

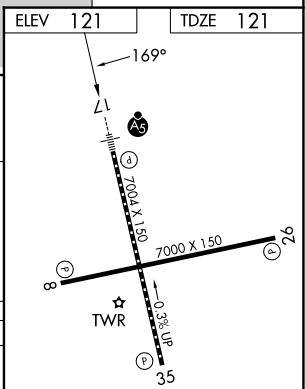
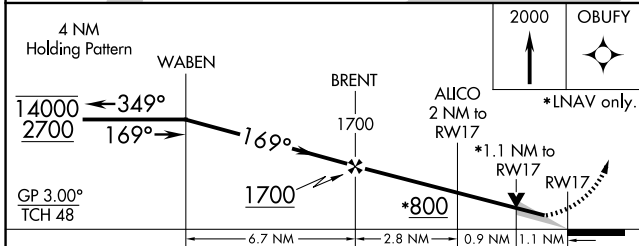
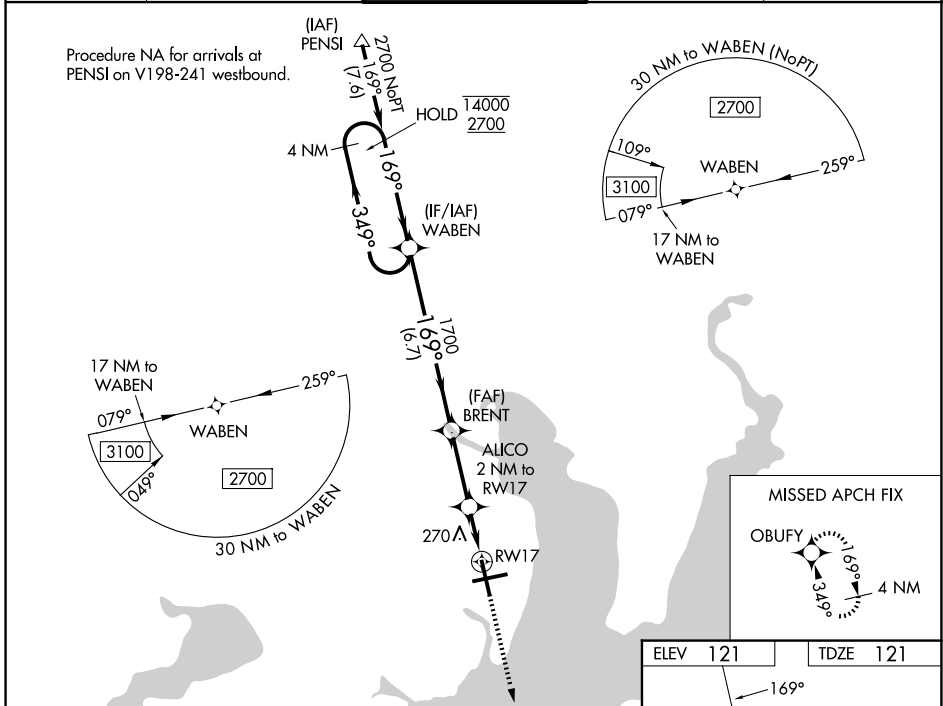
WAAS CH 97319 W17A	APP CRS 169°	Rwy Ldg TDZE Apt Elev	7004 121 121
--	------------------------	-----------------------------	---

RNAV (GPS) RWY 17

PENSACOLA INTL (PNS)

RNP APCH.		MALSR	MISSED APPROACH: Climb to 2000 direct OBUFY and hold.
<p>▼ For uncompensated Baro-VNAV systems, LNAV/VNAV NA below 1°C or above 54°C. CAUTION: Intensive VFR student training in vicinity of airport.</p>			

ATIS 121.25	PENSACOLA APP CON 119.0 269.375	PENSACOLA TOWER ★ 119.9 (CTAF) 257.8	GND CON 121.9 348.6	UNICOM 122.95
-----------------------	---	--	-------------------------------	-------------------------



CATEGORY	A	B	C	D
LPV DA		321/18	200 (200-½)	
LNAV/VNAV DA		542/40	421 (500-¾)	
LNAV MDA	520/24	399 (400-½)	520/35	399 (400-¾)
CIRCLING	580-1 459 (500-1)	680-1 559 (600-1)	860-2 739 (800-2)	860-2 ¼ 739 (800-2 ¼)

REIL Rwy 8, 26 and 35
TDZL/RCLS Rwy 17
HIRL Rwy 8-26 and 17-35

SE-3, 14 MAY 2026 to 11 JUN 2026

SE-3, 14 MAY 2026 to 11 JUN 2026