

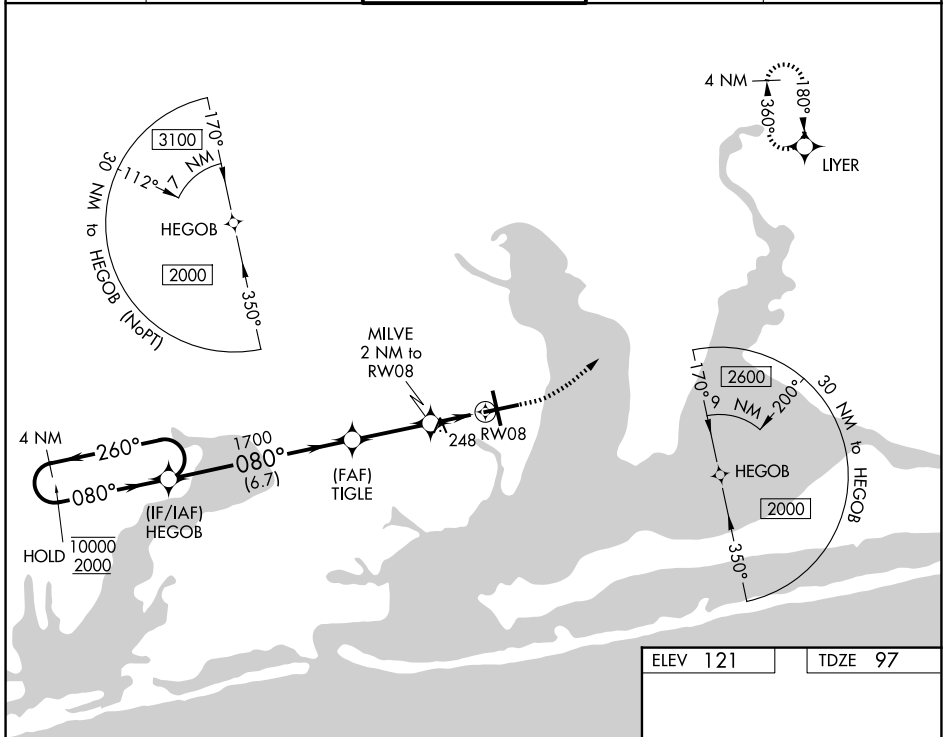
WAAS CH 86219 W08A	APP CRS 080°	Rwy Ldg 7000 TDZE 97 Apt Elev 121
--	------------------------	--

RNAV (GPS) RWY 8

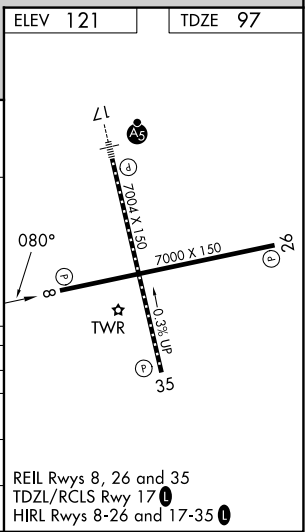
PENSACOLA INTL (PNS)

RNP APCH.	MISSED APPROACH: Climb to 600 then climbing left turn to 2200 direct LIYER and hold.
<p>▼ Rwy 8 helicopter visibility reduction below 3/4 SM NA. For uncompensated Baro-VNAV systems, LNAV/VNAV NA below 1°C or above 54°C.</p> <p>▲ CAUTION: Intensive VFR student training in vicinity of airport.</p>	

ATIS 121.25	PENSACOLA APP CON 119.0 269.375	PENSACOLA TOWER ★ 119.9 (CTAF) 0 257.8	GND CON 121.9 348.6	UNICOM 122.95
-----------------------	---	--	-------------------------------	-------------------------



4 NM Holding Pattern HEGOB		600		2200		LIYER	
10000 ← 260°		TIGLE 1700		MILVE 2 NM to RW08		*LNAV only.	
2000 → 080°		*780		*1.3 NM to RW08		RW08	
GP 3.00° TCH 55		1700		0.7 NM		1.3 NM	
← 6.7 NM		← 2.9 NM		← 0.7 NM		← 1.3 NM	
CATEGORY	A	B	C	D			
LPV DA		347-1	250 (300-1)				
LNAV/VNAV DA		402-1	305 (300-1)				
LNAV MDA	560-1	463 (500-1)	560-1 3/8	463 (500-1 3/8)			
CIRCLING	580-1 459 (500-1)	680-1 559 (600-1)	860-2 739 (800-2)	860-2 1/4 739 (800-2 1/4)			



SE-3, 14 MAY 2026 to 11 JUN 2026

SE-3, 14 MAY 2026 to 11 JUN 2026