

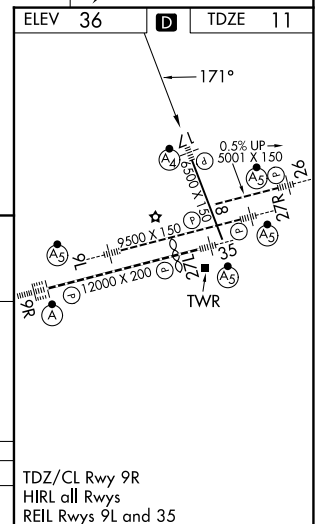
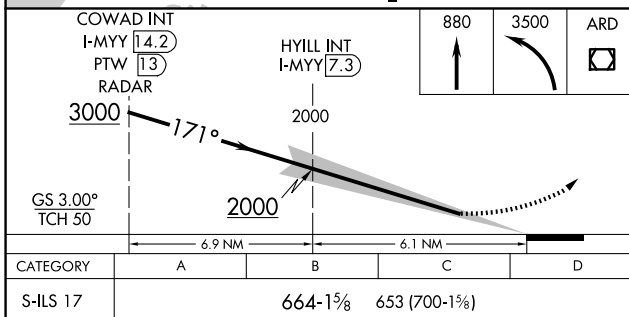
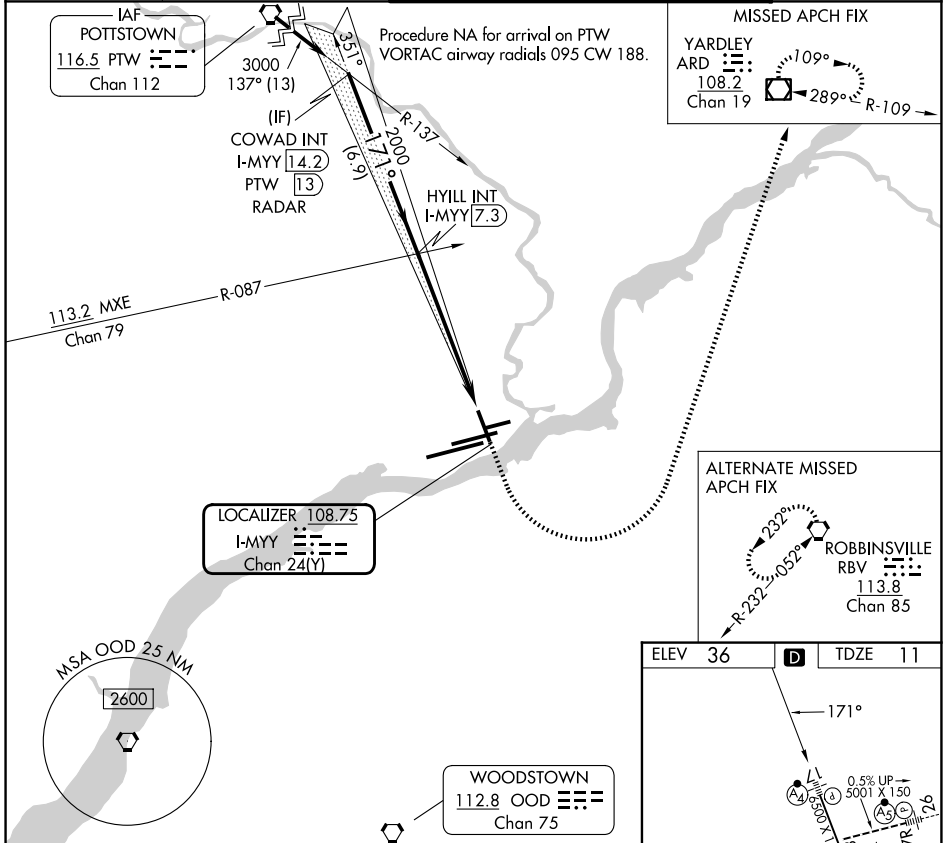
LOC/DME I-MYY 108.75 Chan 24(Y)	APP CRS 171°	Rwy Ldg TDZE 11 Apt Elev 36
--	------------------------	---

ILS V RWY 17 (CONVERGING)

PHILADELPHIA INTL (PHL)

RADAR required.	MALSF	MISSED APPROACH: Climb to 880 then climbing left turn to 3500 direct ARD VOR/DME and hold.
Simultaneous approach authorized. Rwy 17 helicopter visibility reduction below 3/4 SM NA.		

D-ATIS 133.4	PHILADELPHIA APP CON 124.35 319.15	PHILADELPHIA TOWER 118.5 327.05 (08/26, 09L/27R, 17/35) 135.1 327.05 (09R/27L)	GND CON 121.9 348.6
------------------------	--	--	-------------------------------



NE-4, 14 MAY 2026 to 11 JUN 2026

NE-4, 14 MAY 2026 to 11 JUN 2026