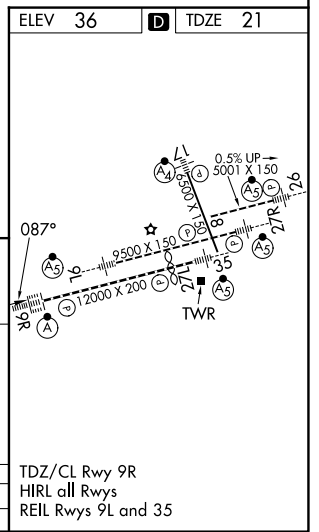
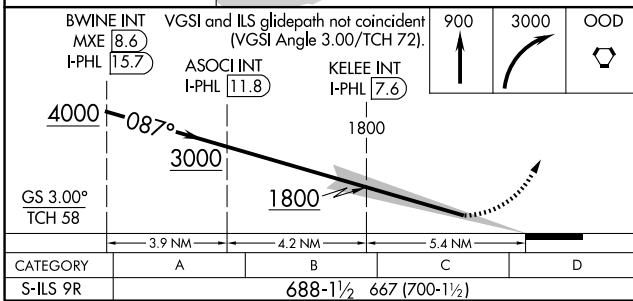
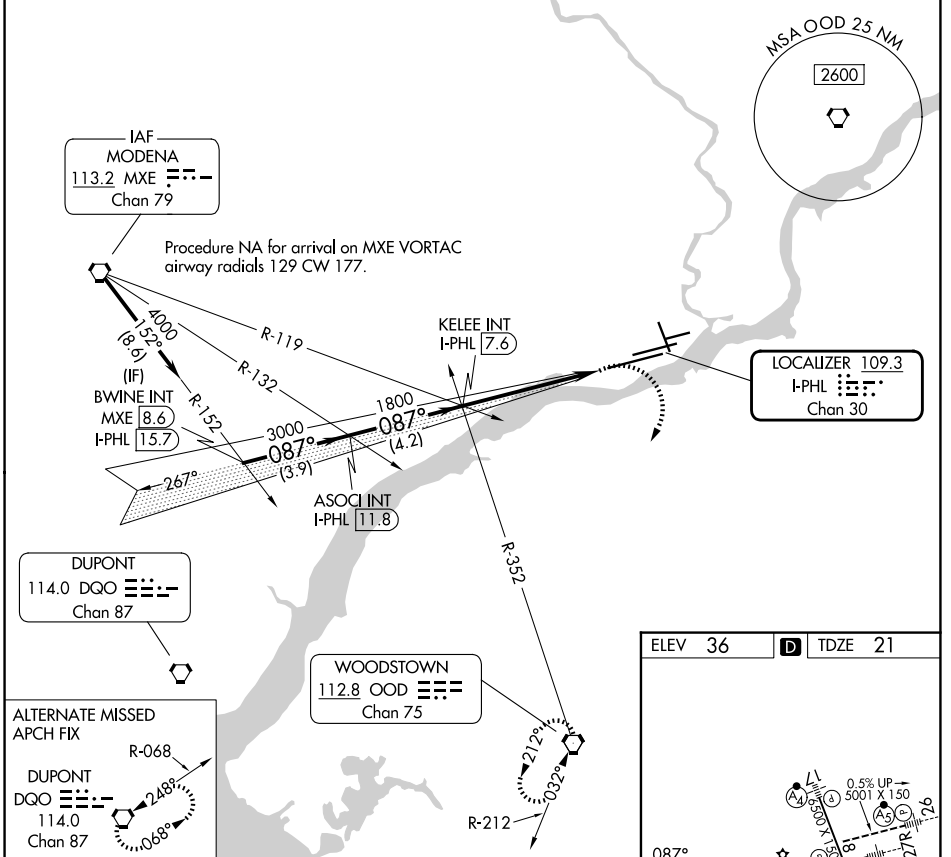


LOC/DME I-PHL <b>109.3</b> Chan <b>30</b>	APP CRS <b>087°</b>	Rwy Ldg <b>12000</b> TDZE <b>21</b> Apt Elev <b>36</b>
---	------------------------	--

# ILS V RWY 9R (CONVERGING)

PHILADELPHIA INTL (PHL)

RADAR required.		ALSIF-2	MISSED APPROACH: Climb to 900 then climbing right turn to 3000 direct OOD VORTAC and hold.
<p>Simultaneous approach authorized. For inop ALS, increase S-ILS 9R all Cats visibility to 1% SM.</p>			
D-ATIS <b>133.4</b>	PHILADELPHIA APP CON <b>124.35 319.15</b>	PHILADELPHIA TOWER <b>118.5 327.05</b> (08/26, 09L/27R, 17/35) <b>135.1 327.05</b> (09R/27L)	GND CON <b>121.9 348.6</b>



NE-4, 14 MAY 2026 to 11 JUN 2026

NE-4, 14 MAY 2026 to 11 JUN 2026