

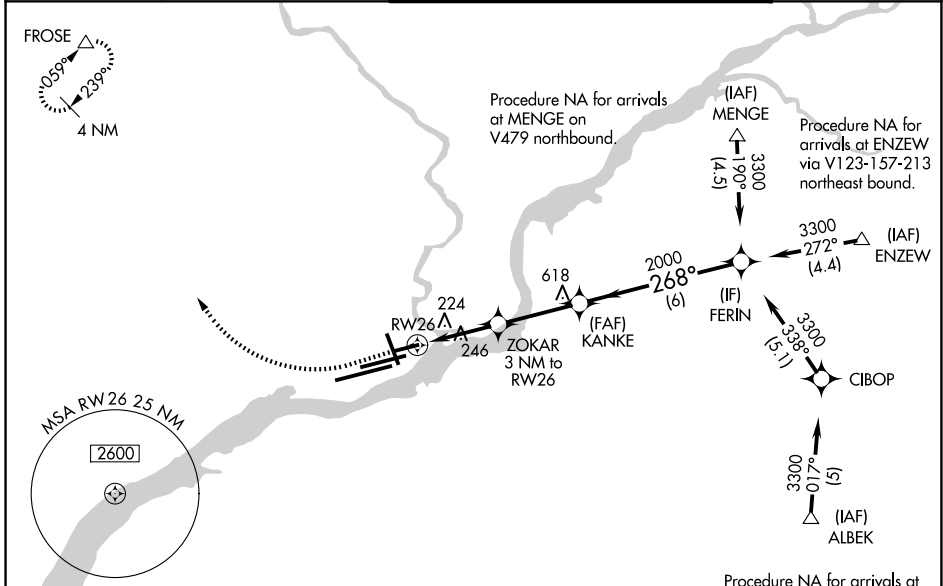
WAAS CH <b>78117</b>	APP CRS <b>268°</b>	Rwy Ldg TDZE <b>36</b>	<b>5001</b>
<b>W26A</b>		Apt Elev	<b>36</b>

# RNAV (GPS) RWY 26

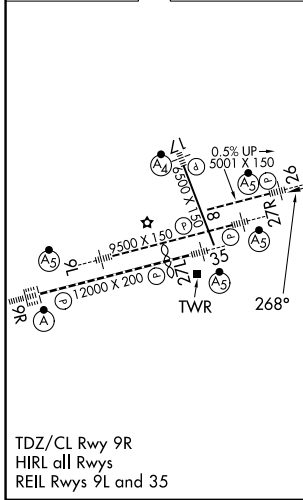
PHILADELPHIA INTL (PHL)

RNP APCH - GPS	MALSR 	MISSED APPROACH: Climb to 800 then climbing right turn to 3000 direct FROSE and hold.
<p><b>⚠</b> For uncompensated Baro-VNAV systems, LNAV/VNAV NA below -12°C or above 54°C. For inop ALS, increase LPV all Cts visibility 3/8 SM, increase LNAV Cts A and B to RVR 5500. Simultaneous approach authorized. LNAV procedure NA during simultaneous operations. Use of FD or AP providing RNAV track guidance required during simultaneous operations. Rwy 26 helicopter visibility reduction below RVR 4000 NA.</p>		

D-ATIS <b>133.4</b>	PHILADELPHIA APP CON <b>124.35 319.15</b>	PHILADELPHIA TOWER <b>118.5 327.05</b> (08/26, 09L/27R, 17/35) <b>135.1 327.05</b> (09R/27L)	GND CON <b>121.9 348.6</b>
------------------------	--	--	-------------------------------



ELEV 36	<b>D</b>	TDZE 36
---------	----------	---------



TDZ/CL Rwy 9R  
HIRL all Rwys  
REIL Rwys 9L and 35

CATEGORY	A	B	C	D
LPV DA		513/60	477 (500-1¼)	
LNAV/VNAV DA		573-1¾	537 (600-1½)	
LNAV MDA	540/40	504 (600-¾)	540/55	504 (600-1)
CIRCLING	540-1 504 (600-1)	600-1 564 (600-1)	620-1½ 584 (600-1½)	720-2¼ 684 (700-2¼)

NE-4, 14 MAY 2026 to 11 JUN 2026

NE-4, 14 MAY 2026 to 11 JUN 2026