

SLATT SIX ARRIVAL

D-ATIS
133.4
PHILADELPHIA APP CON
128.4 273.575

BINGHAMTON
112.2 CFB
Chan 59

HANCOCK
116.8 HNK
Chan 115

DELANCEY
112.1 DNY
Chan 58

HUGUENOT
116.1 HHO
Chan 108

WILKES-BARRE
111.6 LVZ
Chan 53

ALLENTOWN
117.5 FJC
Chan 122

EAST TEXAS
110.2 ETX
Chan 39

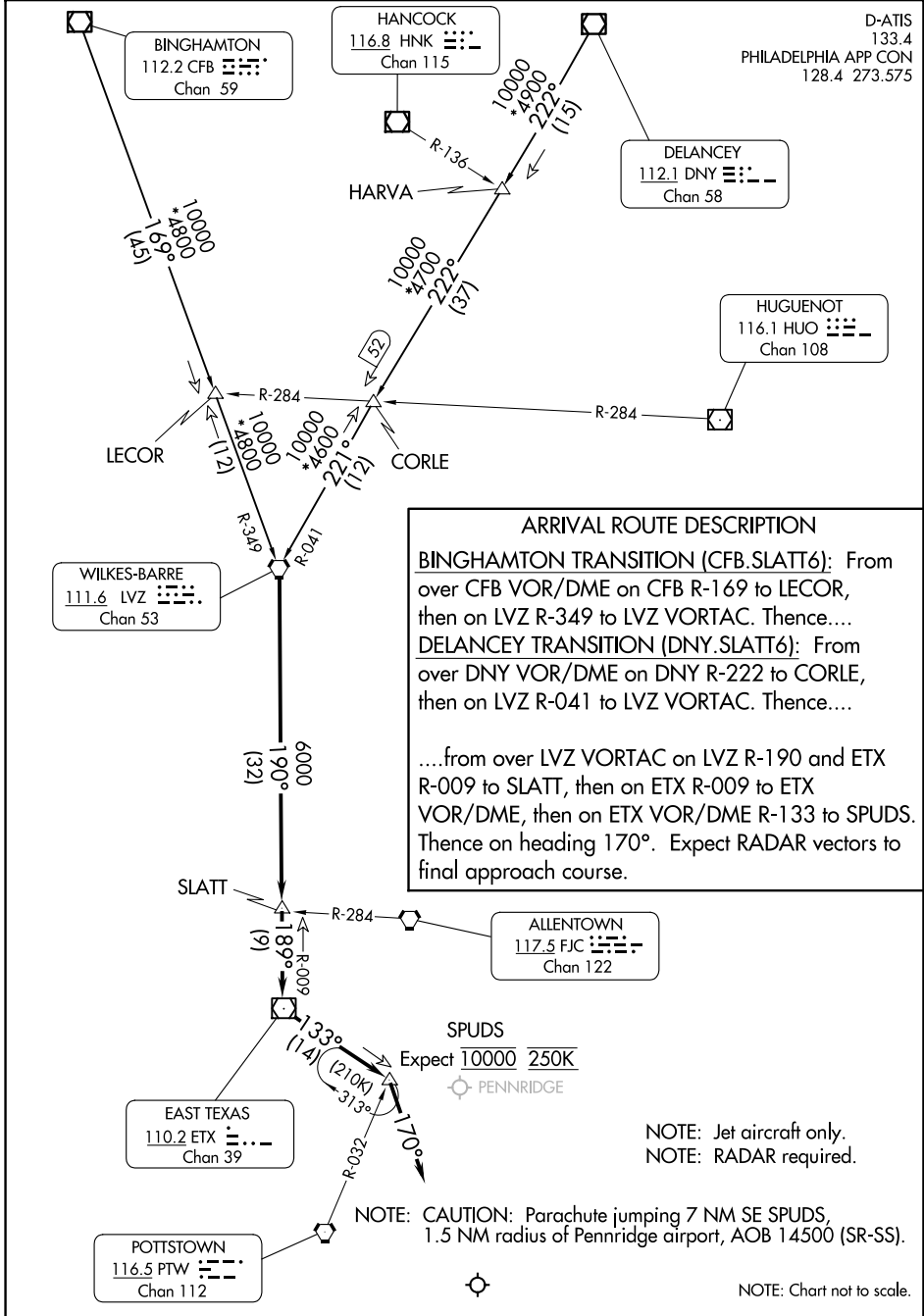
POTTSTOWN
116.5 PTW
Chan 112

ARRIVAL ROUTE DESCRIPTION

BINGHAMTON TRANSITION (CFB.SLATT6): From over CFB VOR/DME on CFB R-169 to LECOR, then on LVZ R-349 to LVZ VORTAC. Thence...

DELANCEY TRANSITION (DNY.SLATT6): From over DNY VOR/DME on DNY R-222 to CORLE, then on LVZ R-041 to LVZ VORTAC. Thence...

...from over LVZ VORTAC on LVZ R-190 and ETX R-009 to SLATT, then on ETX R-009 to ETX VOR/DME, then on ETX VOR/DME R-133 to SPUDS. Thence on heading 170°. Expect RADAR vectors to final approach course.



NE-4, 14 MAY 2026 to 11 JUN 2026

NE-4, 14 MAY 2026 to 11 JUN 2026

SLATT SIX ARRIVAL

NOTE: Jet aircraft only.
NOTE: RADAR required.

NOTE: CAUTION: Parachute jumping 7 NM SE SPUDS,
1.5 NM radius of Penridge airport, AOB 14500 (SR-SS).

NOTE: Chart not to scale.