

# HI-ILS or LOC/DME RWY 3R

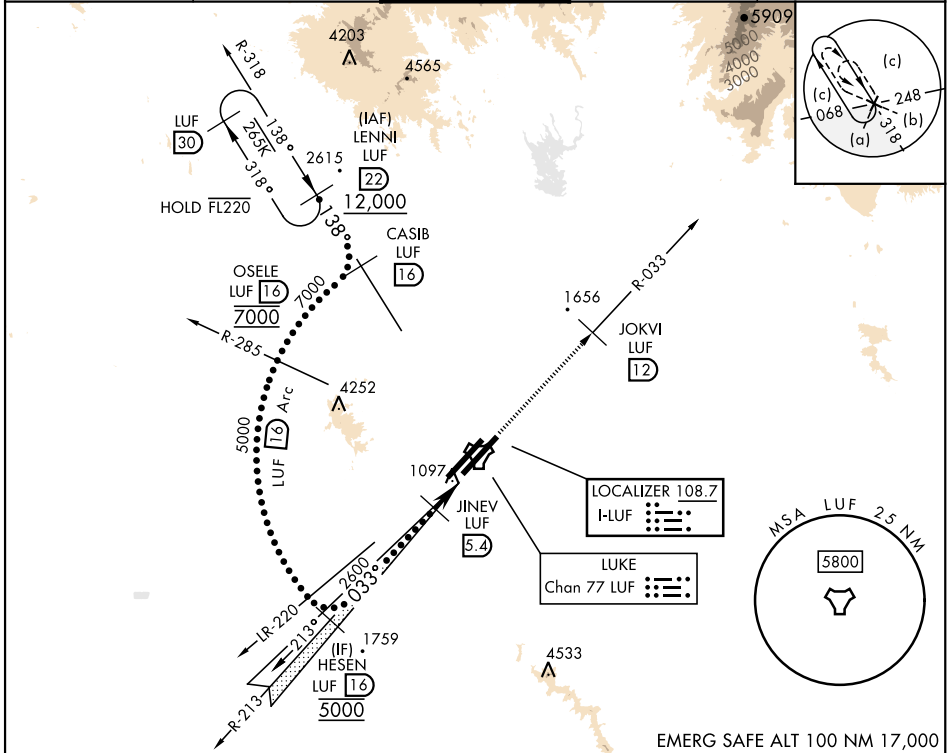
LOC I-LUF <b>108.7</b>	APCH CRS <b>033°</b>	Rwy ldg <b>9912</b> TDZE <b>1074</b> Arprt Elev <b>1084</b>	[USAF]	LUKE AFB (KLUF)
---------------------------	-------------------------	--	--------	-----------------

\* When ALS inop, increase vis to 3/4 mile.  
 \*\* When ALS inop, increase vis 1 3/8 miles.

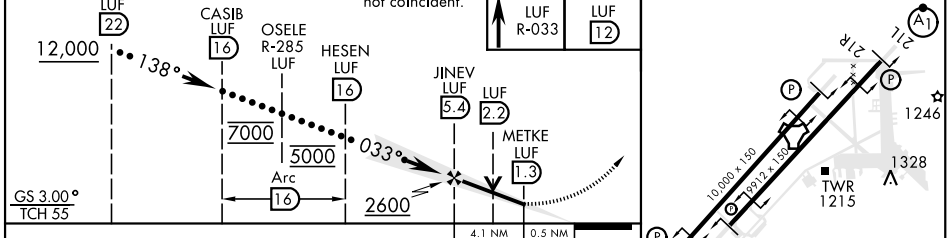
ALSF-1

MISSED APPROACH: Climbing to 4000, intercept LUF TACAN R-033 to 12 DME (JOKVI). Contact LUKE APP CON.

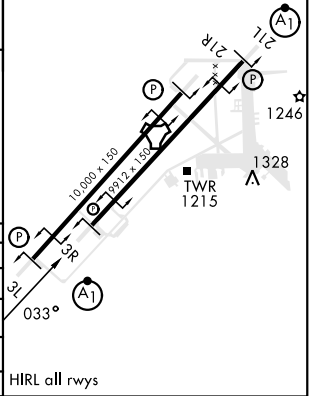
ATIS ★ <b>134.925 269.85</b>	APP CON★ <b>118.15 363.125</b>	TOWER★ <b>119.1 379.9</b>	GND CON★ <b>133.175 335.8</b>	CLNC DEL★ <b>126.25 273.475</b>
---------------------------------	-----------------------------------	------------------------------	----------------------------------	------------------------------------



EMERG SAFE ALT 100 NM 17,000



CATEGORY	C	D	E
S-ILS 3R *	1274-1/2	200	(200-1/2)
S-LOC/DME 3R **	1560-1	486	(500-1)
SIDESTEP 3L	1560-2 1/2	483	(500-2 1/2)
CIRCLING	NOT AUTHORIZED		



# HI-ILS or LOC/DME RWY 3R

SW-4, 14 MAY 2026 to 11 JUN 2026

SW-4, 14 MAY 2026 to 11 JUN 2026

