

BLYTE FIVE ARRIVAL

AL-322 (FAA)

PHOENIX, ARIZONA

SW-4, 14 MAY 2026 to 11 JUN 2026

ARRIVAL ROUTE DESCRIPTION

BLYTE TRANSITION (BLH.BLH5): From over BLH VORTAC on BLH R-082 to SALOM, then on GBN R-285 and IWA R-256 to ARLIN. Thence

PHOENIX SKY HARBOR INTL: Rwys 7L/R or 8: From over ARLIN, expect vectors to final approach course; Rwys 25L/R or 26: From over ARLIN, on IWA R-256 to TUKEE. Expect vectors to final approach course prior to TUKEE.
SATELLITE AIRPORTS: Expect vectors after passing SALOM.

LOST COMMUNICATIONS: After ARLIN, on IWA R-256 and PXR R-143 to PXR VORTAC.

SALOM

VERTICAL NAVIGATION PLANNING INFORMATION
Turbojet expect 17000
Turbojet landing KPHX expect vectors after SALOM.

BLYTE
117.4 BLH
Chan 121

BUCKEYE
110.6 BKK
Chan 43

PHOENIX
115.6 PXR
Chan 103

BARD
116.8 BZA
Chan 115

NOTE: BLYTHE ARRIVAL for aircraft FL 230 or below.
NOTE: RADAR required

VERTICAL NAVIGATION PLANNING INFORMATION
Landing WEST:
Turbojets: Expect 14000
Landing EAST:
Turbojets: Expect 12000

PAYNIT
Turbojets: 250K

- PHOENIX APP CON 124.1 256.9
- CHD ATIS 128.325
- FFZ ATIS 118.25
- DVT ATIS 126.5
- IWA ATIS 133.5 270.275
- PHX D-ATIS 127.575
- SDL ATIS 118.6
- PHOENIX TOWER 118.7 278.8 (Rwy 8-26)
- 120.9 254.3 (Rwy 7L-25R, 7R-25L)
- PHX GND CON 119.75 269.2



PHOENIX-DEER VALLEY

SCOTTSDALE

FALCON FLD

PHOENIX-SKY HARBOR INTL

STELLAR AIRPARK

ARLIN

AMBR

ALEYS

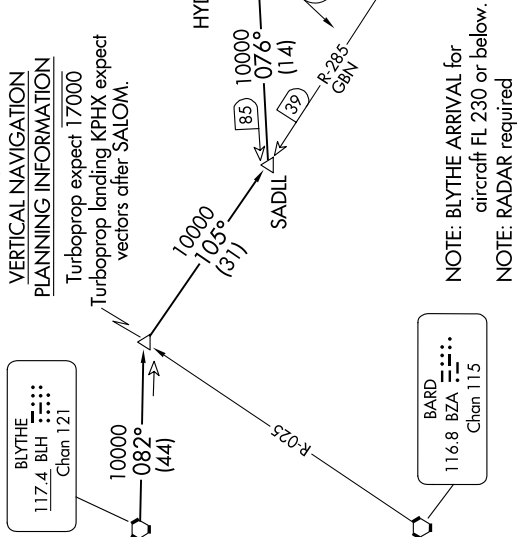
TUKEE

CHANDLER MUNI

MESA GATEWAY

WILLIE IWA

GILA BEND



NOTE: Chart not to scale.

SW-4, 14 MAY 2026 to 11 JUN 2026

BLYTE FIVE ARRIVAL

PHOENIX, ARIZONA