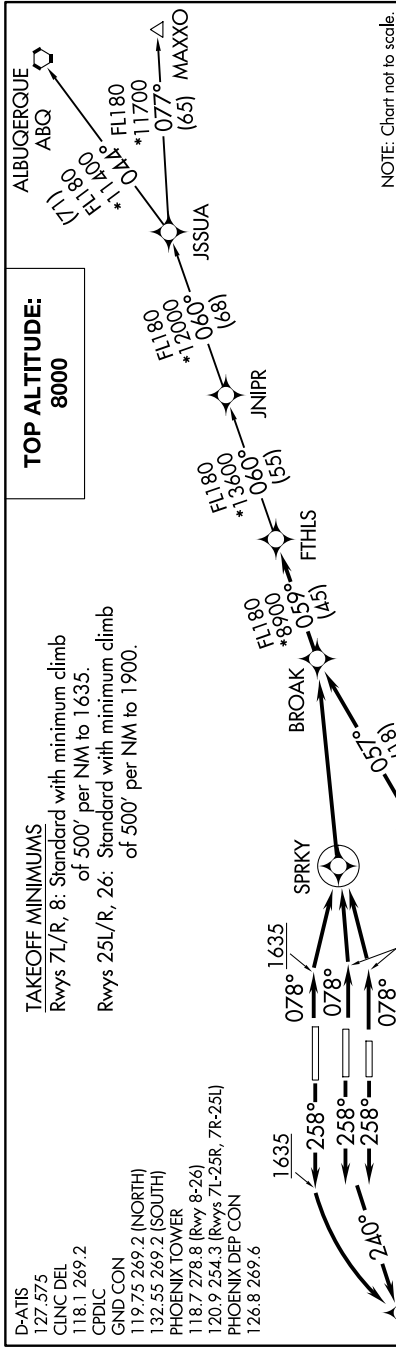


SW-4, 14 MAY 2026 to 11 JUN 2026



**TAKEOFF MINIMUMS**  
 Rwy 7L/R, 8: Standard with minimum climb of 500' per NM to 1635.  
 Rwy 25L/R, 26: Standard with minimum climb of 500' per NM to 1900.

- D-ATIS 127.575
- CINC DEL 118.1269.2
- CPDIC 119.75
- GND CON 119.75 269.2 (NORTH)
- 132.55 269.2 (SOUTH)
- PHOENIX TOWER 118.7 278.8 (Rwy 8-26)
- 120.9 254.3 (Rwys 7L-25R, 7R-25L)
- PHOENIX DEP CON 126.8 269.6

**DEPARTURE ROUTE DESCRIPTION**

▼ TAKEOFF RUNWAYS 7L/R, 8: Climb heading 078° to 1635, then direct to SPRKY, then left turn direct BROAK. Thence. . . .

TAKEOFF RUNWAYS 25L/R: Climb heading 258° to intercept course 240° to JUTAK, then on track 151° to WETAL, then on track 123° to RIICH, then on track 070° to PYPPE, then on track 050° to BARLL, then on track 057° to BROAK. Thence. . . .

TAKEOFF RUNWAY 26: Climb heading 258° to 1635, then left turn direct JUTAK, then on track 151° to WETAL, then on track 123° to RIICH, then on track 070° to PYPPE, then on track 050° to BARLL, then on track 057° to BROAK. Thence. . . .

. . . on track 059° to FTHLS, then on (transition). Maintain 8000, expect higher altitude 3 minutes after departure.

ALBUJERQUE TRANSITION (BROAK1.ABQ)

JNIPR TRANSITION (BROAK1.JNIPR)

MAXXO TRANSITION (BROAK1.MAXXO)

**NOTE: RNAV 1.**

NOTE: Turbojets and turboprops only.

NOTE: RADAR required.

NOTE: DME/DME/IRU or GPS required.

NOTE: ABQ transition ATC assigned only.

NOTE: Aircraft filing over ACH, LBL, ONM, CNX, PNH, MMB, TCC, IRW and TXO file BROAK DEPARTURE.

NOTE: Aircraft filing over ABQ, CIM, FTI, and GCK file FORPE DEPARTURE.

NOTE: Aircraft filing over DEN, RSK, ALS, and points north of ALS file MRBIL DEPARTURE.

NOTE: For non-GPS equipped aircraft, PXR and TFD DMEs must be operational.

SW-4, 14 MAY 2026 to 11 JUN 2026