

BUNTR THREE ARRIVAL

PHOENIX APP CON
128.65 353.9
PHOENIX TOWER
118.7 278.8 (Rwy 8-26)
120.9 254.3 (Rwy 7L-25R, 7R-25L)
GND CON
119.75 269.2
D-ATIS
127.575

WINSLOW
112.6 INW
Chan 73

GALLUP
115.1 GUP
Chan 98

ZUNI
113.4 ZUN
Chan 81

ST JOHNS
112.3 SJN
Chan 70

DRAKE
114.1 DRK
Chan 88

PHOENIX
115.6 PXR
Chan 103

VERTICAL NAVIGATION
PLANNING INFORMATION

Expect FL360

VERTICAL NAVIGATION
PLANNING INFORMATION

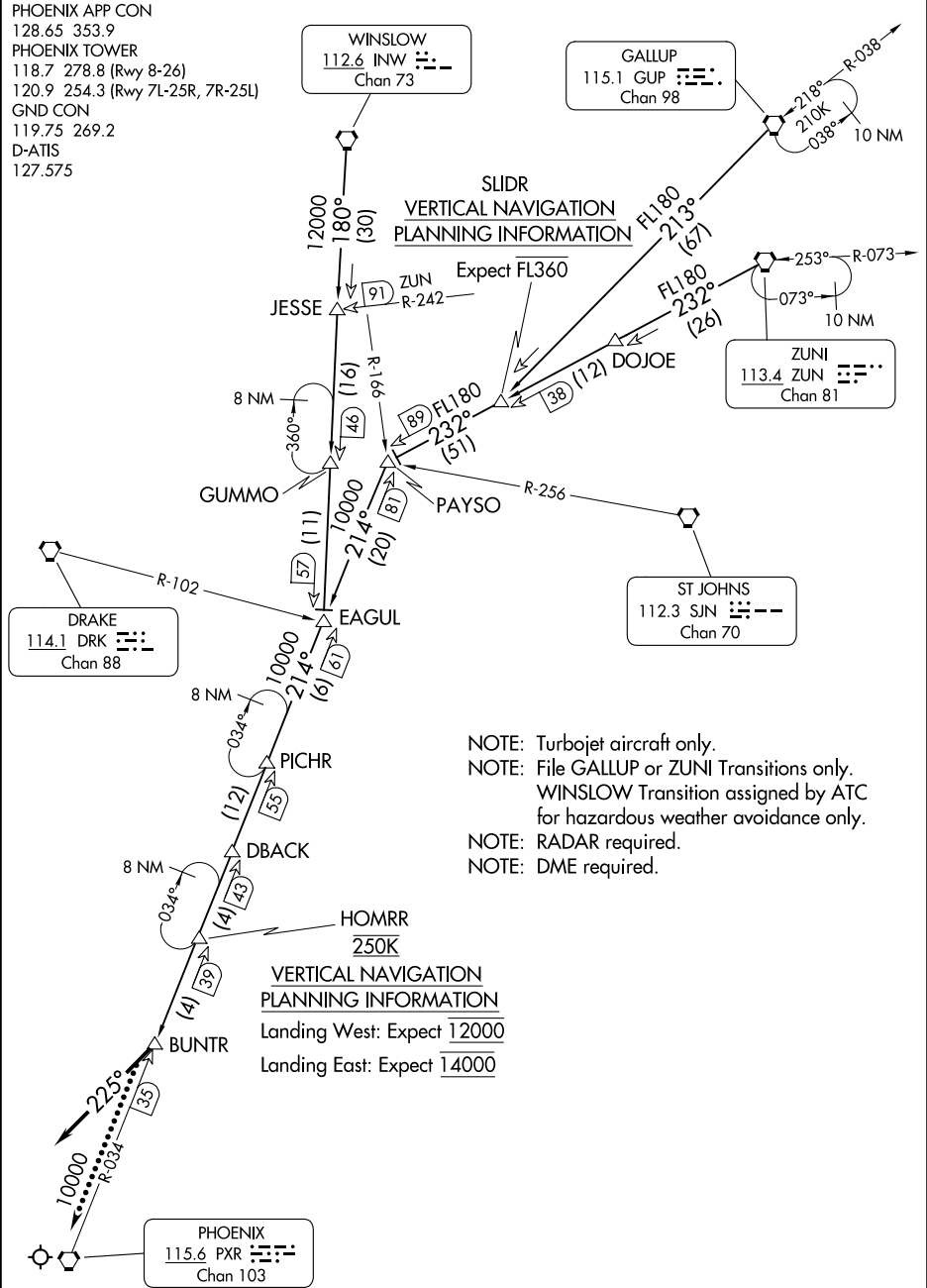
Landing West: Expect 12000

Landing East: Expect 14000

- NOTE: Turbojet aircraft only.
- NOTE: File GALLUP or ZUNI Transitions only.
- WINSLOW Transition assigned by ATC for hazardous weather avoidance only.
- NOTE: RADAR required.
- NOTE: DME required.

SW-4, 14 MAY 2026 to 11 JUN 2026

SW-4, 14 MAY 2026 to 11 JUN 2026



NOTE: Chart not to scale.

(CONTINUED ON FOLLOWING PAGE)

ARRIVAL ROUTE DESCRIPTION

GALLUP TRANSITION (GUP.BUNTR3): From over GUP VORTAC on GUP R-213 to SLIDR then on ZUN R-232 to PAYSO, then on PXR R-034 to BUNTR. Thence. . . .

WINSLOW TRANSITION (INW.BUNTR3): From over INW VORTAC on INW R-180 to EAGUL, then on PXR R-034 to BUNTR. Thence. . . .

ZUNI TRANSITION (ZUN.BUNTR3): From over ZUN VORTAC via ZUN R-232 to PAYSO, then via PXR R-034 to BUNTR. Thence. . . .

. . . . From BUNTR, fly heading 225°. Expect vectors to final approach course.

LOST COMMUNICATIONS: After BUNTR proceed direct PXR VORTAC.

SW-4, 14 MAY 2026 to 11 JUN 2026

SW-4, 14 MAY 2026 to 11 JUN 2026