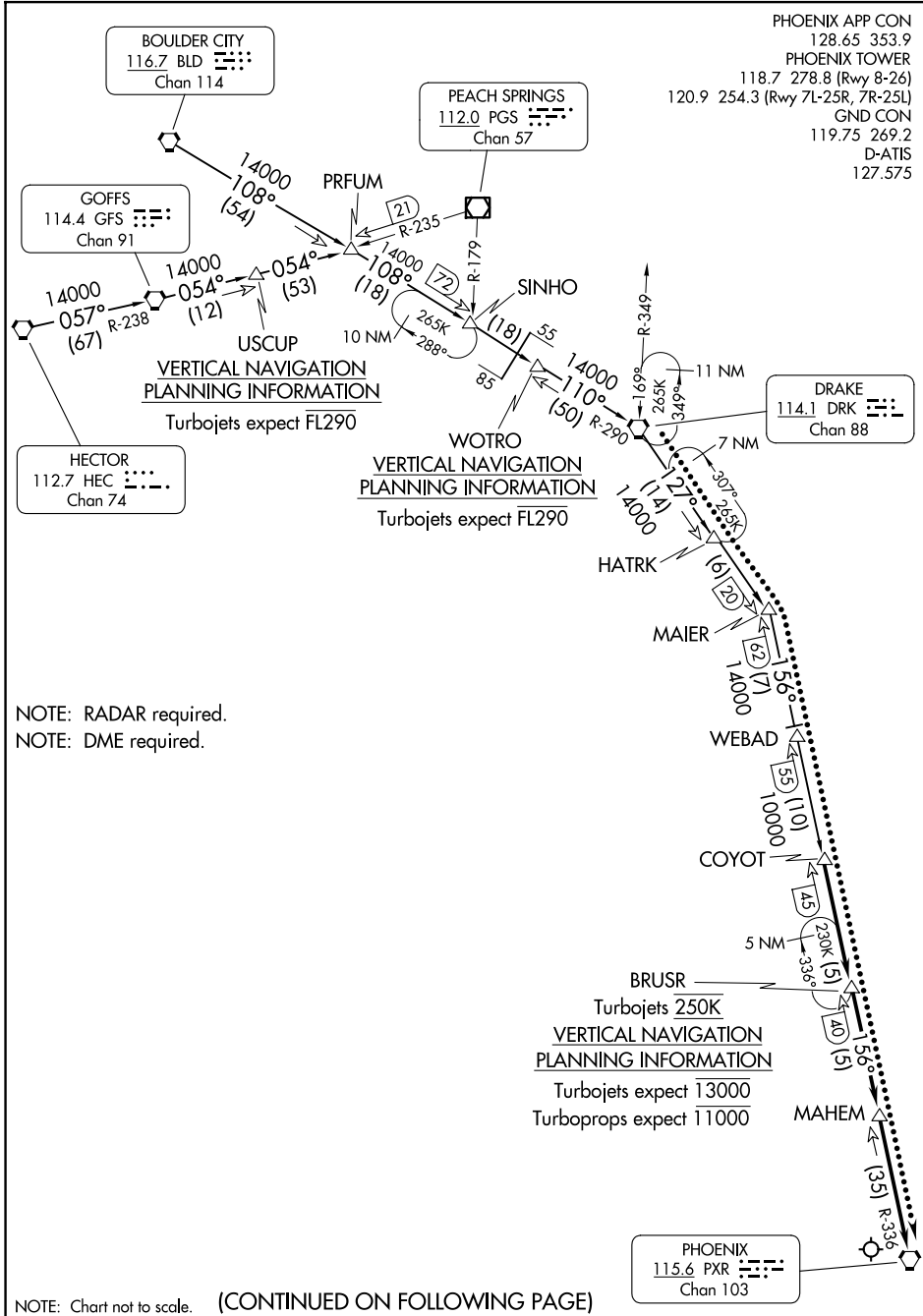


(COYOT.COYOT5) 23334
COYOT FIVE ARRIVAL

AL-322 (FAA)

PHOENIX SKY HARBOR INTL (PHX)
 PHOENIX, ARIZONA

PHOENIX APP CON 128.65 353.9
 PHOENIX TOWER 118.7 278.8 (Rwy 8-26)
 120.9 254.3 (Rwy 7L-25R, 7R-25L)
 GND CON 119.75 269.2
 D-ATIS 127.575



SW-4, 14 MAY 2026 to 11 JUN 2026

SW-4, 14 MAY 2026 to 11 JUN 2026

NOTE: Chart not to scale. (CONTINUED ON FOLLOWING PAGE)

COYOT FIVE ARRIVAL
 (COYOT.COYOT5) 16JUL20

PHOENIX, ARIZONA
 PHOENIX SKY HARBOR INTL (PHX)

ARRIVAL ROUTE DESCRIPTION

BOULDER CITY TRANSITION (BLD.COYOT5): From over BLD VORTAC on BLD R-108 and DRK R-290 to DRK VORTAC, then on DRK R-127 and PXR R-336 to COYOT. Thence. . . .

DRAKE TRANSITION (DRK.COYOT5): From over DRK VORTAC on DRK R-127 and PXR R-336 to COYOT. Thence. . . .

HECTOR TRANSITION (HEC.COYOT5): From over HEC VORTAC on HEC R-057 and GFS R-238 to GFS VORTAC, then on GFS R-054 and PGS R-235 to PRFUM, then on BLD R-108 and DRK R-290 to DRK VORTAC, then on DRK R-127 and PXR R-336 to COYOT. Thence. . . .

. . . .From COYOT on PXR R-336 to BRUSR, then on PXR R-336 to MAHEM, then on PXR R-336 to PXR VORTAC. After BRUSR expect RADAR vectors to final approach course.

LOST COMMUNICATIONS

After DRK VORTAC proceed direct MAIER, then direct PXR VORTAC.

SW-4, 14 MAY 2026 to 11 JUN 2026

SW-4, 14 MAY 2026 to 11 JUN 2026