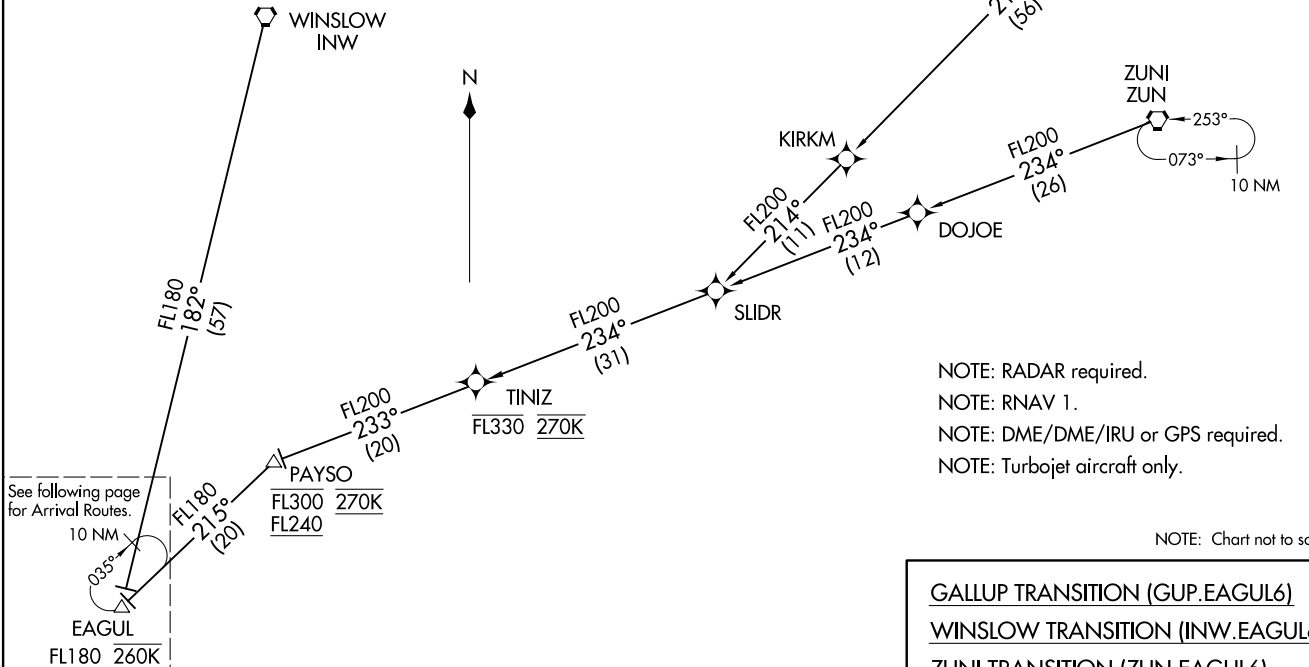


EAGUL SIX ARRIVAL (RNAV) Transition Routes
(EAGUL.EAGUL6) 18SEP14

PHOENIX APP CON
128.65 353.9
PHOENIX TOWER
118.7 278.8 (Rwy 8-26)
120.9 254.3 (Rwy 7L-25R, 7R-25L)
GND CON
119.75 269.2 (North)
132.55 269.2 (South)
D-ATIS
127.575

NOTE: GALLUP and ZUNI TRANSITIONS: For non-GPS equipped aircraft INW DME must be operational.
NOTE: LANDING EAST: For non-GPS equipped aircraft PXR and IWA DMEs must be operational.
NOTE: File GALLUP or ZUNI TRANSITIONS only. WINSLOW TRANSITION assigned by ATC for hazardous weather avoidance only.



See following page for Arrival Routes.

NOTE: RADAR required.
NOTE: RNAV 1.
NOTE: DME/DME/IRU or GPS required.
NOTE: Turbojet aircraft only.

NOTE: Chart not to scale.

GALLUP TRANSITION (GUP.EAGUL6)
WINSLOW TRANSITION (INW.EAGUL6)
ZUNI TRANSITION (ZUN.EAGUL6)

(CONTINUED ON FOLLOWING PAGE)

PHOENIX SKY HARBOR INTL (PHX)
PHOENIX, ARIZONA

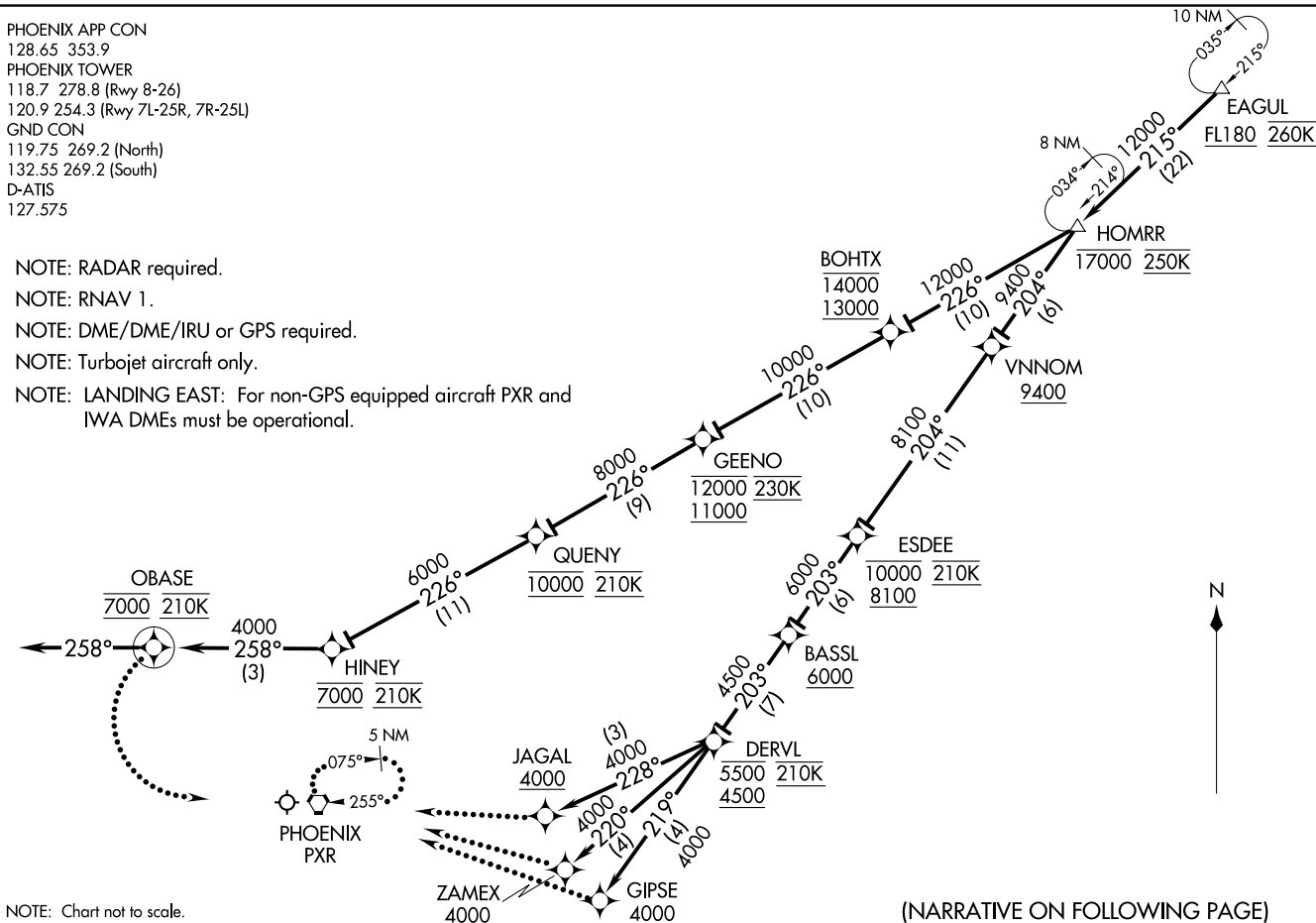
(EAGUL.EAGUL6) 17117
EAGUL SIX ARRIVAL (RNAV) Transition Routes

AL-322 (FAA)

PHOENIX SKY HARBOR INTL (PHX)
PHOENIX, ARIZONA

PHOENIX APP CON
 128.65 353.9
 PHOENIX TOWER
 118.7 278.8 (Rwy 8-26)
 120.9 254.3 (Rwy 7L-25R, 7R-25L)
 GND CON
 119.75 269.2 (North)
 132.55 269.2 (South)
 D-ATIS
 127.575

- NOTE: RADAR required.
- NOTE: RNAV 1.
- NOTE: DME/DME/IRU or GPS required.
- NOTE: Turbojet aircraft only.
- NOTE: LANDING EAST: For non-GPS equipped aircraft PXR and IWA DMEs must be operational.



NOTE: Chart not to scale.

(NARRATIVE ON FOLLOWING PAGE)

PHOENIX SKY HARBOR INTL (PHX)
 PHOENIX, ARIZONA
 Arrival Routes
 (EAGUL, EAGUL6) 18SEP14
EAGUL SIX ARRIVAL (RNAV)

PHOENIX SKY HARBOR INTL (PHX)
 PHOENIX, ARIZONA
 Arrival Routes
 AL-322 (FAA)
EAGUL SIX ARRIVAL (RNAV) 17117
 (EAGUL, EAGUL6)

ARRIVAL ROUTE DESCRIPTION

From EAGUL on track 215° to cross HOMRR at or below 17000 at 250K.

LANDING RUNWAYS 7L, 7R, 8: From HOMRR on track 226° to cross BOHTX at/above 13000 and at/below 14000, then on track 226° to cross GEENO at/above 11000 and at/below 12000 and at 230K, then on track 226° to cross QUENY at 10000 and at 210K, then on track 226° to cross HINEY at 7000 and at 210K, then on track 258° to cross OBASE at 7000 and at 210K, then on track 258°. Expect RADAR vectors to final approach course.

LANDING RUNWAY 25L: From HOMRR on track 204° to cross VNNOM at/above 9400, then on track 204° to cross ESDEE at/above 8100 and at/below 10000 and at 210K, then on track 203° to cross BASSL at/above 6000, then on track 203° to cross DERVL at/above 4500 and at/below 5500 and at 210K, then on track 219° to cross GIPSE at/above 4000. Expect ILS or LOC RWY 25L approach or RADAR vectors to final approach course.

LANDING RUNWAY 25R: From HOMRR on track 204° to cross VNNOM at/above 9400, then on track 204° to cross ESDEE at/above 8100 and at/below 10000 and at 210K, then on track 203° to cross BASSL at/above 6000, then on track 203° to cross DERVL at/above 4500 and at/below 5500 and at 210K, then on track 220° to cross ZAMEX at/above 4000. Expect RNAV (GPS) Y RWY 25R approach or RADAR vectors to final approach course.

LANDING RUNWAY 26: From HOMRR on track 204° to cross VNNOM at/above 9400, then on track 204° to cross ESDEE at/above 8100 and at/below 10000 and at 210K, then on track 203° to cross BASSL at/above 6000, then on track 203° to cross DERVL at/above 4500 and at/below 5500 at 210K, then on track 228° to cross JAGAL at/above 4000. Expect ILS or LOC RWY 26 approach or RADAR vectors to final approach course.

LOST COMMUNICATIONS

LANDING RUNWAY 7L: After OBASE turn left, intercept and execute RWY 7L ILS approach. If unable, proceed direct PXR VORTAC and hold, maintain 9000.

LANDING RUNWAY 7R: After OBASE turn left, intercept and execute RWY 7R ILS approach. If unable, proceed direct PXR VORTAC and hold, maintain 9000.

LANDING RUNWAY 8: After OBASE turn left, intercept and execute RWY 8 ILS approach. If unable, proceed direct PXR VORTAC and hold, maintain 9000.

LANDING RUNWAY 25L: At GIPSE, intercept and execute RWY 25L ILS approach. If unable, proceed direct PXR VORTAC and hold, maintain 9000.

LANDING RUNWAY 25R: At ZAMEX, intercept and execute RWY 25R RNAV (GPS) approach. If unable, proceed direct PXR VORTAC and hold, maintain 9000.

LANDING RUNWAY 26: At JAGAL, intercept and execute RWY 26 ILS approach. If unable, proceed direct PXR VORTAC and hold, maintain 9000.

SW-4, 14 MAY 2026 to 11 JUN 2026

SW-4, 14 MAY 2026 to 11 JUN 2026