

LOC/DME I-PHX 111.5 Chan 52	APP CRS 078°	Rwy Ldg 10300 TDZE 1116 Apt Elev 1135
---	------------------------	--

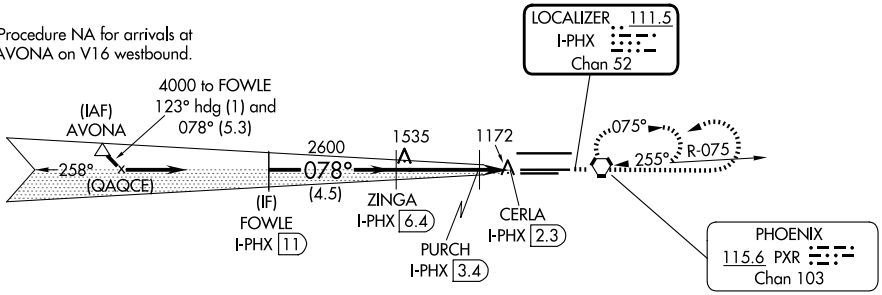
ILS or LOC/DME RWY 7L

PHOENIX SKY HARBOR INTL (PHX)

<p>▽ For inoperative ALS, increase S-LOC 7L Cats C/D visibility to RVR 5500.</p> <p>▲</p>	<p>MALSR</p>	<p>MISSED APPROACH: Climb to 5000 then left turn direct PXR VORTAC and hold.</p>	
			<p>D-ATIS 127.575</p>

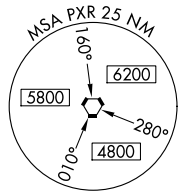
DME REQUIRED

Procedure NA for arrivals at AVONA on V16 westbound.



SW-4, 14 MAY 2026 to 11 JUN 2026

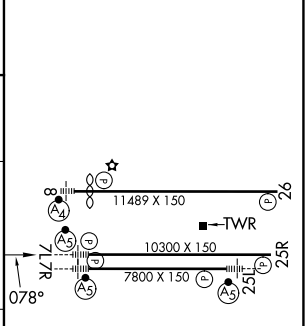
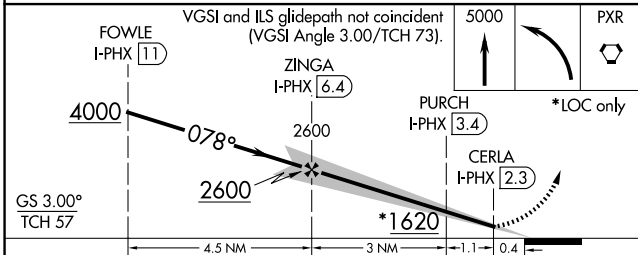
SW-4, 14 MAY 2026 to 11 JUN 2026



ALTERNATE MISSED APCH FIX

WILLIE
IWA ---
113.3
Chan 80

ELEV 1135	D	TDZE 1116
-----------	----------	-----------



CATEGORY	A	B	C	D
S-ILS 7L	1326/24		210 (200-1/2)	
S-LOC 7L	1460/24	344 (400-1/2)	1460/30	344 (400-5/8)
CIRCLING	1740-1	605 (700-1)	2040-2 3/4 905 (1000-2 3/4)	2560-3 1425 (1500-3)

HIRL Rwy 8-26, 7L-25R and 7R-25L
REIL Rwy 26