

WAAS CH 82211 W25B	APP CRS 258°	Rwy Ldg TDZE Apt Elev	7800 1126 1135
--	------------------------	-----------------------------	---

RNAV (GPS) Y RWY 25L

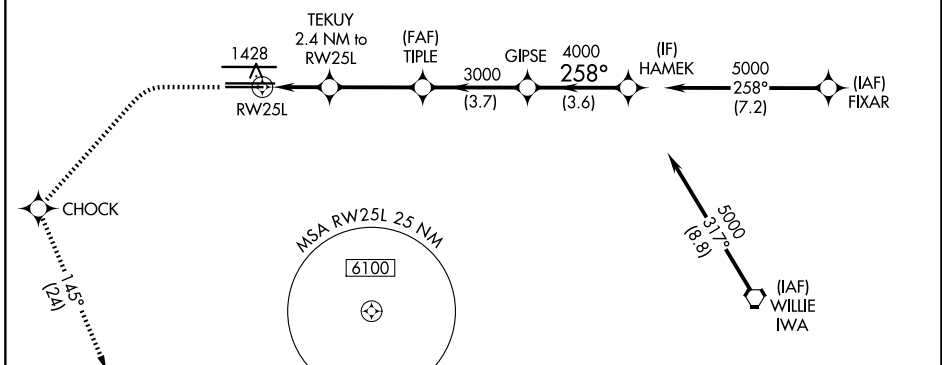
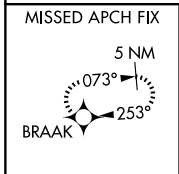
PHOENIX SKY HARBOR INTL (PHX)

RNP APCH-GPS.

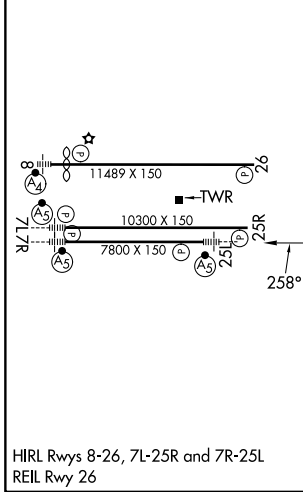
Simultaneous approach authorized. LNAV procedure NA during simultaneous operations. Use of FD or AP required during simultaneous operations. For uncompensated Baro-VNAV systems, procedure NA below 2°C or above 54°C. For inop ALS, increase visibility LPV all Cats to 1 SM, LNAV/VNAV all Cats to 1 3/8 SM and LNAV Cats C/D 1 3/8 SM.

MALSR MISSED APPROACH: Climb to 1900 then climbing left turn to 5000 direct CHOCK and on track 145° to BRAAK and hold.

D-ATIS 127.575	PHOENIX APP CON 128.65 353.9	PHOENIX TOWER 118.7 278.8 (8-26) 120.9 254.3 (7L-25R, 7R-25L)	GND CON 119.75 269.2 (N) 132.55 269.2 (S)
--------------------------	--	---	---



ELEV 1135	D	TDZE 1126
-----------	----------	-----------



1900	5000	CHOCK	tr 145°	BRAAK	VGSI and RNAV glidepath not coincident (VGSI Angle 3.00/TCH 66).
		TEKUY 2.4 NM to RWY 25L	TIPLE 3000	GIPSE 4000	HAMEK 5000
		1.7 NM to RWY 25L	3000	258°	5000
		1940	3000	4000	GP 3.00° TCH 49
		1.7 NM	0.7 NM	3.3 NM	3.7 NM
CATEGORY	A	B	C	D	
LPV DA	1449-1/2 323 (400-1/2)				
LNAV/VNAV DA	1589-1 463 (500-1)			1674-1 3/8 548 (600-1 3/8)	
LNAV MDA	1740-1/2 614 (700-1/2)		1740-1 3/8 614 (700-1 3/8)		
CIRCLING	1740-1 605 (700-1)		2040-2 3/4 905 (1000-2 3/4)		2340-3 1205 (1300-3)

SW-4, 14 MAY 2026 to 11 JUN 2026

SW-4, 14 MAY 2026 to 11 JUN 2026