

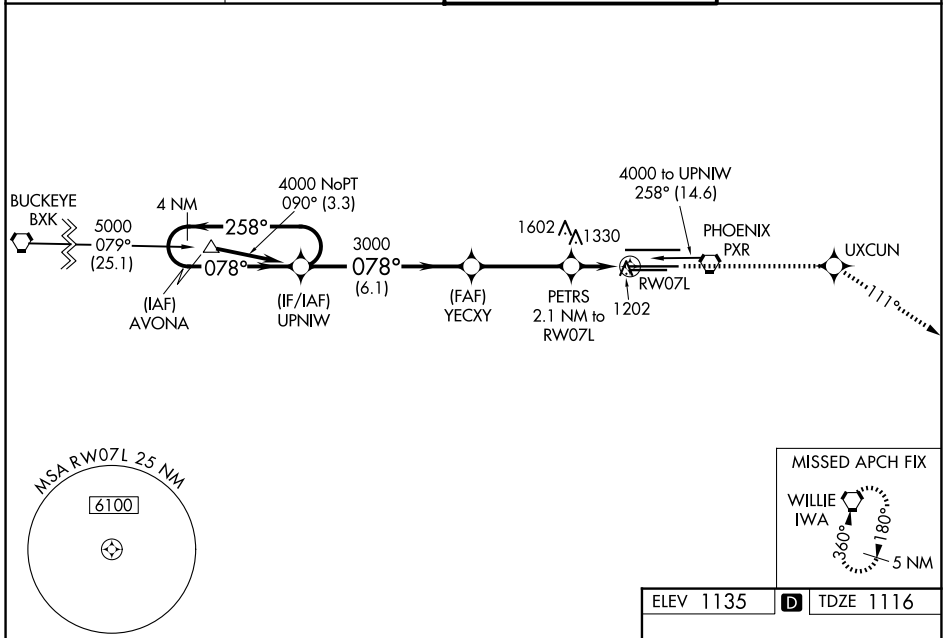
WAAS CH <b>65811</b> <b>W07A</b>	APP CRS <b>078°</b>	Rwy Ldg <b>10300</b> TDZE <b>1116</b> Apt Elev <b>1135</b>
--	------------------------	--

# RNAV (GPS) Y RWY 7L

PHOENIX SKY HARBOR INTL (PHX)

RNP APCH - GPS.		MALSRL	MISSED APPROACH: Climb to 5000 direct UXCUN and via 111° track to IWA VORTAC and hold.
<p>▼ For inop ALS, increase visibility LPV all Cats to RVR 4500, LNAV/VNAV all Cats to RVR 6000, LNAV Cats C/D to 1½ SM. For uncompensated Baro-VNAV systems, LNAV/VNAV NA below -17°C or above 46°C. Simultaneous approach authorized. Use of FD or AP providing RNAV track guidance required during simultaneous operations. LNAV procedure NA during simultaneous operations.</p>			

D-ATIS <b>127.575</b>	PHOENIX APP CON <b>128.65 353.9</b>	PHOENIX TOWER <b>118.7 278.8</b> (8-26) <b>120.9 254.3</b> (7L-25R, 7R-25L)	GND CON <b>119.75 269.2</b> (N) <b>132.55 269.2</b> (S)
--------------------------	--	---	---



SW-4, 14 MAY 2026 to 11 JUN 2026

SW-4, 14 MAY 2026 to 11 JUN 2026

VGSI and RNAV glidepath not coincident (VGSI Angle 3.00/TCH 73).		5000	UXCUN	tr 111°	IWA
4 NM Holding Pattern		4000	UPNIW	3000	YECXY
GP 3.00° TCH 57		4000	078°	3000	078°
		6.1 NM	3.6 NM	0.8	1.3 NM
		PETRS 2.1 NM to RW07L		1.3 NM to RW07L	
		1840		RW07L	
CATEGORY	A	B	C	D	
LPV DA	1389/24		273 (300-½)		
LNAV/VNAV DA	1519/50		403 (400-1)		
LNAV MDA	1580/24	464 (500-½)	1580/40	464 (500-¾)	1580/50
CIRCLING	1740-1	605 (700-1)	2040-2¾	905 (1000-2¾)	2560-3
		1425 (1500-3)		HIRL Rwy 8-26, 7L-25R and 7R-25L REIL Rwy 26	