

ILS or LOC Z RWY 30

MOUNTAIN HOME AFB (KMUO)

LOC I-BRN 111.7	APCH CRS 302°	Rwy Idg 13,510
		TDZE 2996
		Arprt Elev 2996

[USAF]

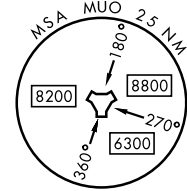
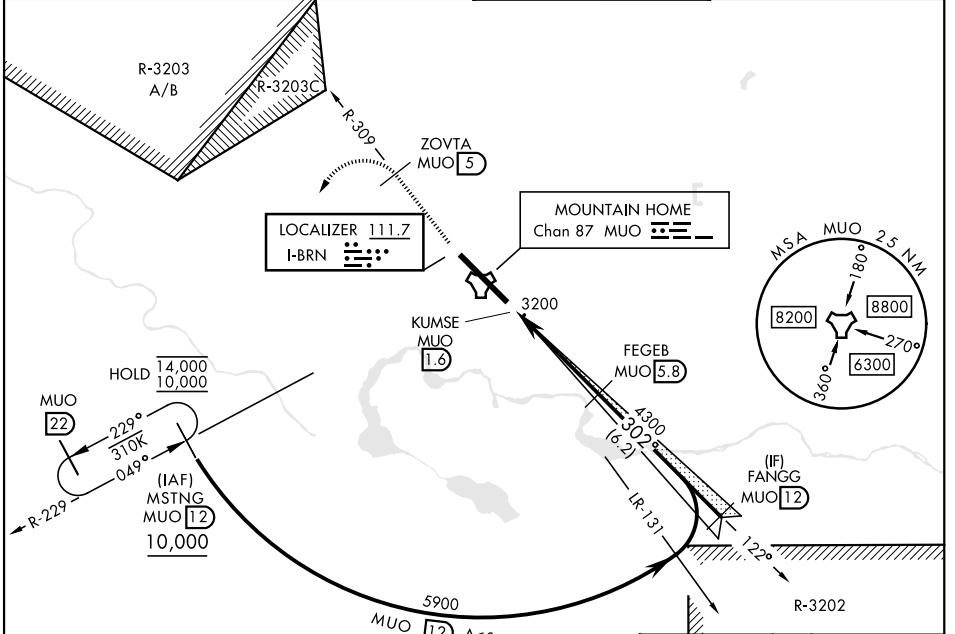
RADAR or DME required.

- ▼ * When ALS inop, increase RVR to 40 and vis to 3/4 mile.
- ** When ALS inop, increase CAT AB RVR to 55 and vis to 1 mile, CAT CDE vis to 1 1/8 miles.
- *** Circling not authorized NE of Rwy 12-30.

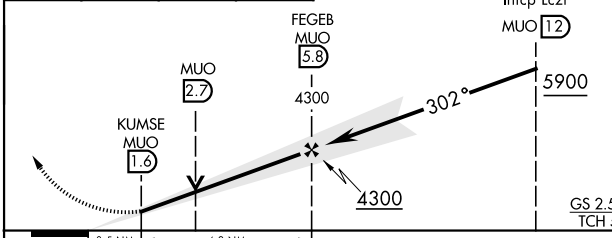
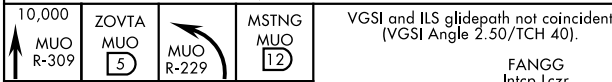


MISSED APPROACH: Climb to 10,000 via MUO R-309 to ZOVTA/5 DME, turn left on hdg 169° to intercept MUO R-229 to MSTNG/12 DME and hold, continue climb-in-hold to 10,000.

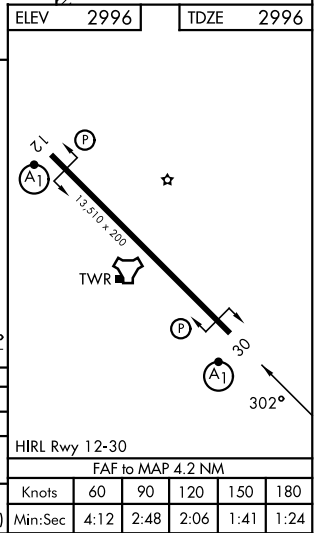
ATIS 273.5	APP CON 124.8 259.1	TOWER 133.85 253.5	GND CON 120.5 275.8
----------------------	-------------------------------	------------------------------	-------------------------------



EMERG SAFE ALT 100 NM 14,100



CATEGORY	A	B	C	D	E
S-ILS 30 *	3196/24 200 (200-1/2)				
S-LOC 30 **	3480/24	484 (500-1/2)	3480/50 484 (500-1)		
CIRCLING ***	3520-1	524 (600-1)	3520-1 1/2 524 (600-1 1/2)	3560-2 564 (600-2)	3700-2 1/2 704 (800-2 1/2)



ILS or LOC Z RWY 30

NW-1, 14 MAY 2026 to 11 JUN 2026

NW-1, 14 MAY 2026 to 11 JUN 2026