

MOUNTAIN HOME, IDAHO

TACAN Z RWY 30

MOUNTAIN HOME AFB (KMUO)

TACAN MUO Chan 87	APCH CRS 295°	Rwy Ldg TDZE 2996 Arprt Elev 2996
--------------------------	----------------------	--

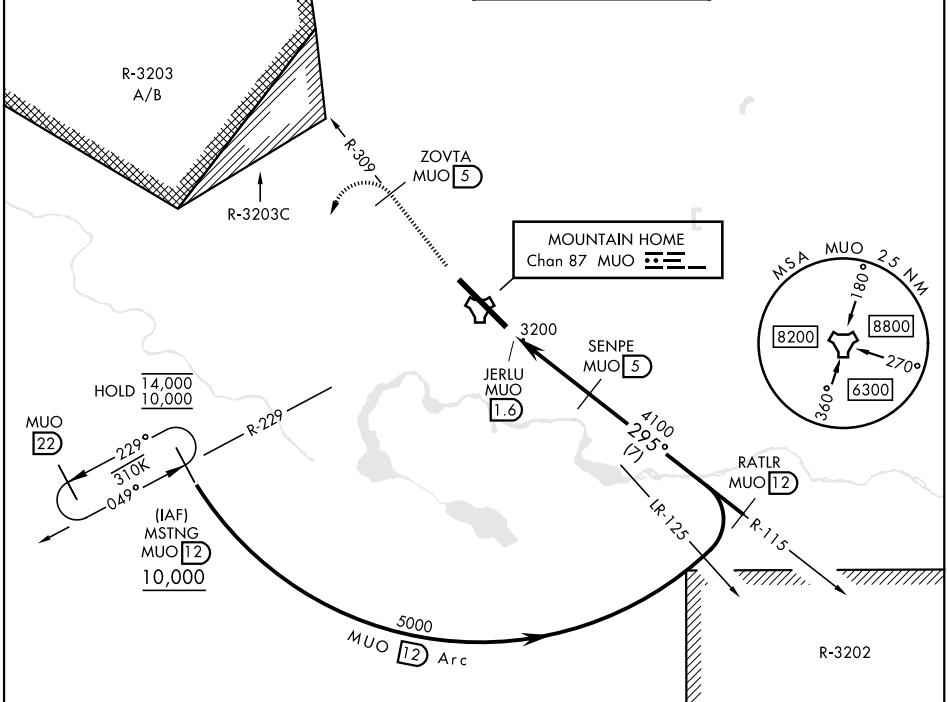
[USAF]

▼ * When ALS inop, increase CAT AB RVR to 55, vis to 1 mile, CAT CDE vis to 1½ miles.
** Circling not authorized NE of Rwy 12-30.



MISSED APPROACH: Climb to 10,000 on MUO TACAN R-309 to ZOVTA/5 DME, and then turn left on heading 169° to intercept MUO R-229 to MSTNG/12 DME and hold, continue climb-in-hold to 10,000.

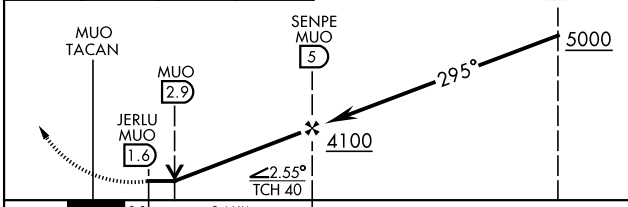
ATIS 273.5	APP CON 124.8 259.1	TOWER 133.85 253.5	GND CON 120.5 275.8
-------------------	----------------------------	---------------------------	----------------------------



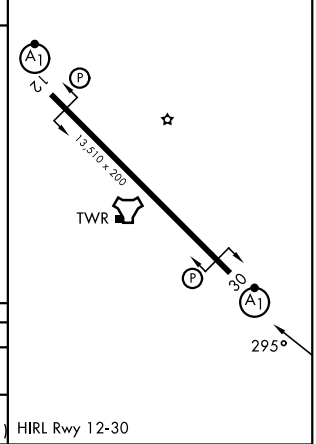
NW-1, 14 MAY 2026 to 11 JUN 2026

NW-1, 14 MAY 2026 to 11 JUN 2026

EMERG SAFE ALT 100 NM 14,100



ELEV	2996	TDZE	2996
------	------	------	------



CATEGORY	A	B	C	D	E
S-30 *	3520/24 524 (600-½)		3520/55 524 (600-1)		
CIRCLING **	3520-1 524 (600-1)		3520-1½ 524 (600-1½)	3560-2 564 (600-2)	3700-2½ 704 (800-2½)

HIRL Rwy 12-30

MOUNTAIN HOME, IDAHO
Amdt 4 12JUN25

43°03'N-115°52'W

MOUNTAIN HOME AFB (KMUO)

TACAN Z RWY 30