

12JUN25

DENVER THREE DEPARTURE

DENVER DEP CON
134.85 251.125
CLNC DEL
126.65

RADAR required.

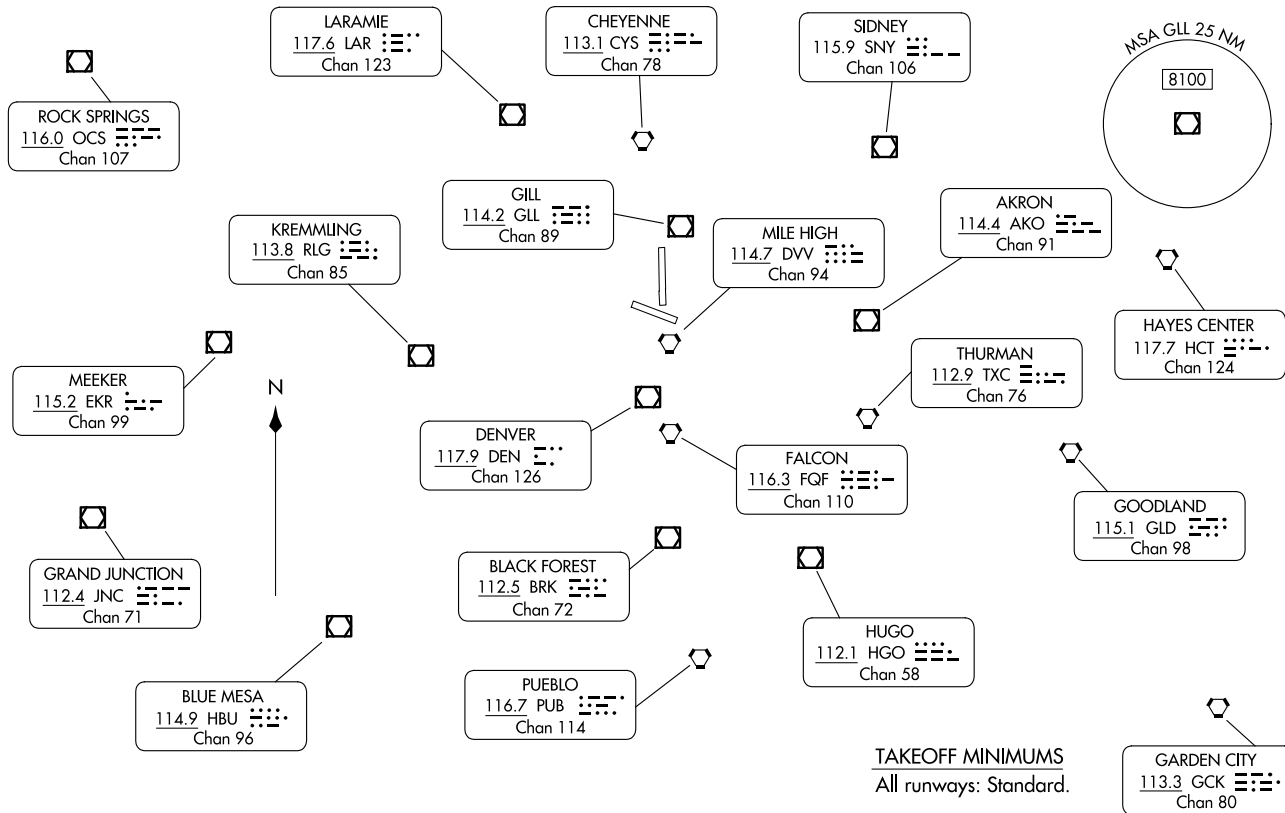
TOP ALTITUDE:
ASSIGNED BY ATC.

25163

DENVER THREE DEPARTURE

AL-325 (FAA)

GREENEY-WELD COUNTY (GXY)
GREENEY, COLORADO



TAKEOFF MINIMUMS
All runways: Standard.

(CONTINUED ON FOLLOWING PAGE)

NOTE: Chart not to scale.

GREENEY, COLORADO
GREENEY-WELD COUNTY (GXY)



DEPARTURE ROUTE DESCRIPTION

TAKEOFF ALL RUNWAYS: Fly assigned heading and altitude for RADAR vectors to assigned route. Expect filed altitude 10 minutes after departure.

LOST COMMUNICATIONS: If no transmissions are received within one minute after departure, maintain assigned heading until 7000, then climb to filed altitude direct to DEN VOR/DME, then on assigned route. If filed altitude is above 10000, cross DEN VOR/DME at or above 11000.

SW-1, 14 MAY 2026 to 11 JUN 2026

SW-1, 14 MAY 2026 to 11 JUN 2026