

LOC/DME I-DCI <b>110.3</b> Chan 40	APP CRS <b>350°</b>	Rwy Ldg <b>8900</b> TDZE <b>4665</b> Apt Elev <b>4697</b>
--	------------------------	---

# ILS or LOC RWY 35

GREELEY-WELD COUNTY (GXY)

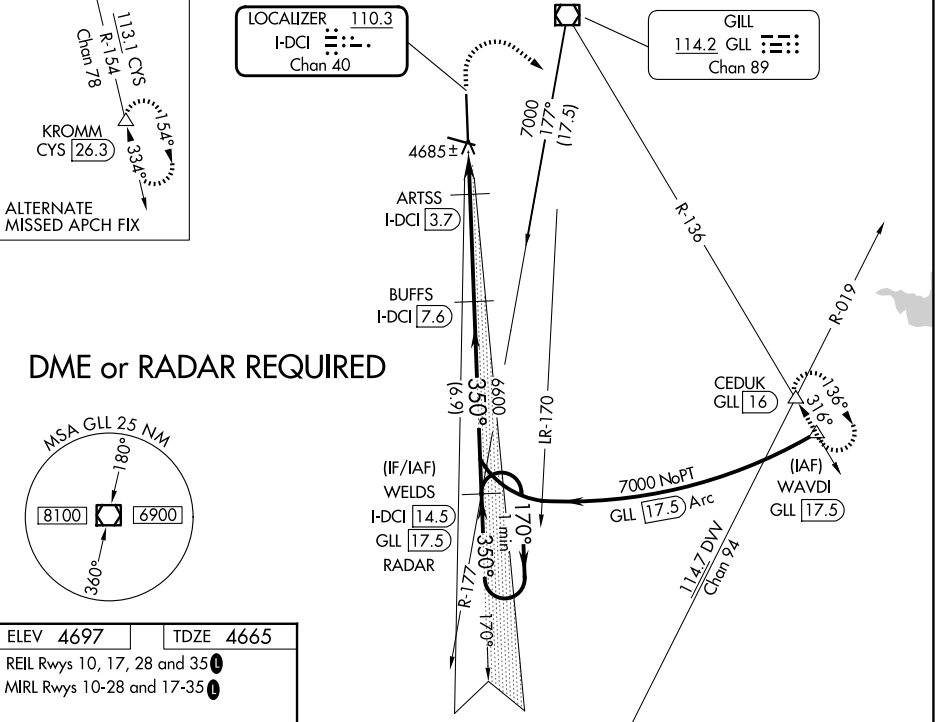
**⚠** VDP NA when using Northern Colorado Rgnl altimeter setting. When local altimeter not received, use Northern Colorado Rgnl altimeter setting and increase DA to 4950 feet and all visibilities ¼ SM; increase all MDAs 100 feet and visibility Cats C and D ½ SM.

**MISSED APPROACH:** Climb to 5300 then climbing right turn to 7000 on heading 120° and GLL VOR/DME R-136 to CEDUK INT/GLL 16 DME and hold.

AWOS-3PT  
**135.175**

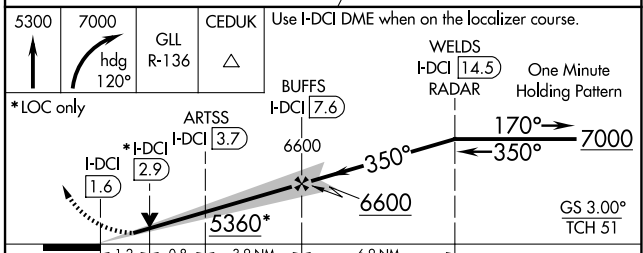
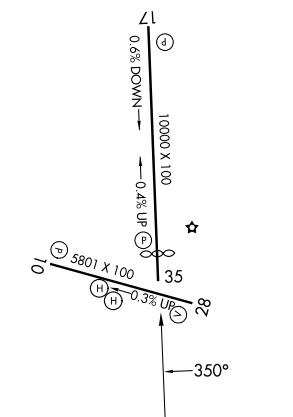
DENVER APP CON  
**134.85 251.125**

UNICOM  
**122.7 (CTAF)**



## DME or RADAR REQUIRED

ELEV <b>4697</b>	TDZE <b>4665</b>
REIL Rwy 10, 17, 28 and 35	
MIRL Rwy 10-28 and 17-35	



CATEGORY	A	B	C	D
S-ILS 35	4865-¾ 200 (200-¾)			
S-LOC 35	5100-1	435 (500-1)	5100-1¼	435 (500-1¼)
CIRCLING	5120-1 423 (500-1)	5200-1 503 (600-1)	5200-1½ 503 (600-1½)	5380-2¼ 683 (700-2¼)

SW-1, 14 MAY 2026 to 11 JUN 2026

SW-1, 14 MAY 2026 to 11 JUN 2026