

# PIKES THREE DEPARTURE

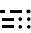
AL-325 (FAA)

GREELEY-WELD COUNTY (GXY)  
GREELEY, COLORADO

DENVER DEP CON  
134.85 251.125  
CLNC DEL  
126.65


**TOP ALTITUDE:  
ASSIGNED BY ATC**


RADAR required. 

GILL  
114.2 GLL   
Chan 89


## TAKEOFF MINIMUMS

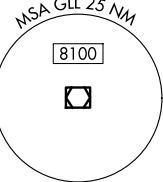
All Rwy's: Standard.

DENVER  
117.9 DEN   
Chan 126

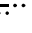
HUGO  
112.1 HGO   
Chan 58

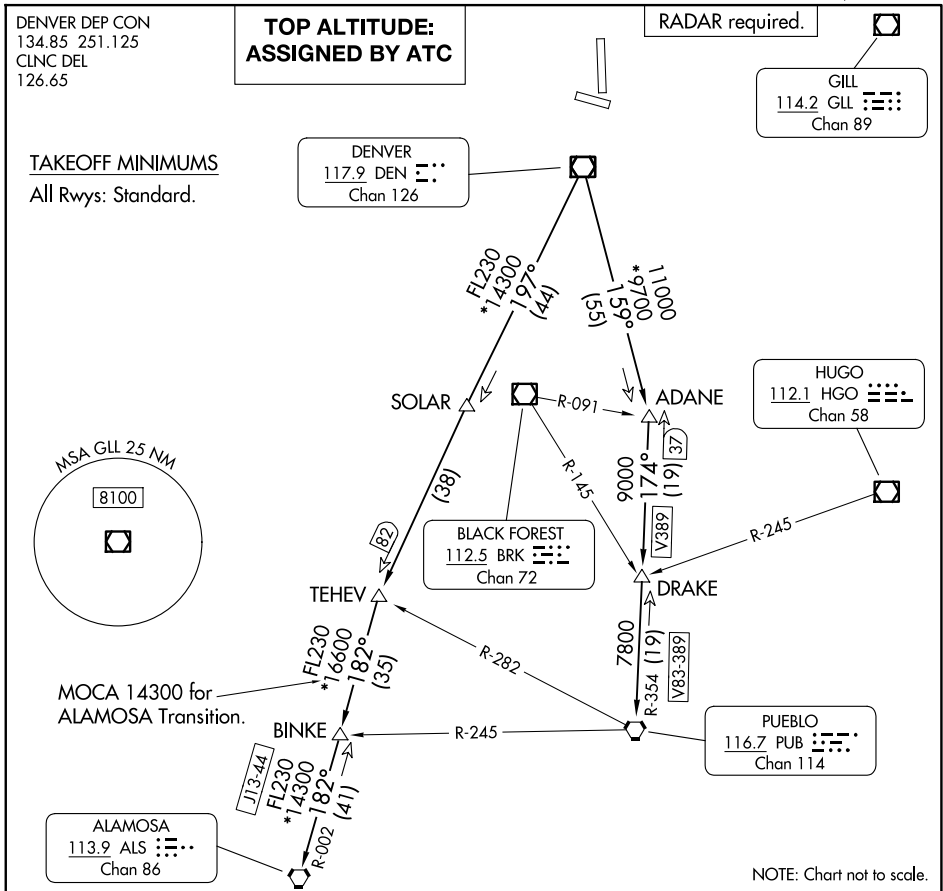
BLACK FOREST  
112.5 BRK   
Chan 72

PUEBLO  
116.7 PUB   
Chan 114



MOCA 14300 for  
ALAMOSA Transition.

ALAMOSA  
113.9 ALS   
Chan 86



NOTE: Chart not to scale.

## DEPARTURE ROUTE DESCRIPTION

**TAKEOFF ALL RUNWAYS:** Fly assigned heading and altitude for RADAR vectors to assigned route. Expect filed altitude 10 minutes after departure.

**LOST COMMUNICATIONS:** If no transmissions are received within one minute after departure, maintain assigned heading until 7000, then climb to filed altitude direct to DEN VOR/DME, then on assigned route. If filed altitude is above 10000, cross DEN VOR/DME at or above 11000.

**ALAMOSA TRANSITION (PIKES3.ALS):** From over DEN VOR/DME on DEN R-197 to TEHEV, then on ALS R-002 to ALS VORTAC.

**BINKE TRANSITION (PIKES3.BINKE):** From over DEN VOR/DME on DEN R-197 to TEHEV, then on ALS R-002 to BINKE.

**PUEBLO TRANSITION (PIKES3.PUB):** From over DEN VOR/DME on DEN R-159 to ADANE, then on PUB R-354 to PUB VORTAC.

# PIKES THREE DEPARTURE

(PIKES3.DEN) 12JUN25

GREELEY, COLORADO  
GREELEY-WELD COUNTY (GXY)

SW-1, 14 MAY 2026 to 11 JUN 2026

SW-1, 14 MAY 2026 to 11 JUN 2026