

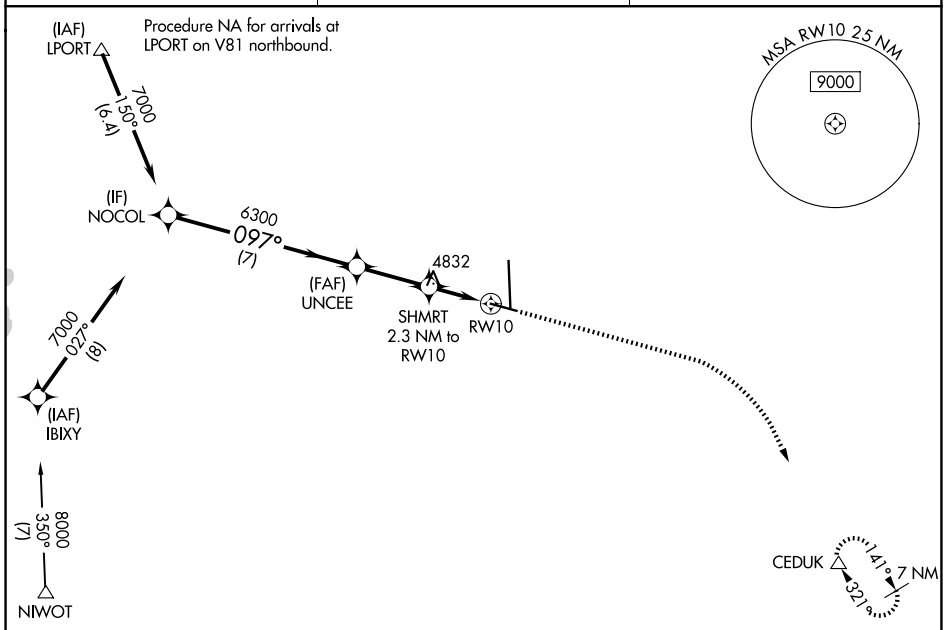
WAAS CH 62900 W10A	APP CRS 097°	Rwy Ldg TDZE Apt Elev 5801 4661 4697
--	------------------------	--

RNAV (GPS) RWY 10

GREELEY-WELD COUNTY (GXY)

RNP APCH.	MISSED APPROACH: Climb to 5400 then climbing right turn to 7000 direct CEDUK and hold.
<p>▼ For uncompensated Baro-VNAV systems, LNAV/VNAV NA below -24°C or above 54°C.</p> <p>▲</p>	

AWOS-3PT 135.175	DENVER APP CON 134.85 251.125	UNICOM 122.7 (CTAF) 0
----------------------------	---	---------------------------------

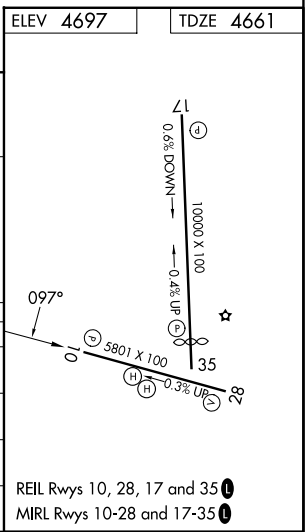


SW-1, 14 MAY 2026 to 11 JUN 2026

SW-1, 14 MAY 2026 to 11 JUN 2026

Procedure NA for arrivals at NIWOT on V575 southeast bound and V220 southwest bound.

VGSi and RNAV glidepath not coincident NOCOL (VGSi Angle 3.00/TCH 43).				
7000 ——— 097° ——— UNCEE ——— SHMRT 2.3 NM to RW10 ——— *1.4 NM to RW10 ——— CEDUK				
GP 3.00° TCH 50 ——— 6300 ——— *5440				
7 NM ——— 2.7 NM ——— 0.9 NM ——— 1.4 NM				
CATEGORY	A	B	C	D
LPV DA		4911-3/4	250 (300-3/4)	
LNAV/VNAV DA		4920-3/4	259 (300-3/4)	
LNAV MDA	5140-1	479 (500-1)	5140-13/8	479 (500-13/8)
CIRCLING	5140-1 443 (500-1)	5200-1 503 (600-1)	5200-1 1/2 503 (600-1 1/2)	5380-2 1/4 683 (700-2 1/4)



REIL Rwy 10, 28, 17 and 35
MIRL Rwy 10-28 and 17-35