

ROCKIES SEVEN DEPARTURE  
(ROCK17.DEN) 12JUN25

(ROCK17.DEN) 25163  
ROCKIES SEVEN DEPARTURE

AL-325 (FAA)

GREELEY-WELD COUNTY (GXY)  
GREELEY, COLORADO

DENVER DEP CON  
134.85 251.125  
CLNIC DEL  
126.65

RADAR required.

**TOP ALTITUDE:  
ASSIGNED BY ATC**

GILL  
114.2 GLL  
Chan 89

MEEKER  
115.2 EKR  
Chan 99

KREMLING  
113.8 RLG  
Chan 85

RIFLE  
113.35 RIL  
Chan 80(Y)

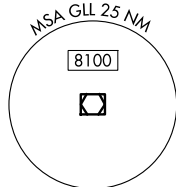
RED TABLE  
113.0 DBL  
Chan 77

MONTROSE  
117.1 MTJ  
Chan 118

DOVE CREEK  
114.6 DVC  
Chan 93

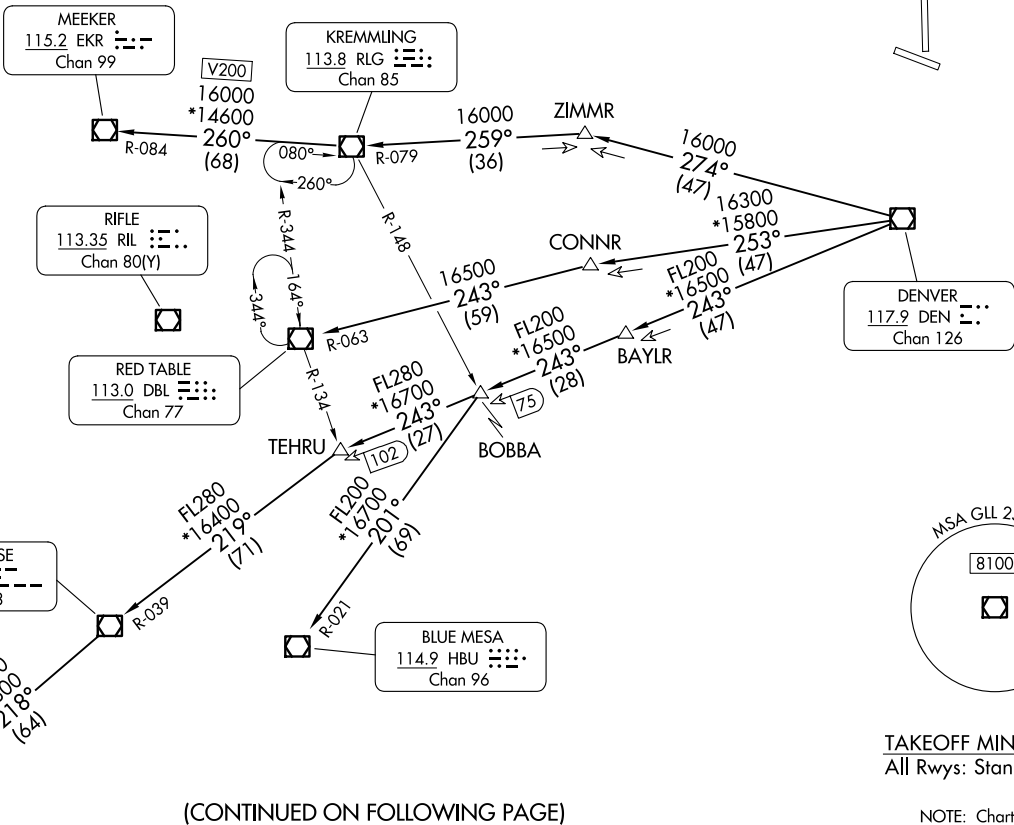
DENVER  
117.9 DEN  
Chan 126

BLUE MESA  
114.9 HBU  
Chan 96



**TAKEOFF MINIMUMS**  
All Rwys: Standard.

NOTE: Chart not to scale.



(CONTINUED ON FOLLOWING PAGE)

GREELEY, COLORADO  
GREELEY-WELD COUNTY (GXY)



DEPARTURE ROUTE DESCRIPTION

TAKEOFF ALL RUNWAYS: Fly assigned heading and altitude for RADAR vectors to assigned route. Expect filed altitude 10 minutes after departure.

LOST COMMUNICATIONS: If no transmissions are received within one minute after departure, maintain assigned heading until 7000, then climb to filed altitude direct to DEN VOR/DME, then on assigned route. If filed altitude is above 10000, cross DEN VOR/DME at or above 11000.

BLUE MESA TRANSITION (ROCKI7.HBU): From over DEN VOR/DME on DEN R-243 and HBU R-021 to HBU VOR/DME.

DOVE CREEK TRANSITION (ROCKI7.DVC): From over DEN VOR/DME on DEN R-243 and MTJ R-039 to MTJ VOR/DME, then on MTJ R-218 and DVC R-035 to DVC VORTAC.

KREMMLING TRANSITION (ROCKI7.RLG): From over DEN VOR/DME on DEN R-274 and RLG R-079 to RLG VOR/DME.

MEEKER TRANSITION (ROCKI7.EKR): From over DEN VOR/DME on DEN R-274 and RLG R-079 to RLG VOR/DME, then on RLG R-260 and EKR R-084 to EKR VOR/DME.

MONTROSE TRANSITION (ROCKI7.MTJ): From over DEN VOR/DME on DEN R-243 and MTJ R-039 to MTJ VOR/DME.

RED TABLE TRANSITION (ROCKI7.DBL): From over DEN VOR/DME on DEN R-253 and DBL R-063 to DBL VOR/DME.

SW-1, 14 MAY 2026 to 11 JUN 2026

SW-1, 14 MAY 2026 to 11 JUN 2026