

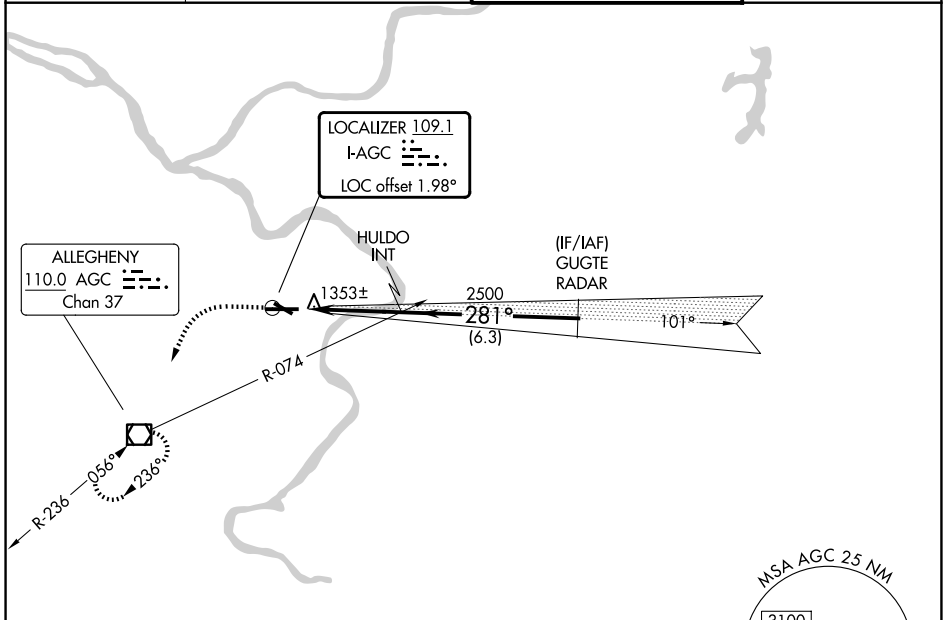
LOC I-AGC <b>109.1</b>	APP CRS <b>281°</b>	Rwy Ldg TDZE Apt Elev	<b>6501</b> <b>1251</b> <b>1252</b>
---------------------------	------------------------	-----------------------------	---

# ILS or LOC RWY 28

ALLEGHENY COUNTY (AGC)

RADAR required.		MALS	MISSED APPROACH: Climb to 2000 then climbing left turn to 3000 direct AGC VOR/DME and hold, continue climb-in-hold to 3000.
⚠ Autopilot coupled approach NA below 1900. Circling Rwy 13 NA at night. For inop ALS, increase S-LOC Cats C and D visibility to RVR 6000. Inop table does not apply to S-ILS 28.			

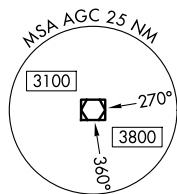
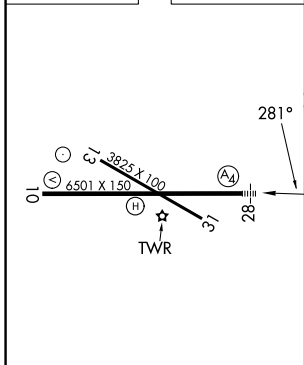
ATIS <b>120.55</b>	PITTSBURGH APP CON <b>119.35 285.575</b>	ALLEGHENY TOWER <b>121.1 239.0</b>	GND CON <b>121.7</b>
-----------------------	---	---------------------------------------	-------------------------



NE-4, 14 MAY 2026 to 11 JUN 2026

NE-4, 14 MAY 2026 to 11 JUN 2026

ELEV 1252	TDZE 1251
-----------	-----------



REIL Rwys 10, 13, and 31 HIRL Rwys 10-28 and 13-31	281° 2000 3000 AGC 				
FAF to MAP 3.8 NM	HULDO INT 2500 GUGTE RADAR 3000 GS 3.00° TCH 51 3.8 NM 6.3 NM				
	CATEGORY	A	B	C	D
	S-ILS 28	1501/40 250 (300-¾)			
	S-LOC 28	1660/40	409 (500-¾)	1660/50	409 (500-1)
	CIRCLING	1720-1	468 (500-1)	1980-2 728 (800-2)	1980-2¼ 728 (800-2¼)