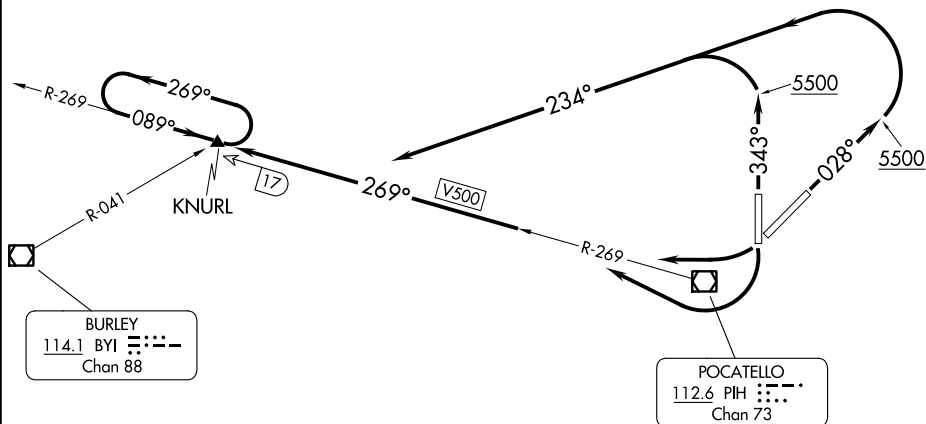


SALT LAKE CENTER
128.35 239.25
POCATELLO TOWER ★
119.1 (CTAF) 257.8



TAKEOFF MINIMUMS

Rwys 3, 21, 35: Standard.

Rwy 17, 400-2 or standard with minimum climb of 270' per NM to 4900.

TAKEOFF OBSTACLE NOTES

Rwy 3, Trees beginning 3353' from DER, 735' left of centerline, up to 100' AGL/4549' MSL.

Rod on obstruction light 978' from DER, 759' right of centerline, 39' AGL/4486' MSL.

Rwy 17, Transmission tower 1.1 NM from DER, 2395' left of centerline, 252' AGL/4693' MSL.

Trees beginning 1.6 NM from DER, 2642' left of centerline, up to 100' AGL/4759' MSL.

Fence 112' from DER, 416' right of centerline, 12' AGL/4453' MSL.

Bush 30' from DER, 261' right of centerline, 3' AGL/4445' MSL.

Fence 208' from DER, 421' right of centerline, 13' AGL/4449' MSL.

Rwy 21, Antenna 453' from DER, 309' left of centerline, 20' AGL/4466' MSL.

Light on localizer, 543' from DER, 286' left of centerline, 20' AGL/4462' MSL.

Rwy 35, Electrical equipment 197' from DER, 248' left of centerline, 7' AGL/4454' MSL.

NOTE: Chart not to scale.

DEPARTURE ROUTE DESCRIPTION

TAKEOFF RUNWAY 3: Climb heading 028° to 5500, then climbing left turn to 7500 via heading 234° and PIH R-269 to KNURL INT, thence

TAKEOFF RUNWAY 35: Climb heading 343° to 5500, then climbing left turn to 7500 via heading 234° and PIH R-269 to KNURL INT, thence

TAKEOFF RUNWAY 17: Climbing right turn to 7500 via PIH R-269 to KNURL INT, thence

TAKEOFF RUNWAY 21: Climbing right turn to 7500 via PIH R-269 to KNURL INT, thence

. . . . via assigned route expect filed altitude 10 minutes after departure.