

| | | |
|---|------------------------|---|
| LOC/DME I-PWM 109.9 Chan 36 | APP CRS 110° | Rwy Ldg 7200 TDZE 76 Apt Elev 76 |
|---|------------------------|---|

ILS RWY 11 (CAT II & III)

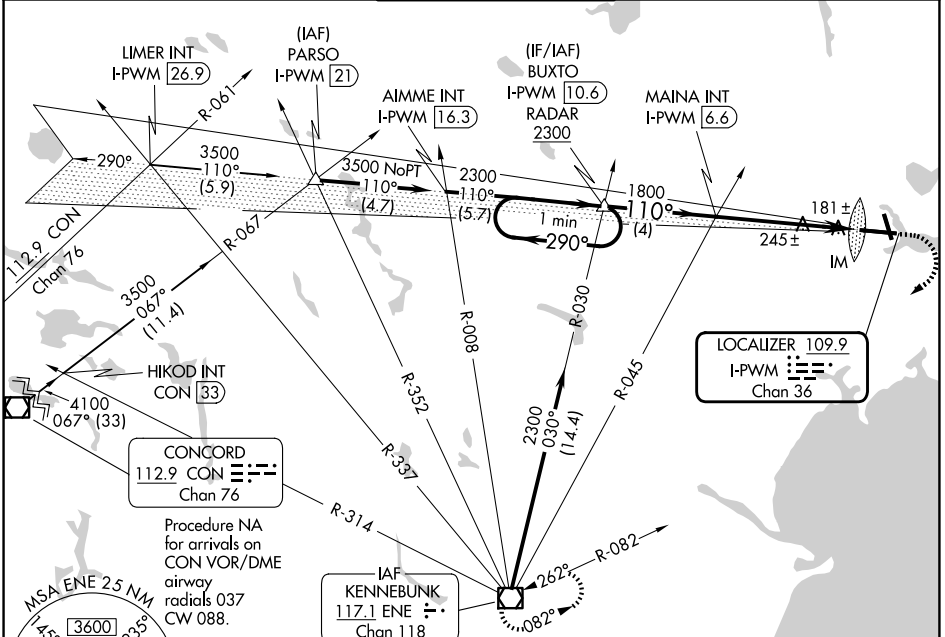
PORTLAND INTL JETPORT (PWM)

Procedure NA when control tower closed.

ALSF-2

MISSED APPROACH: Climb to 600 then climbing right turn to 3000 direct ENE VOR/DME and hold.

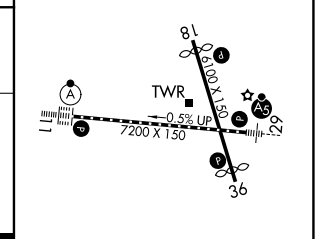
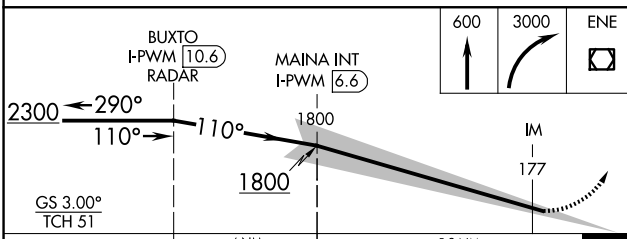
| | | | | |
|-----------------------|--|--|-------------------------|-------------------------|
| ATIS 119.05 | PORTLAND APP CON * 119.75 269.35 | PORTLAND TOWER * 120.9 (CTAF) 257.8 | GND CON 121.9 | UNICOM 122.95 |
|-----------------------|--|--|-------------------------|-------------------------|



Procedure NA for arrivals on CON VOR/DME airway radials 037 CW 088.

Procedure NA for arrivals on ENE VOR/DME airway radial 062.

| | |
|---------|---------|
| ELEV 76 | TDZE 76 |
|---------|---------|



| | | | | |
|----------|-----------------------------|---|---|---|
| CATEGORY | A | B | C | D |
| S-ILS 11 | CAT II RA 108/12 100 DA 176 | | | |
| S-ILS 11 | CAT III RVR 06 | | | |

- TDZL/RCLS Rwy 11
- MIRL Rwy 18-36
- HIRL Rwy 11-29
- REIL Rwys 18 and 36

CATEGORY II & III ILS-SPECIAL AIRCREW & AIRCRAFT CERTIFICATION REQUIRED

NE-1, 14 MAY 2026 to 11 JUN 2026

NE-1, 14 MAY 2026 to 11 JUN 2026