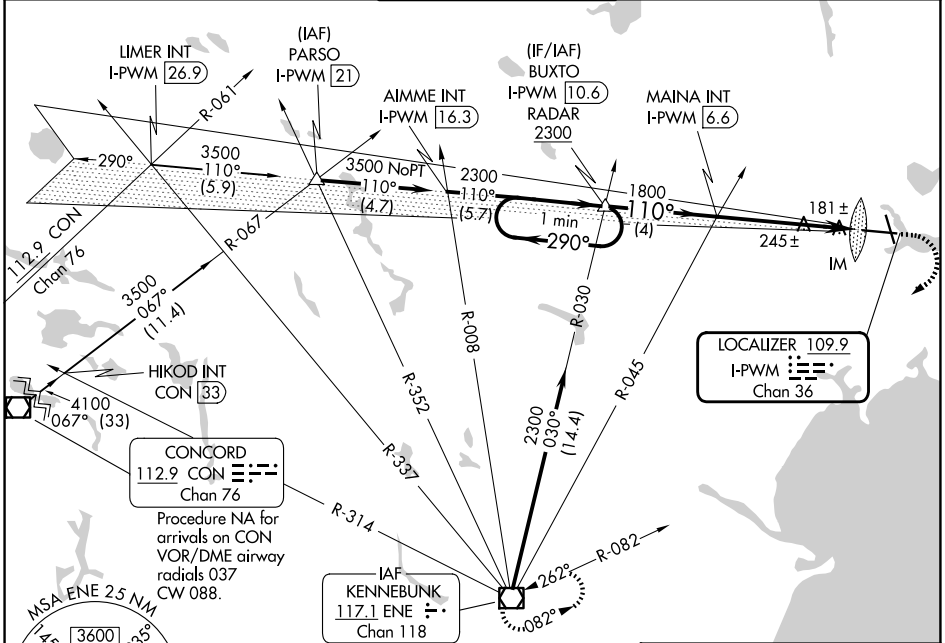


LOC/DME I-PWM <b>109.9</b> Chan <b>36</b>	APP CRS <b>110°</b>	Rwy Ldg <b>7200</b> TDZE <b>76</b> Apt Elev <b>76</b>
---	------------------------	---

**ILS RWY 11 (SA CAT I)**  
PORTLAND INTL JETPORT (PWM)

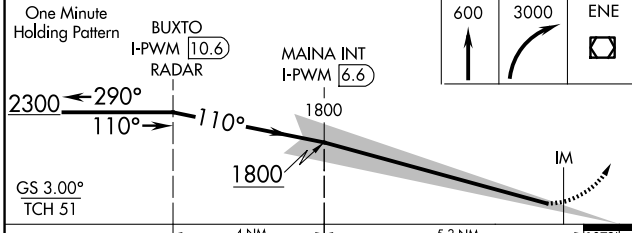
Procedure NA when control tower closed. Requires specific OPSPEC, MSPEC, or LOA approval and use of HUD to DH.	ALSIF-2	MISSED APPROACH: Climb to 600 then climbing right turn to 3000 direct ENE VOR/DME and hold.

ATIS <b>119.05</b>	PORTLAND APP CON * <b>119.75 269.35</b>	PORTLAND TOWER * <b>120.9</b> (CTAF) <b>257.8</b>	GND CON <b>121.9</b>	UNICOM <b>122.95</b>
-----------------------	--	--	-------------------------	-------------------------

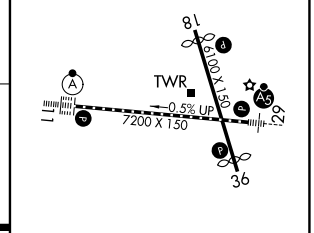


NE-1, 14 MAY 2026 to 11 JUN 2026

NE-1, 14 MAY 2026 to 11 JUN 2026



ELEV 76	<b>D</b> TDZE 76
---------	------------------



CATEGORY	A	B	C	D
S-ILS 11	RA 166/14		150 DA 226	

**SA CATEGORY I ILS - SPECIAL AIRCREW & AIRCRAFT CERTIFICATION REQUIRED**

TDZL/RCLS Rwy 11 MIRL Rwy 18-36 HIRL Rwy 11-29 REIL Rws 18 and 36