

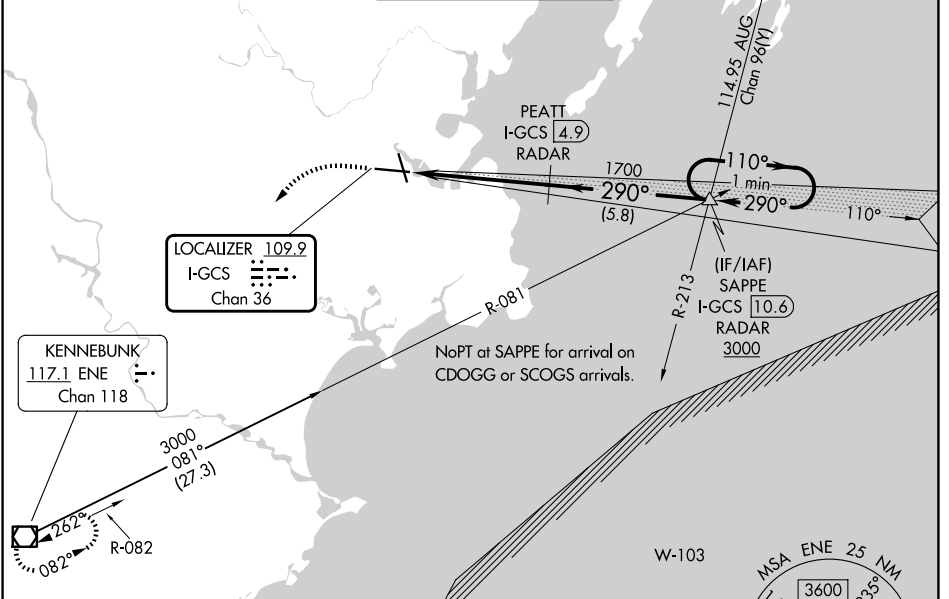
LOC/DME I-GCS <b>109.9</b> Chan <b>36</b>	APP CRS <b>290°</b>	Rwy Ldg <b>7200</b> TDZE <b>56</b> Apt Elev <b>76</b>
---	------------------------	---

# ILS RWY 29 (SA CAT I & II)

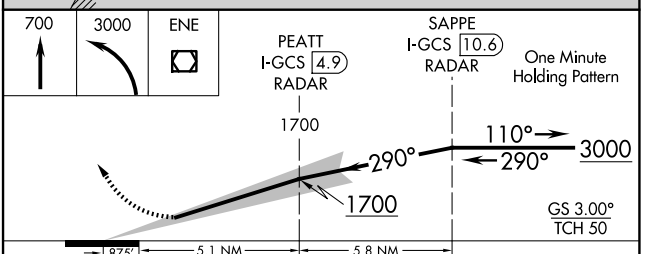
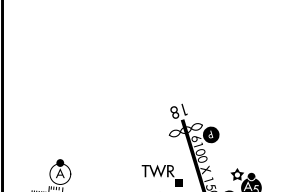
PORTLAND INTL JETPORT (PWM)

<p><b>▽</b> DME or RADAR required. DME required when Portland approach control closed. <b>▲</b> Procedure NA when control tower closed. SA CAT I: Requires specific OPSPEC, MSPEC, or LOA approval and use of HUD to DH. SA CAT II: Reduced lighting requires specific OPSPEC, MSPEC, or LOA approval and use of Autoland or HUD to touchdown.</p>	<p>MALSR </p>	<p>MISSED APPROACH: Climb to 700 then climbing left turn to 3000 direct ENE VOR/DME and hold.</p>
--	-------------------	---

ATIS <b>119.05</b>	PORTLAND APP CON ★ <b>119.75 269.35</b>	PORTLAND TOWER ★ <b>120.9 0 (CTAF) 257.8</b>	GND CON <b>121.9</b>	UNICOM <b>122.95</b>
-----------------------	--	---	-------------------------	-------------------------



ELEV 76	<b>D</b>	TDZE 56
---------	----------	---------



CATEGORY	A	B	C	D
S-ILS 29	SA CAT I	RA 206/14	150 DA 206	
S-ILS 29	SA CAT II	RA 146/12	100 DA 156	

**SA CATEGORY I & II ILS - SPECIAL AIRCREW & AIRCRAFT CERTIFICATION REQUIRED**

NE-1, 14 MAY 2026 to 11 JUN 2026

NE-1, 14 MAY 2026 to 11 JUN 2026