

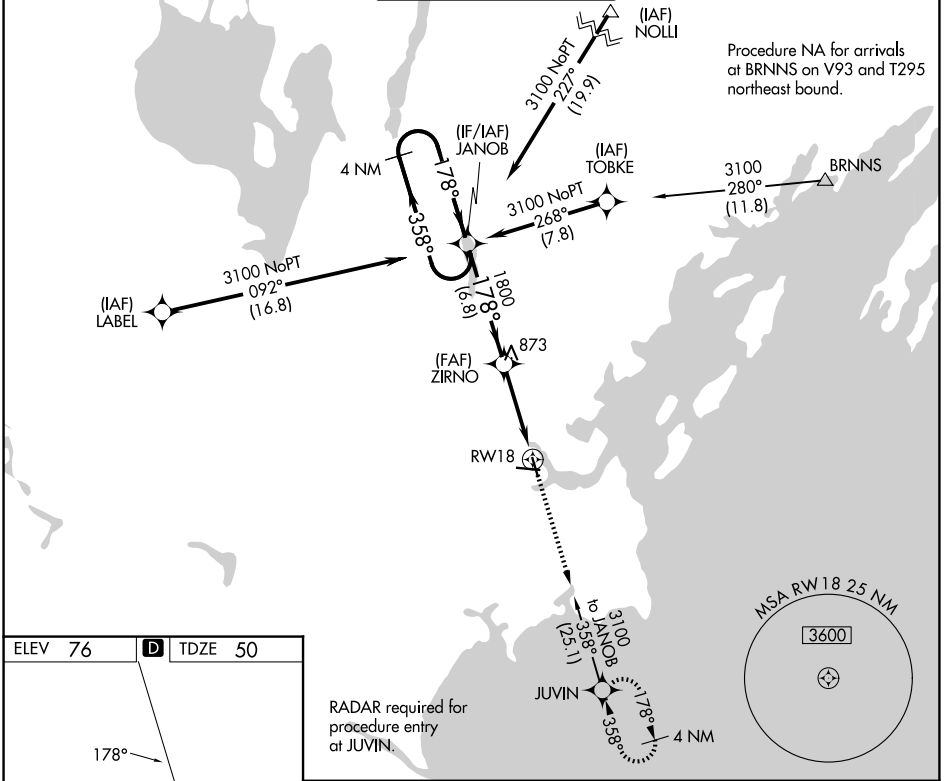
WAAS CH <b>77925</b> <b>W18A</b>	APP CRS <b>178°</b>	Rwy Ldg TDZE Apt Elev	<b>5150</b> <b>50</b> <b>76</b>
--	------------------------	-----------------------------	---------------------------------------

# RNAV (GPS) RWY 18

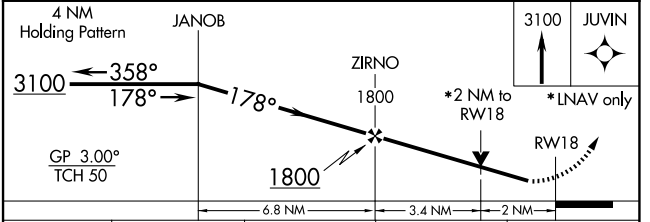
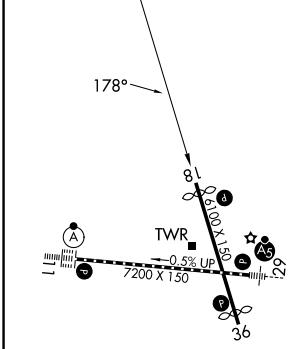
PORTLAND INTL JETPORT (PWM)

RNP APCH.	MISSED APPROACH: Climb to 3100 direct JUVIN and hold, continue climb-in-hold to 3100.
▼ For uncompensated Baro-VNAV systems, LNAV/VNAV NA below -19°C (-2°F) or above 54°C (130°F). Rwy 18 helicopter visibility reduction below ¾ SM NA.	

ATIS <b>119.05</b>	PORTLAND APP CON ★ <b>119.75 269.35</b>	PORTLAND TOWER ★ <b>120.9 0 (CTAF) 257.8</b>	GND CON <b>121.9</b>	UNICOM <b>122.95</b>
-----------------------	--	---	-------------------------	-------------------------



ELEV 76	<b>D</b>	TDZE 50
---------	----------	---------



CATEGORY	A	B	C	D
LPV DA		300-¾	250 (300-¾)	
LNAV/VNAV DA		477-1⅓	427 (500-1⅓)	
LNAV MDA	740-1	690 (700-1)	740-2	690 (700-2)
CIRCLING	740-1	664 (700-1)	740-2 664 (700-2)	860-2½ 784 (800-2½)

- TDZL/RCLS Rwy 11
- MIRL Rwy 18-36
- HIRL Rwy 11-29
- REIL Rws 18 and 36

NE-1, 14 MAY 2026 to 11 JUN 2026

NE-1, 14 MAY 2026 to 11 JUN 2026