

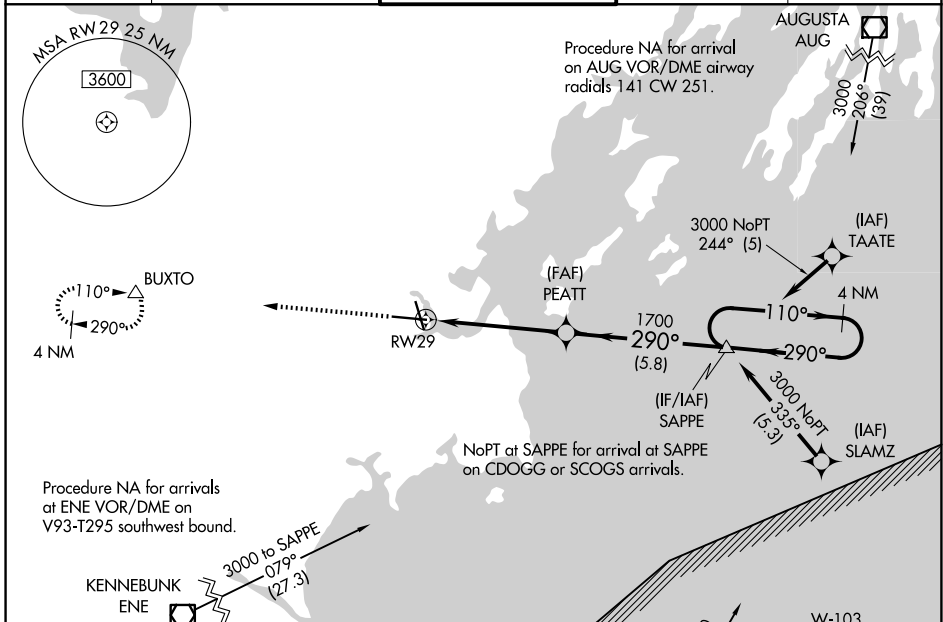
WAAS CH 65626 W29A	APP CRS 290°	Rwy Ldg 7200 TDZE 56 Apt Elev 76
--	------------------------	---

RNAV (GPS) RWY 29

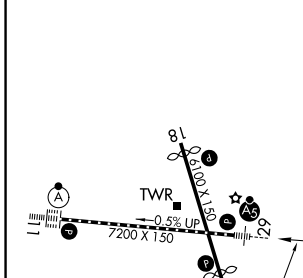
PORTLAND INTL JETPORT (P^{WM})

RNP APCH.	MALSR 	MISSED APPROACH: Climb to 3000 direct BUXTO and hold, continue climb-in-hold to 3000.
<p>⚠ For uncompensated Baro-VNAV systems, LNAV/VNAV NA below -18°C or above 54°C. For inop MALSR, increase LNAV/VNAV all Cats visibility to 1½ mile, increase LNAV Cat C/D visibility to 1¾ mile. **RVR 1800 authorized with use of FD or AP or HUD to DA.</p>		

ATIS 119.05	PORTLAND APP CON * 119.75 269.35	PORTLAND TOWER * 120.9 (CTAF) 257.8	GND CON 121.9	UNICOM 122.95
-----------------------	--	--	-------------------------	-------------------------



ELEV 76	D	TDZE 56
---------	----------	---------



3000	BUXTO	4 NM Holding Pattern			
* LNAV only		* 1.5 NM to RWY29		GP 3.00° TCH 50	
1.5 NM	3.5 NM	5.8 NM			
CATEGORY	A	B	C	D	
LPV DA	** 256/24 200 (200-½)				
LNAV/VNAV DA	567-1¾ 511 (500-1¾)				
LNAV MDA	580/24	524 (600-½)	580/55	524 (600-1)	
CIRCLING	620-1 544 (600-1)	640-1 564 (600-1)	740-1¾ 664 (700-1¾)	860-2½ 784 (800-2½)	

TDZL/RCLS Rwy 11 **1**
 MIRL Rwy 18-36 **1**
 HIRL Rwy 11-29 **1**
 REIL Rws 18 and 36 **1**

NE-1, 14 MAY 2026 to 11 JUN 2026

NE-1, 14 MAY 2026 to 11 JUN 2026