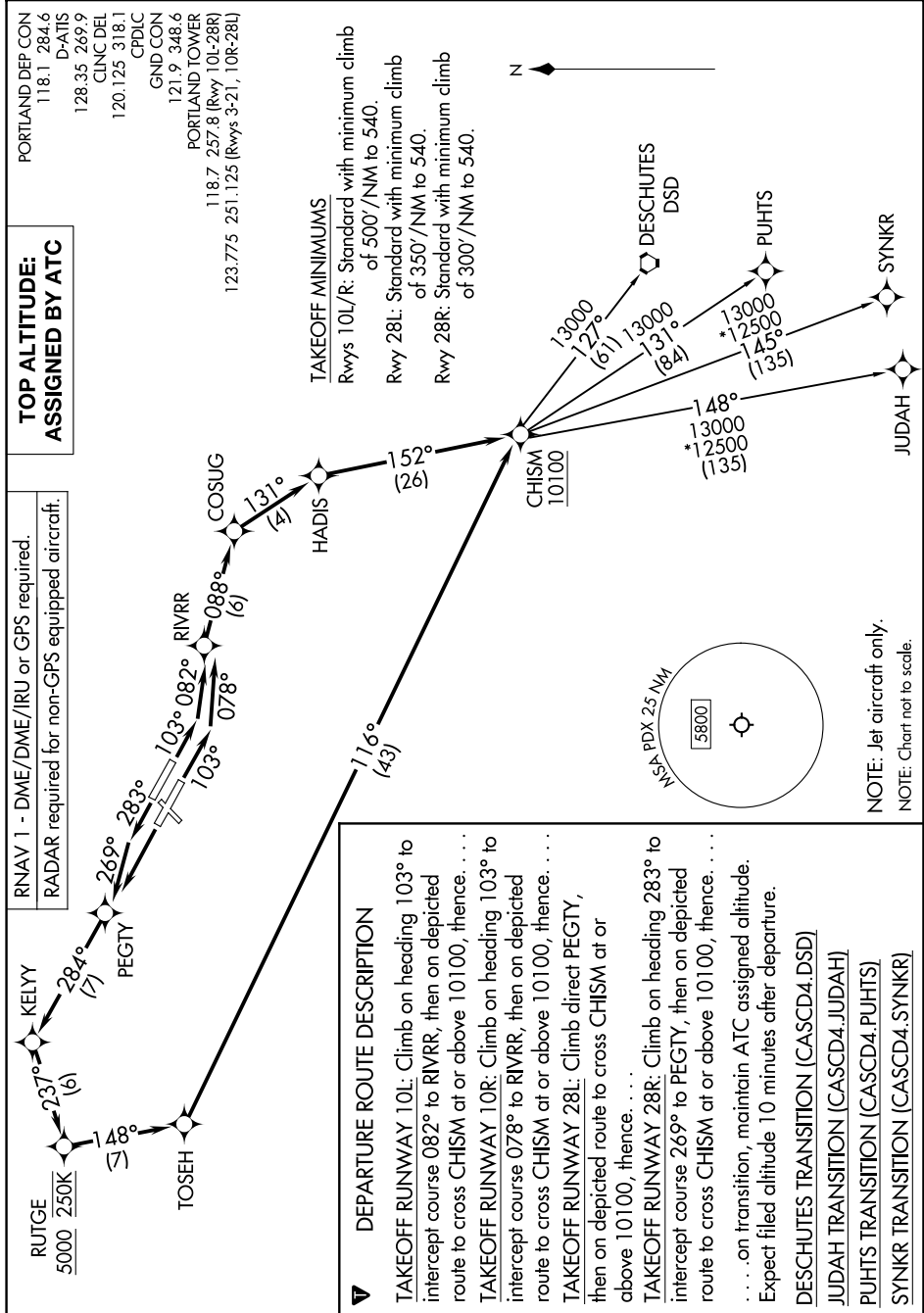


# CASCADE FOUR DEPARTURE (RNAV)

AL-330 (FAA)

PORTLAND INTL (PDX)  
PORTLAND, OREGON

NW-1, 14 MAY 2026 to 11 JUN 2026



**TOP ALTITUDE:  
ASSIGNED BY ATC**

RNAV 1 - DME/DME/IRU or GPS required.  
RADAR required for non-GPS equipped aircraft.

PORTLAND DEP CON  
118.1 284.6  
D-ATIS  
128.35 269.9  
CLNC DEL  
120.125 318.1  
CPDLC  
GND CON  
121.9 348.6  
PORTLAND TOWER  
118.7 257.8 (Rwy 10L-28R)  
123.775 251.125 (Rwys 3-21, 10R-28L)

**TAKEOFF MINIMUMS**  
 Rwys 10L/R: Standard with minimum climb of 500'/NM to 540.  
 Rwy 28L: Standard with minimum climb of 350'/NM to 540.  
 Rwy 28R: Standard with minimum climb of 300'/NM to 540.

### ▼ DEPARTURE ROUTE DESCRIPTION

**TAKEOFF RUNWAY 10L:** Climb on heading 103° to intercept course 082° to RIVRR, then on depicted route to cross CHISM at or above 10100, thence. . . .

**TAKEOFF RUNWAY 10R:** Climb on heading 103° to intercept course 078° to RIVRR, then on depicted route to cross CHISM at or above 10100, thence. . . .

**TAKEOFF RUNWAY 28L:** Climb direct PEGTY, then on depicted route to cross CHISM at or above 10100, thence. . . .

**TAKEOFF RUNWAY 28R:** Climb on heading 283° to intercept course 269° to PEGTY, then on depicted route to cross CHISM at or above 10100, thence. . . .

. . . on transition, maintain ATC assigned altitude. Expect filed altitude 10 minutes after departure.

- DESCHUTES TRANSITION (CASCD4.DSD)
- JUDAH TRANSITION (CASCD4.JUDAH)
- PUHTS TRANSITION (CASCD4.PUHTS)
- SYNKR TRANSITION (CASCD4.SYNKR)

NOTE: Jet aircraft only.  
NOTE: Chart not to scale.

NW-1, 14 MAY 2026 to 11 JUN 2026