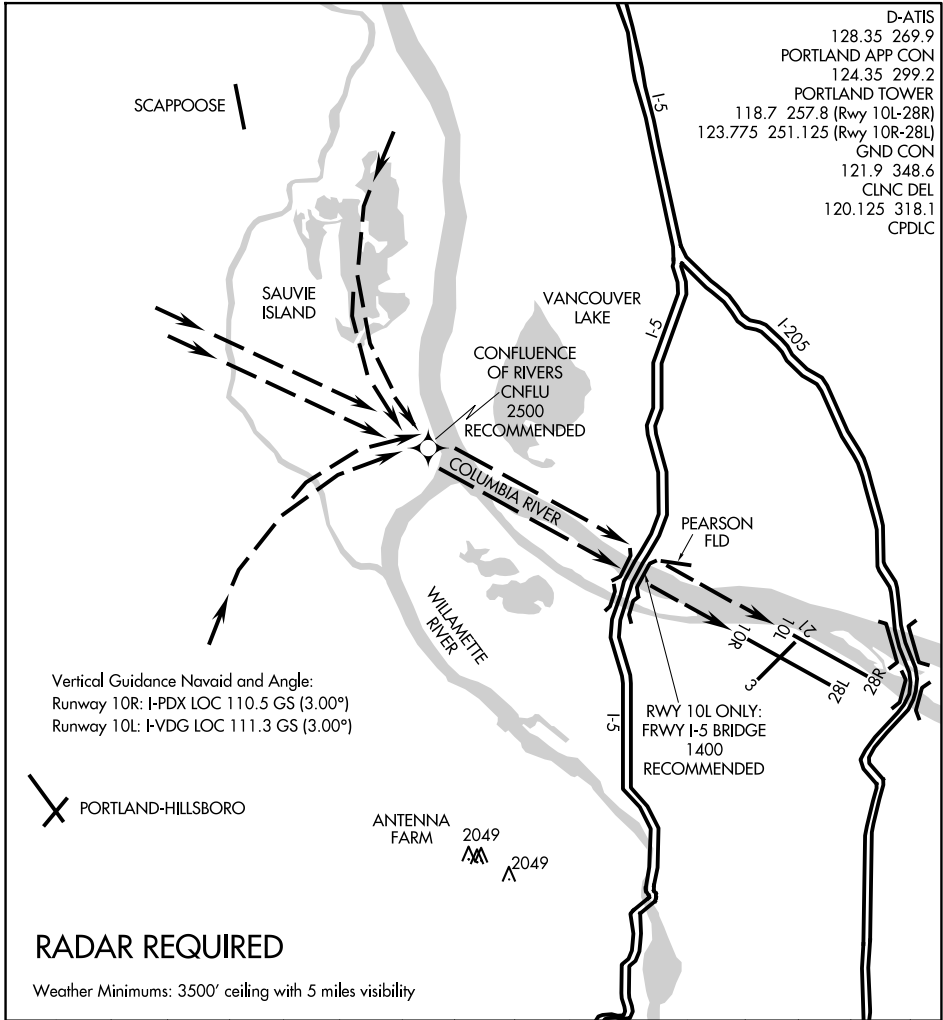


COLUMBIA VISUAL RWY 10L/R

AL-330 (FAA)

PORTLAND INTL (PDX)
PORTLAND, OREGON

D-ATIS
128.35 269.9
PORTLAND APP CON
124.35 299.2
PORTLAND TOWER
118.7 257.8 (Rwy 10L-28R)
123.775 251.125 (Rwy 10R-28L)
GND CON
121.9 348.6
CLNC DEL
120.125 318.1
CPDLC



NW-1, 14 MAY 2026 to 11 JUN 2026

NW-1, 14 MAY 2026 to 11 JUN 2026

RADAR REQUIRED

Weather Minimums: 3500' ceiling with 5 miles visibility

1	2	3	4	5	6	7	8	9	10	11	12	13	14	15	16
---	---	---	---	---	---	---	---	---	----	----	----	----	----	----	----

COLUMBIA VISUAL RWY 10L/R
PROCEDURE NOT AUTHORIZED AT NIGHT

COLUMBIA VISUAL RWY 10L/R

Amdt 3 02MAY13

45°35'N-122°36'W

PORTLAND, OREGON
PORTLAND INTL (PDX)