

HHOOD SIX ARRIVAL (RNAV)  
(HHOOD.HHOOD6) 19MAR26

Transition Routes

PORTLAND, OREGON  
PORTLAND INTL (PDX)

PORTLAND APP CON  
124.35 299.2  
D-ATIS  
128.35 269.9  
GND CON  
121.9 348.6  
PORTLAND TOWER  
118.7 257.8 (10L-28R)  
123.775 251.125 (3-21, 10R-28L)

RNAV 1 - DME/DME/IRU or GPS.  
RADAR required.

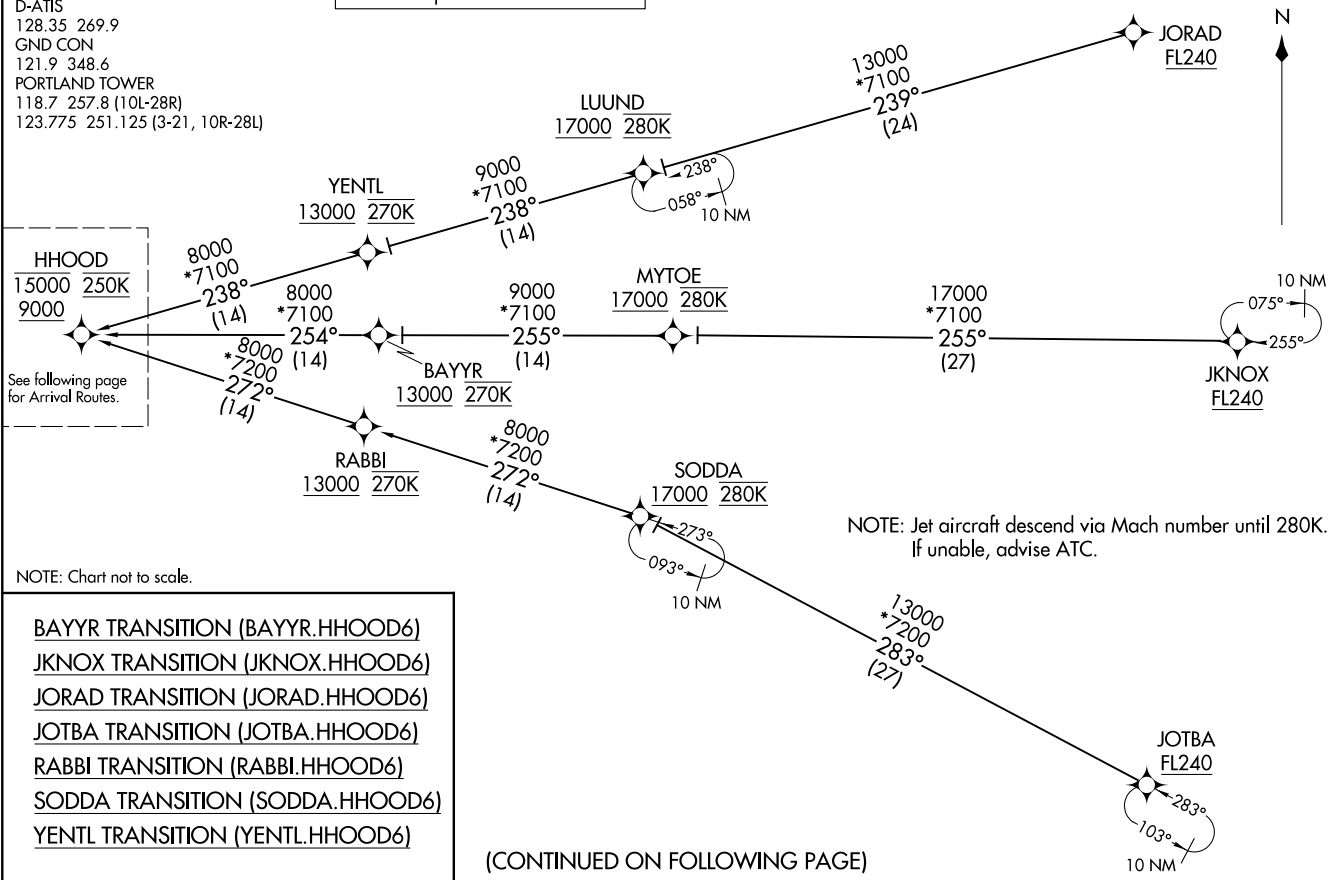
HHOOD  
15000 250K  
9000

See following page  
for Arrival Routes.

NOTE: Chart not to scale.

- BAYYR TRANSITION (BAYYR.HHOOD6)
- JKNOX TRANSITION (JKNOX.HHOOD6)
- JORAD TRANSITION (JORAD.HHOOD6)
- JOTBA TRANSITION (JOTBA.HHOOD6)
- RABBI TRANSITION (RABBI.HHOOD6)
- SODDA TRANSITION (SODDA.HHOOD6)
- YENTL TRANSITION (YENTL.HHOOD6)

(CONTINUED ON FOLLOWING PAGE)



NOTE: Jet aircraft descend via Mach number until 280K.  
If unable, advise ATC.

HHOOD.HHOOD6) 26078  
HHOOD SIX ARRIVAL (RNAV)

Transition Routes

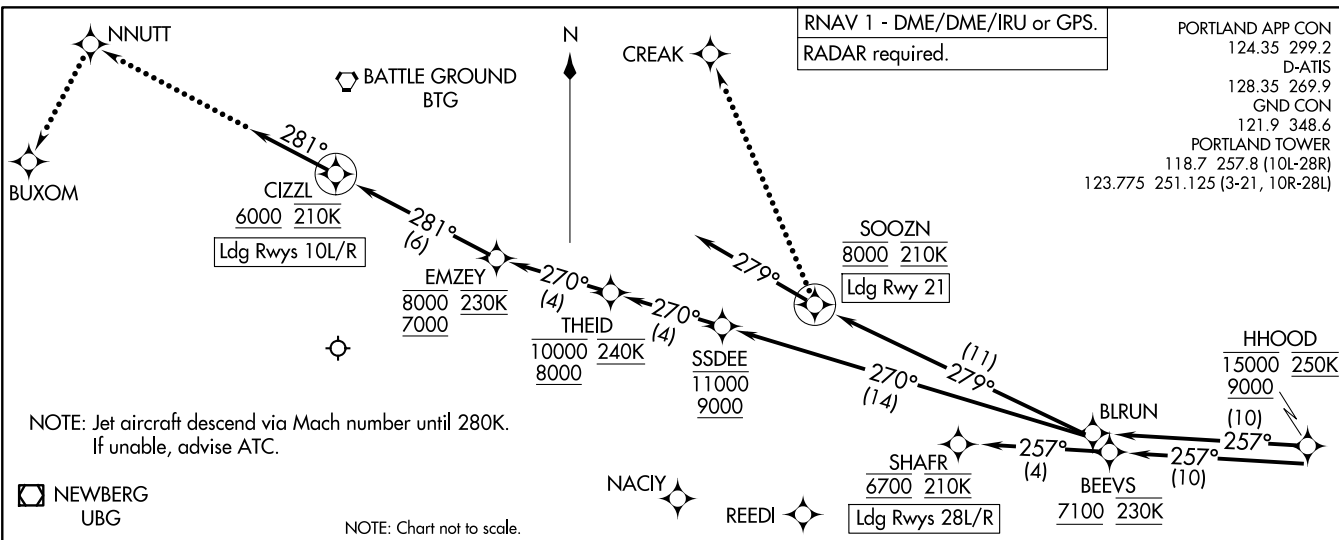
PORTLAND INTL (PDX)  
PORTLAND, OREGON

Alt:330 (FAA)

HHOOD SIX ARRIVAL (RNAV)  
(HHOOD.HHOOD6) 19MAY26

Arrival Routes

PORTLAND, OREGON  
PORTLAND INTL (PDX)



(HHOOD.HHOOD6) 26078  
HHOOD SIX ARRIVAL (RNAV)

Arrival Routes

PORTLAND INTL (PDX)  
PORTLAND, OREGON

AL-330 (FAA)

**ARRIVAL ROUTE DESCRIPTION**

**LANDING RUNWAYS 10L/R:** From HHOOD on track 257° to BLRUN, then on track 270° to cross SSDEE between 9000 and 11000, then on track 270° to cross THEID between 8000 and 10000 and at 240K, then on track 270° to cross EMZEY between 7000 and 8000 and at 230K, then on track 281° to cross CIZZL at or above 6000 and at 210K, then on track 281°. Expect RNP Rwy 10L/R approach or RADAR vectors to final approach course.

**LANDING RUNWAY 21:** From HHOOD on track 257° to BLRUN, then on track 279° to cross SOOZN at 8000 and at 210K, then on track 279°. Expect RADAR vectors to final approach course.

**LANDING RUNWAYS 28L/R:** From HHOOD on track 257° to cross BEEVS at or above 7100 and at 230K, then on track 257° to cross SHAFR at 6700 and at 210K. Expect RNAV or ILS RWY 28L/R approach.

**LOST COMMUNICATIONS**

Follow published crossing altitudes and then maintain lowest Rwy transition altitude until established on approach procedure.

**RUNWAYS 10L/R:** After CIZZL proceed to NNUTT, then turn left to BUXOM and proceed on the ILS RWY 10L approach.

**RUNWAY 21:** After SOOZN turn right to CREAK and proceed on the LOC/DME RWY 21 approach.

**RUNWAYS 28L/R:** After SHAFR proceed on the ILS or LOC RWY 28R approach.