

PORTLAND, OREGON


HI-ILS or LOC RWY 28R

LOC/DME I-IAP 111.3 Chan 50	APCH CRS 283°	Rwy Idg TDZE Arpt Elev 9290 31 31
---	-------------------------	---

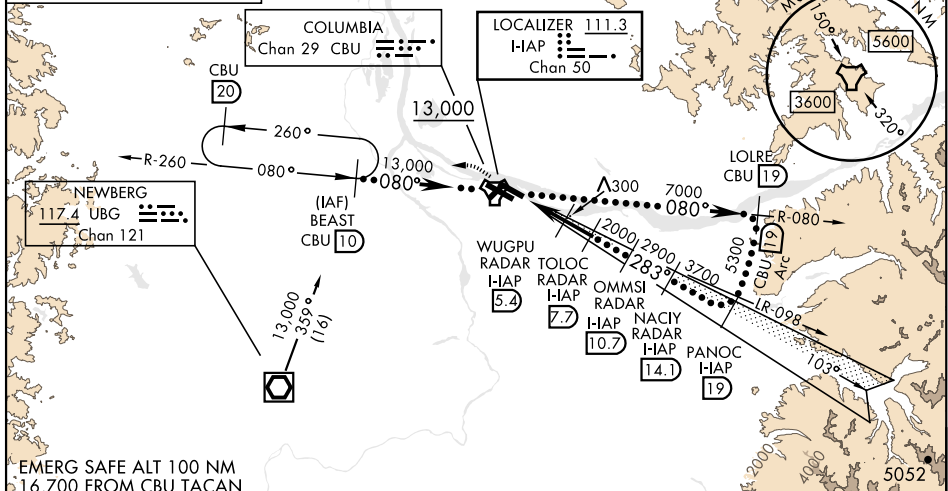
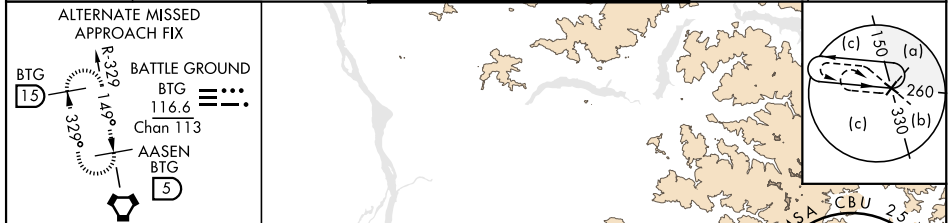
[USAF]

PORTLAND INTL (KPDX)

RADAR or DME required.

MALSIR  MISSED APPROACH: Climb to 600 then climbing left turn to 4000 on CBU TACAN R-260 to BEAST/ CBU 10 DME and hold, continue climb in holding to 4000.

ATIS 128.35 269.9	APP CON 118.1 284.6 (100°-279°) 124.35 299.2 (280°-099°)	TOWER 118.7 257.8 Rwy 10L-28R 123.775 251.125 Rwy 3-21, 10R-28L	GND CON 121.9 348.6	CLNC DEL 120.125 318.1
-----------------------------	--	---	-------------------------------	----------------------------------



EMERG SAFE ALT 100 NM
16,700 FROM CBU TACAN

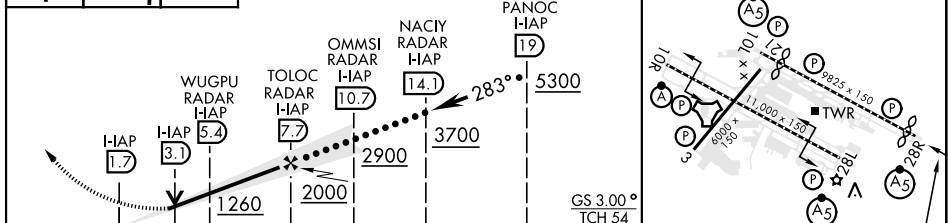
600 4000 BEAST CBU R-260

VGSI and ILS glidepath not coincident (VGSI Angle 3.00/TCH 70).

Use I-IAP DME when on LOC course.

ELEV 31 TDZE 31

Rwy 10L Idg 8535'
Rwy 28R Idg 9290'



CATEGORY	C	D	E
S-ILS 28R *	281/24	250	(300-½)
S-LOC 28R **	560/55	529	(600-1)
CIRCLING	1060-3	1029	(1100-3)
			1140-3 1109 (1200-3)

FAF to MAP 6 NM					
Knots	120	140	160	180	200
Min:Sec	3:00	2:34	2:15	2:00	1:48

REIL Rwy 3 and 21
TDZL/CL Rwy 10R
MIRL Rwy 3-21
HIRL Rwy 10L-28R and 10R-28L

PORTLAND, OREGON
Amdt 4A 21MAR24

45°35'N-122°36'W

PORTLAND INTL (KPDX)

HI-ILS or LOC RWY 28R

NW-1, 14 MAY 2026 to 11 JUN 2026

NW-1, 14 MAY 2026 to 11 JUN 2026