

HI-TACAN RWY 10R

TACAN CBU Chan 29	APCH CRS 111°	Rwy ldg 11,000 TDZE 24 Arpt Elev 31
-----------------------------	-------------------------	--

[USAF]

PORTLAND INTL (KPDX)

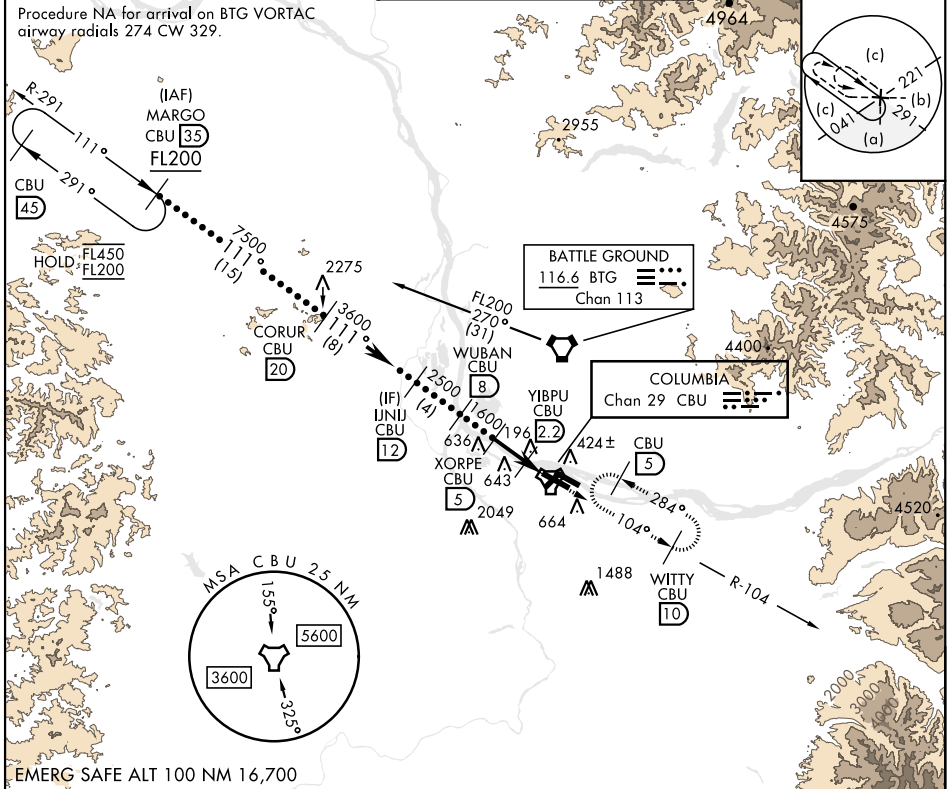
▼ * When ALS inop, increase CAT E vis to 1 1/4 miles.



MISSED APPROACH: Climb to 4000 on CBU TACAN R-104 to WITTY/CBU 10 DME and hold, continue climb-in-hold to 4000.

ATIS 128.35 269.9	APP CON 118.1 284.6 (100°-279°) 124.35 299.2 (280°-099°)	TOWER 118.7 257.8 Rwy 10L-28R 123.775 251.125 Rwy 3-21, 10R-28L	GND CON 121.9 348.6	CLNC DEL 120.125 318.1
-----------------------------	--	---	-------------------------------	----------------------------------

Procedure NA for arrival on BTG VORTAC airway radials 274 CW 329.



NW-1, 14 MAY 2026 to 11 JUN 2026

NW-1, 14 MAY 2026 to 11 JUN 2026

<p>EMERG SAFE ALT 100 NM 16,700</p>		<p>VGSI and ILS glidepath not coincident (VGSI Angle 3.00/TCH 71)</p>		<p>4000 CBU R-104</p>	<p>WITTY CBU 10</p>	<p>ELEV 31</p>	<p>TDZE 24</p>
<p>MARGO 35 FL200 711°</p>		<p>CORUR 20 7500</p>		<p>UNJU 12 3600</p>		<p>WUBAN 8 2500</p>	
<p>3.21° TCH 71</p>		<p>XORPE 5 1600</p>		<p>YIBPU 2.2 640</p>		<p>TACAN 0.6</p>	
<p>4.4 NM</p>		<p>4000</p>		<p>WITTY</p>		<p>111°</p>	
<p>REIL Rwy 3, 21</p>		<p>TDZL/CL Rwy 10R</p>		<p>MIRL Rwy 3-21</p>		<p>HIRL Rwy 10L-28R, 28L-10R</p>	

HI-TACAN RWY 10R

