


LOC/DME I-VDG 111.3 Chan 50	APP CRS 103°	Rwy Ldg 8535 TDZE 30 Apt Elev 31
---	------------------------	---

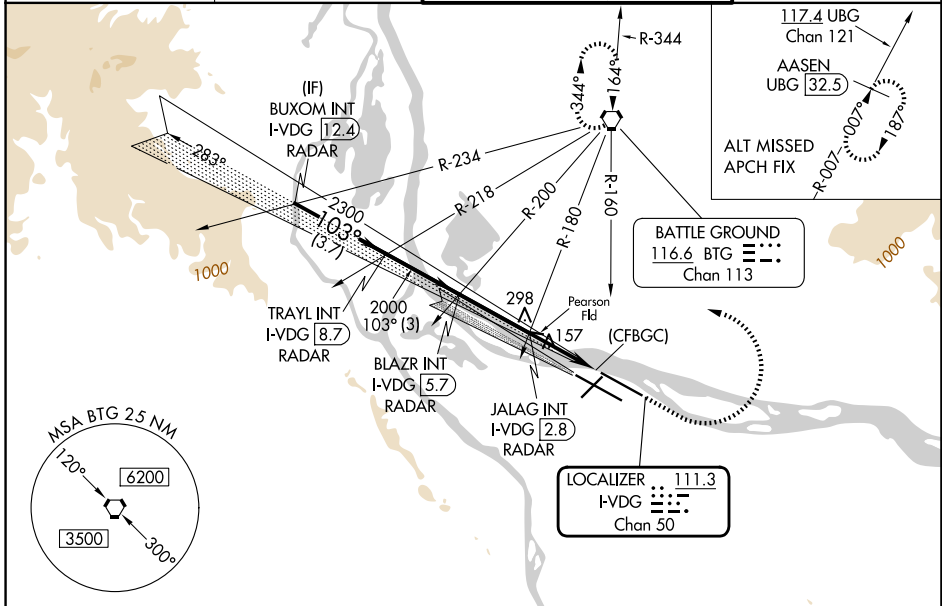
ILS or LOC RWY 10L

PORTLAND INTL (PDX)

⚠ Simultaneous approach authorized with Rwy 10R.
⚠ For inoperative MALS/R, increase S-ILS visibility all Cats to RVR 4500.
 S-LOC Cat E visibility to RVR 6000. RADAR or DME required.

MALS/R

MISSED APPROACH: Climb to 800 then climbing left turn to 4200 on BTG VORTAC R-160 to BTG VORTAC and hold, continue climb-in-hold to 4200.

D-ATIS 128.35 269.9	PORTLAND APP CON 124.35 299.2	PORTLAND TOWER 118.7 257.8 (10L-28R) 123.775 251.125 (3-21, 10R-28L)	GND CON 121.9 348.6
-------------------------------	---	--	-------------------------------

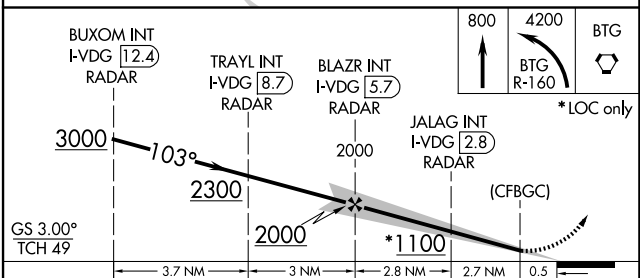
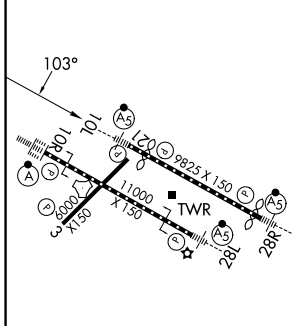


NW-1, 14 MAY 2026 to 11 JUN 2026

NW-1, 14 MAY 2026 to 11 JUN 2026

ELEV 31	D	TDZE 30
---------	----------	---------

RADAR REQUIRED



REIL Rws 3 and 21
 TDZL/RCLS Rwy 10R
 MIRL Rwy 3-21
 HIRL Rws 10L-28R and 10R-28L
 FAF to MAP 5.6 NM

Knots	60	90	120	150	180
Min:Sec	5:36	3:44	2:48	2:14	1:52

CATEGORY	A	B	C	D	E
S-ILS 10L	293/24		263 (300-½)		
S-LOC 10L	420/24		390 (400-½)		420/35 390 (400-⅝)
CIRCLING	720-1 689 (700-1)		760-1 729 (800-1)		1060-3 1029 (1100-3) 1140-3 1109 (1200-3)