

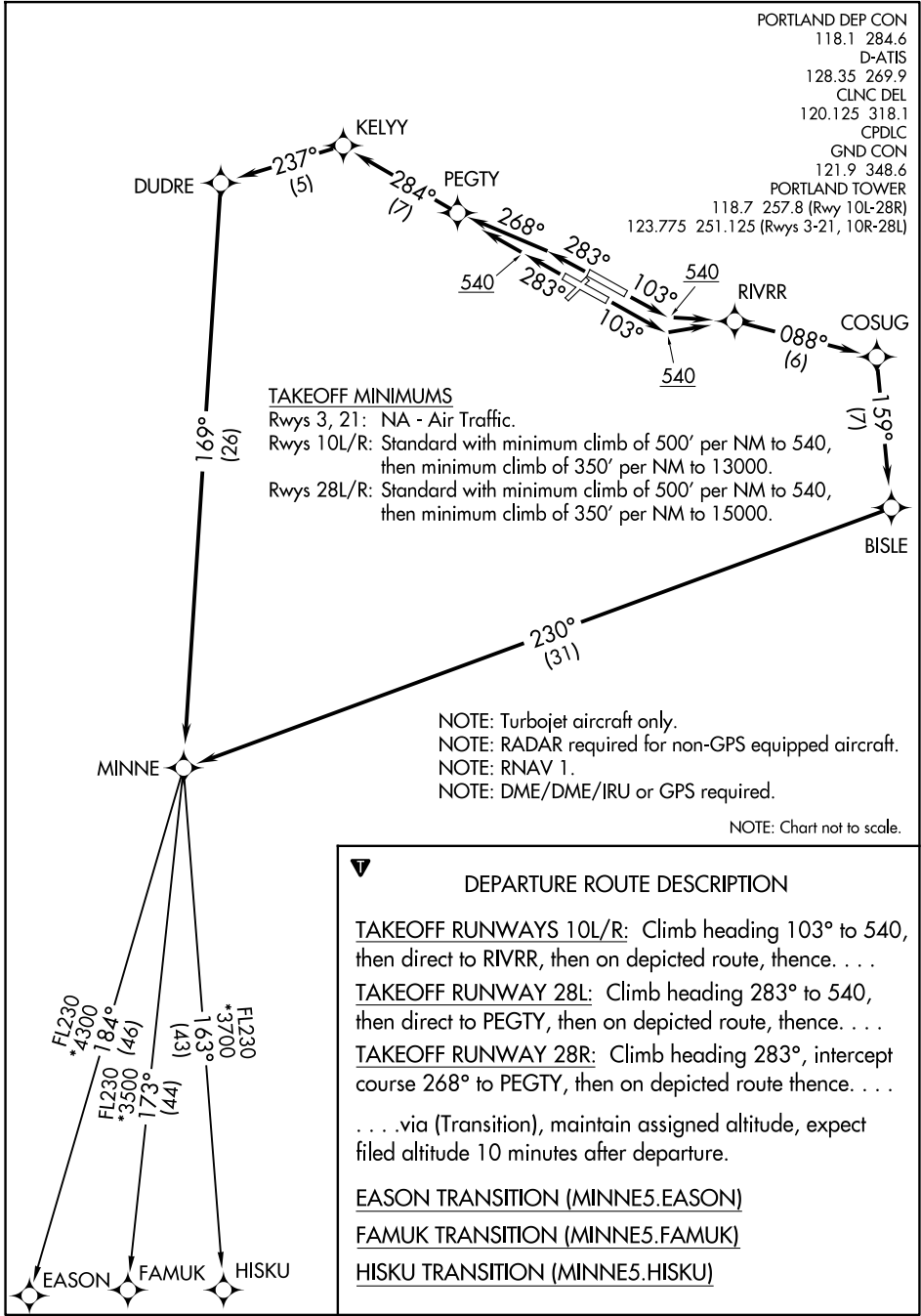
MINNE FIVE DEPARTURE (RNAV)

AL-330 (FAA)

PORTLAND INTL (PDX)
PORTLAND, OREGON

NW-1, 14 MAY 2026 to 11 JUN 2026

NW-1, 14 MAY 2026 to 11 JUN 2026



PORTLAND DEP CON
 118.1 284.6
 D-ATIS
 128.35 269.9
 CLNC DEL
 120.125 318.1
 CPDLC
 GND CON
 121.9 348.6
 PORTLAND TOWER
 118.7 257.8 (Rwy 10L-28R)
 123.775 251.125 (Rwys 3-21, 10R-28L)

TAKEOFF MINIMUMS

Rwy 3, 21: NA - Air Traffic.
 Rwy 10L/R: Standard with minimum climb of 500' per NM to 540, then minimum climb of 350' per NM to 13000.
 Rwy 28L/R: Standard with minimum climb of 500' per NM to 540, then minimum climb of 350' per NM to 15000.

NOTE: Turbojet aircraft only.
 NOTE: RADAR required for non-GPS equipped aircraft.
 NOTE: RNAV 1.
 NOTE: DME/DME/IRU or GPS required.

NOTE: Chart not to scale.

MINNE FIVE DEPARTURE (RNAV)

(MINNE5.MINNE) 08JAN15

PORTLAND, OREGON
PORTLAND INTL (PDX)