

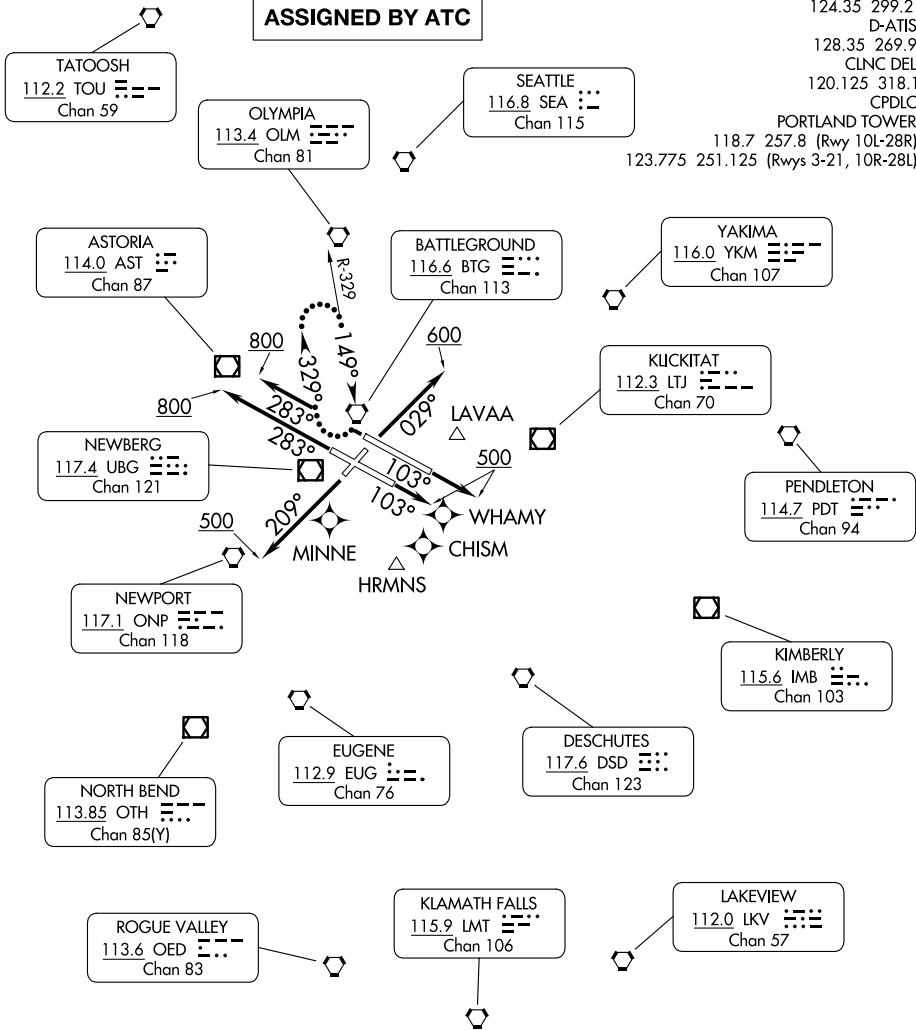
PORTLAND TWO DEPARTURE

AL-330 (FAA)

PORTLAND INTL (PDX)
PORTLAND, OREGON

**TOP ALTITUDE:
ASSIGNED BY ATC**

PORTLAND DEP CON
124.35 299.2
D-ATIS
128.35 269.9
CLNC DEL
120.125 318.1
CPDLC
PORTLAND TOWER
118.7 257.8 (Rwy 10L-28R)
123.775 251.125 (Rwys 3-21, 10R-28L)



TAKEOFF MINIMUMS

- Rwy 3: Standard with minimum climb of 375' per NM to 5300.
- Rwy 10L: Standard with minimum climb of 350' per NM to 5900.
- Rwy 10R: Standard with minimum climb of 400' per NM to 5000.
- Rwy 21: Standard with minimum climb of 430' per NM to 4000.
- Rwy 28L: Standard with minimum climb of 375' per NM to 4500.
- Rwy 28R: Standard with minimum climb of 340' per NM to 5400.

NOTE: RADAR required.

NOTE: Chart not to scale.

(CONTINUED ON FOLLOWING PAGE)

PORTLAND TWO DEPARTURE

PORTLAND, OREGON
PORTLAND INTL (PDX)

NW-1, 14 MAY 2026 to 11 JUN 2026

NW-1, 14 MAY 2026 to 11 JUN 2026



DEPARTURE ROUTE DESCRIPTION

TAKEOFF RUNWAY 3: Climb heading 029° to 600, thence. . . .

TAKEOFF RUNWAY 10L: Climb heading 103° to 500, thence. . . .

TAKEOFF RUNWAY 10R: Climb heading 103° to 500, thence. . . .

TAKEOFF RUNWAY 21: Climb heading 209° to 500, thence. . . .

TAKEOFF RUNWAY 28L: Climb heading 283° to 800, thence. . . .

TAKEOFF RUNWAY 28R: Climb heading 283° to 800, thence. . . .

. . . . climb on assigned heading for RADAR vectors to assigned route/fix.
Maintain assigned altitude, expect filed altitude five minutes after departure.

LOST COMMUNICATIONS: If no contact with ATC within 10 NM of airport, continue climb to assigned altitude and proceed direct BTG VORTAC. Climb in BTG VORTAC holding pattern to cross BTG VORTAC at or above MCA/MEA before proceeding on course.

NW-1, 14 MAY 2026 to 11 JUN 2026

NW-1, 14 MAY 2026 to 11 JUN 2026