


RNAV (RNP) Y RWY 28L

PORTLAND INTL (PDX)

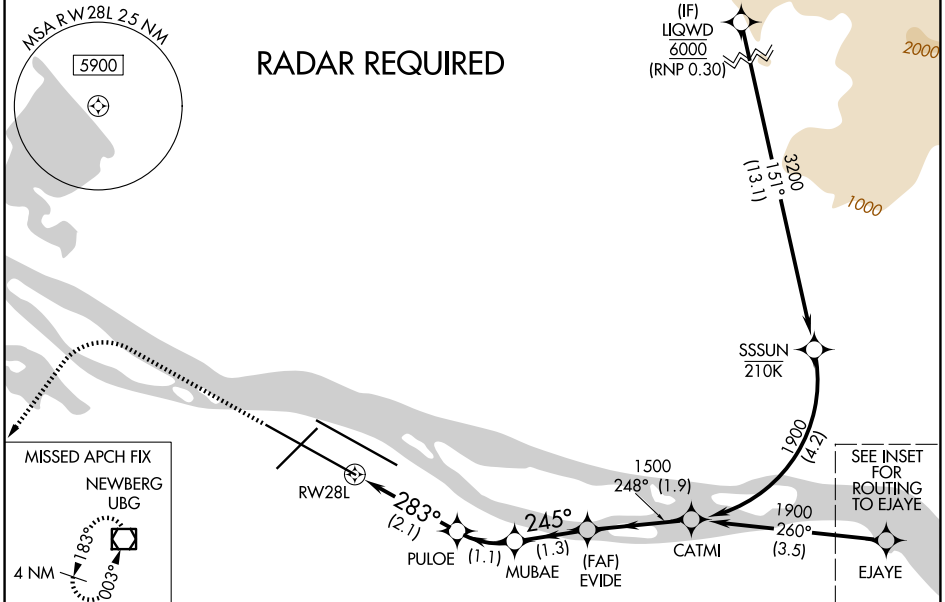
APP CRS 283°	Rwy Ldg 11000 TDZE 23 Apt Elev 31
------------------------	--

▼ For uncompensated Baro-VNAV systems, procedure NA below -7°C (20°F) or above 54°C (130°F). For inop MALSR, increase RNP 0.23 all Cats visibility to RVR 5600 and increase RNP 0.30 all Cats visibility to 1½ mile. Simultaneous approach authorized with Rwy 28R. RF required. GPS required. Use of FD or AP providing RNAV track guidance required during simultaneous operations.

MALSR


MISSED APPROACH: Climb to 2100 then climbing left turn to 4000 direct UBG VOR/DME and hold.

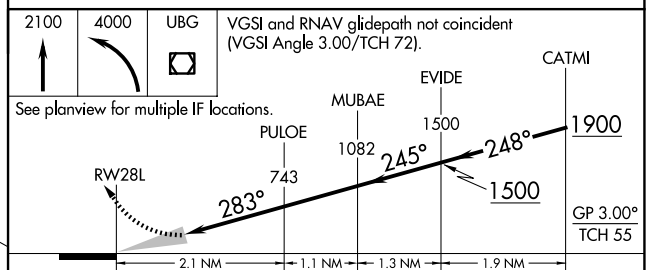
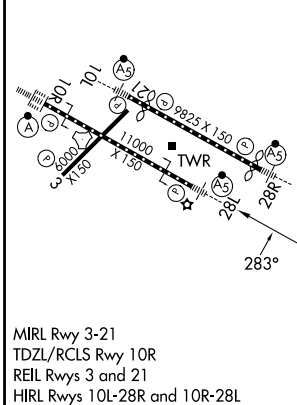
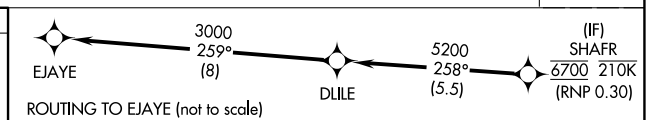
D-ATIS 128.35 269.9	PORTLAND APP CON 124.35 299.2	PORTLAND TOWER 118.7 257.8 (10L-28R) 123.775 251.125 (3-21, 10R-28L)	GND CON 121.9 348.6
-------------------------------	---	--	-------------------------------



NW-1, 14 MAY 2026 to 11 JUN 2026

NW-1, 14 MAY 2026 to 11 JUN 2026

ELEV 31	D	TDZE 23
---------	----------	---------



CATEGORY	A	B	C	D
RNP 0.23 DA		370/33	347 (400-5/8)	
RNP 0.30 DA		476/53	453 (500-1)	

AUTHORIZATION REQUIRED

RNAV (RNP) Y RWY 28L