


APP CRS <b>283°</b>	Rwy Ldg TDZE Apt Elev	<b>9290</b> <b>31</b> <b>31</b>
------------------------	-----------------------------	---------------------------------------

# RNAV (RNP) Y RWY 28R

PORTLAND INTL (PDX)

**▼** For uncompensated Baro-VNAV systems, procedure NA below -7°C (20°F) or above 54°C (130°F). For inop MALSR, increase RNP 0.20 all Cats visibility to 1 1/4 mile, and increase RNP 0.30 all Cats visibility to 1 3/8 mile. RF required. GPS required. Use of FD or AP providing RNAV track guidance required during simultaneous operations. Simultaneous approach authorized with Rwy 28L.

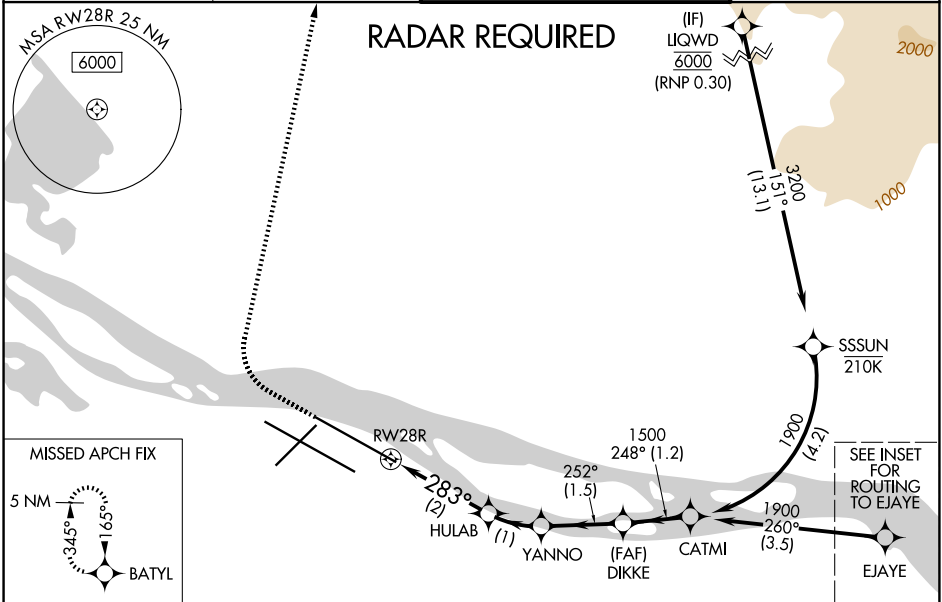
**MALSR**  
  
**MISSED APPROACH:**  
 Climb to 600 then climbing right turn to 4400 direct BATYL and hold, continue climb-in-hold to 4400.

D-ATIS  
**128.35 269.9**

PORTLAND APP CON  
**124.35 299.2**

PORTLAND TOWER  
**118.7 257.8 (10L-28R)**  
**123.775 251.125 (3-21, 10R-28L)**

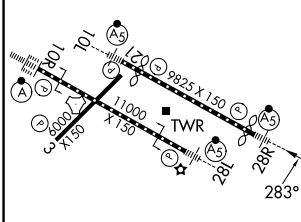
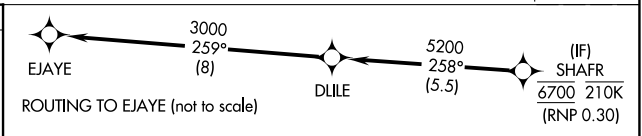
GND CON  
**121.9 348.6**



NW-1, 14 MAY 2026 to 11 JUN 2026

NW-1, 14 MAY 2026 to 11 JUN 2026

ELEV 31 **D** TDZE 31



600 4400 BATYL VGSi and RNAV glidepath not coincident (VGSi Angle 3.00/TCH 70).

See planview for multiple IF locations.

2 NM 1 NM 1.5 NM 1.2 NM

CATEGORY	A	B	C	D
RNP 0.20 DA		403/40	372 (400-3/4)	
RNP 0.30 DA		455/50	424 (500-1)	

## AUTHORIZATION REQUIRED