


APP CRS <b>283°</b>	Rwy Ldg TDZE Apt Elev	<b>9290</b> <b>31</b> <b>31</b>
------------------------	-----------------------------	---------------------------------------

# RNAV (RNP) Z RWY 28R

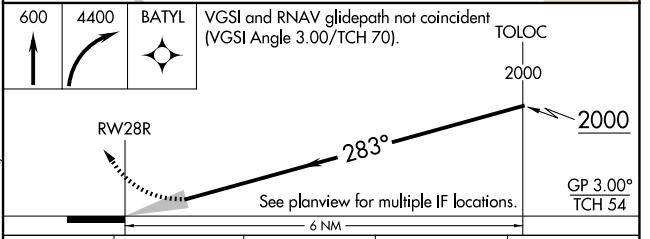
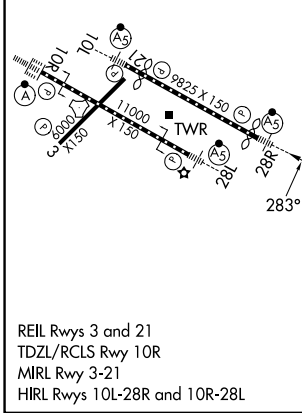
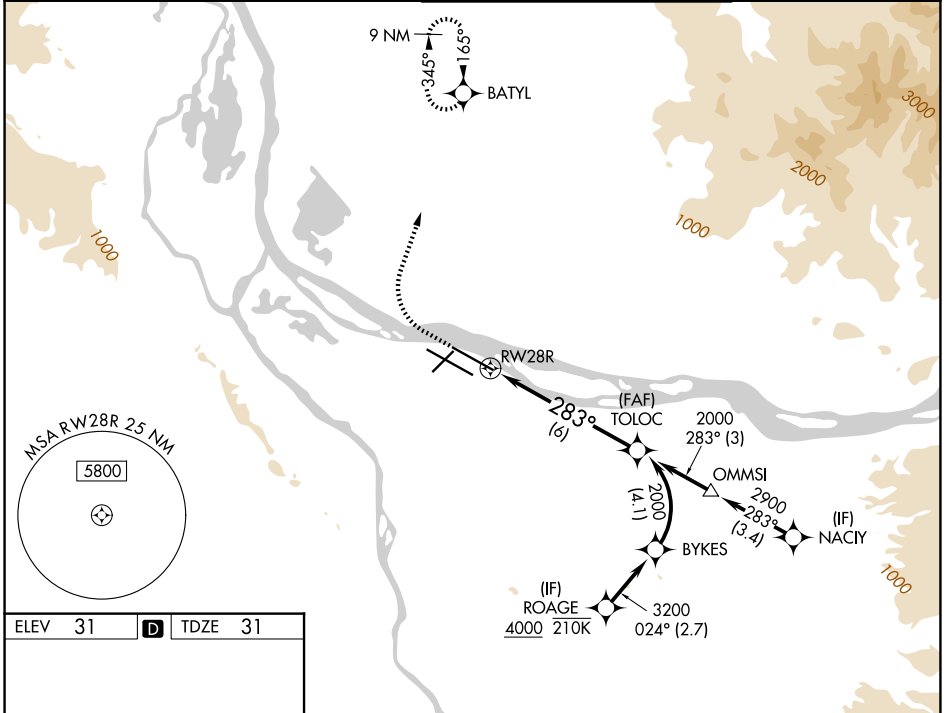
PORTLAND INTL (PDX)

RNP AR APCH - GPS. Authorization required. From BYKES: RF

▼ For uncompensated Baro-VNAV systems, procedure NA below -5°C or above 54°C. Simultaneous approach authorized. For inop ALS increase RNP 0.10 all Cats visibility to RVR 4500, increase RNP 0.20 all Cats visibility to RVR 5500, and increase RNP 0.30 all Cats visibility to RVR 6000.

MALSR  MISSED APPROACH: Climb to 600 then climbing right turn to 4400 direct BATYL and hold, continue climb-in-hold to 4400.

D-ATIS <b>128.35 269.9</b>	PORTLAND APP CON <b>124.35 299.2</b>	PORTLAND TOWER <b>118.7 257.8</b> (10L-28R) <b>123.775 251.125</b> (3-21, 10R-28L)	GND CON <b>121.9 348.6</b>
-------------------------------	---	--	-------------------------------



CATEGORY	A	B	C	D
RNP 0.10 DA		322/24	291 (300-½)	
RNP 0.20 DA		400/35	369 (400-¾)	
RNP 0.30 DA		451/40	420 (500-¾)	

**AUTHORIZATION REQUIRED**

NW-1, 14 MAY 2026 to 11 JUN 2026

NW-1, 14 MAY 2026 to 11 JUN 2026