


WAAS CH 56205 W28B	APP CRS 283°	Rwy Ldg 11000 TDZE 23 Apt Elev 31
--	------------------------	--

RNAV (GPS) X RWY 28L

PORTLAND INTL (PDX)

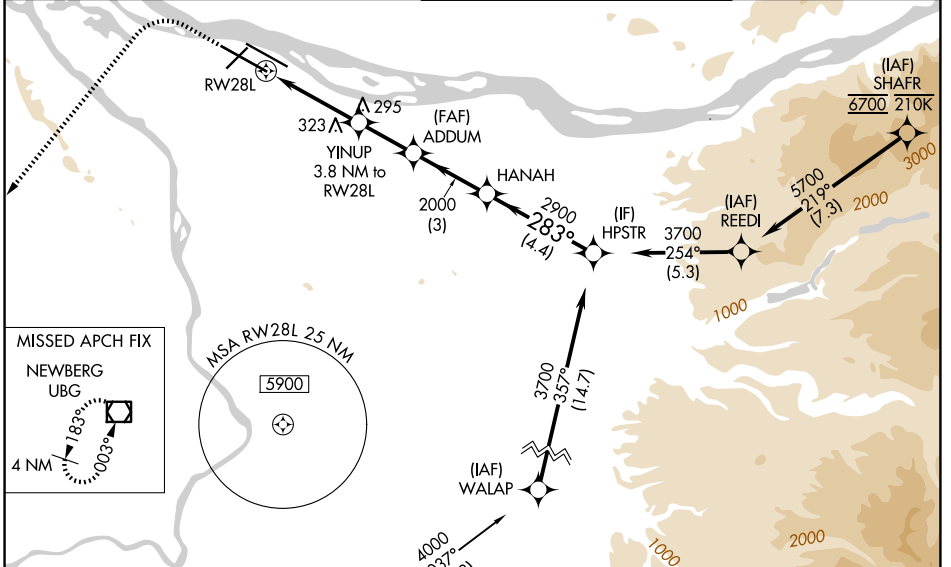
⚠ For uncompensated Baro-VNAV systems, LNAV/VNAV NA below -6°C (22°F) or above 54°C (130°F). Simultaneous approach authorized. LNAV procedure NA during simultaneous operations. DME/DME RNP-0.3 NA. Use of FD or AP providing RNAV track guidance required during simultaneous operations. For inop ALS, increase LNAV Cat C/D visibility to 1½ SM.

MALSRL



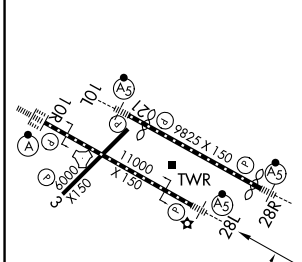
MISSED APPROACH: Climb to 2100 then climbing left turn to 4000 direct UBG VOR/DME and hold.

D-ATIS 128.35 269.9	PORTLAND APP CON 124.35 299.2	PORTLAND TOWER 118.7 257.8 (10L-28R) 123.775 251.125 (3-21, 10R-28L)	GND CON 121.9 348.6
-------------------------------	---	--	-------------------------------



ELEV 31	D	TDZE 23
---------	----------	---------

MAVER Procedure NA for arrivals at MAVER on V448 southbound and on V165 eastbound.



2100	4000	UBG	VGSi and RNAV glidepath not coincident (VGSi Angle 3.00/TCH 72).
* INAV only			HPSTR
YINUP 3.8 NM to RW28L			HANAH
* 1.4 NM to RW28L			ADDUM
RW28L			MAVER
1280*			283°
1.4 - 2.4 NM			2900
2.2 NM			2000
3 NM			3700
4.4 NM			GP 3.00° TCH 55

	CATEGORY	A	B	C	D
LPV DA			309/22	286 (300-½)	
LNAV/VNAV DA			368/30	345 (400-⅝)	
LNAV MDA		540/24	517 (600-½)	540/55	517 (600-1)
CIRCLING		720-1 689 (700-1)	760-1 729 (800-1)	1060-3	1029 (1100-3)

REIL Rws 3 and 21
TDZL/RCLS Rwy 10R
MIRL Rwy 3-21
HIRL Rws 10L-28R and 10R-28L

NW-1, 14 MAY 2026 to 11 JUN 2026

NW-1, 14 MAY 2026 to 11 JUN 2026