

WAAS CH 60905 W28A	APP CRS 283°	Rwy Ldg TDZE Apt Elev	9290 31 31
---------------------------------	------------------------	-----------------------------	---------------------------------------

RNAV (GPS) X RWY 28R

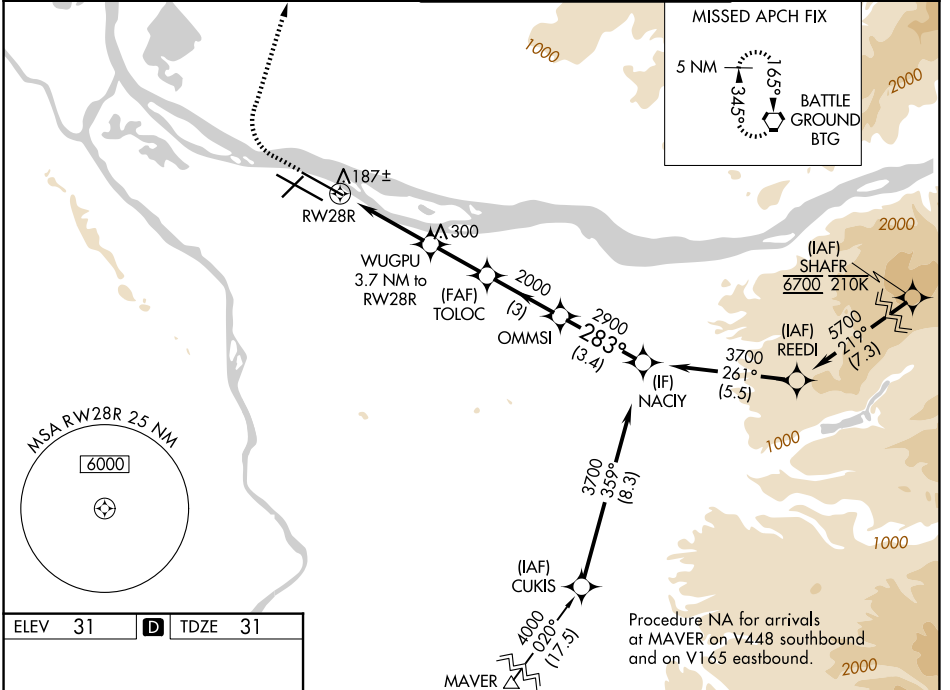
PORTLAND INTL (PDX)

⚠ For uncompensated Baro-VNAV systems, LNAV/VNAV NA below -6°C (22°F) or above 54°C (130°F). Simultaneous approach authorized. LNAV procedure NA during simultaneous operations. DME/DME RNP-0.3 NA. Use of FD or AP providing RNAV track guidance required during simultaneous operations. For inop ALS increase LNAV Cat C/D visibility to RVR 6000.

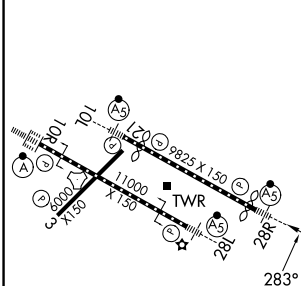
MALSR

MISSED APPROACH: Climb to 600 then climbing right turn to 4200 direct BTG VORTAC and hold, continue climb-in-hold to 4200.

D-ATIS 128.35 269.9	PORTLAND APP CON 124.35 299.2	PORTLAND TOWER 118.7 257.8 (10L-28R) 123.775 251.125 (3-21, 10R-28L)	GND CON 121.9 348.6
-------------------------------	---	--	-------------------------------



ELEV 31	D	TDZE 31
---------	----------	---------



600	4200	BTG	VGSI and RNAV glidepath not coincident (VGSI Angle 3.00/TCH 70).	NACIY
↑	↷	⬡		
*LNAV only		WUGPU 3.7 NM to RW28R	TOLOC 2000	OMMSI 2000
1.1 NM to RW28R		1260	2900	3700
RW28R		283°	GP 3.00°	TCH 54
1.1	2.6 NM	2.3 NM	3 NM	3.4 NM

CATEGORY	A	B	C	D
LPV DA		281/24	250 (300-½)	
LNAV/VNAV DA		446/45	415 (500-¾)	
LNAV MDA	440/24	409 (500-½)	440/40	409 (500-¾)
CIRCLING	720-1 689 (700-1)	760-1 729 (800-1)	1060-3	1029 (1100-3)

REIL Rwy 3 and 21
TDZL/RCLS Rwy 10R
MIRL Rwy 3-21
HIRL Rwy 10L-28R and 10R-28L

NW-1, 14 MAY 2026 to 11 JUN 2026

NW-1, 14 MAY 2026 to 11 JUN 2026