

WAAS CH <b>87012</b> <b>W01A</b>	APP CRS <b>003°</b>	Rwy Ldg TDZE Apt Elev	<b>7441</b> <b>479</b> <b>534</b>
--	------------------------	-----------------------------	---

# RNAV (GPS) RWY 1

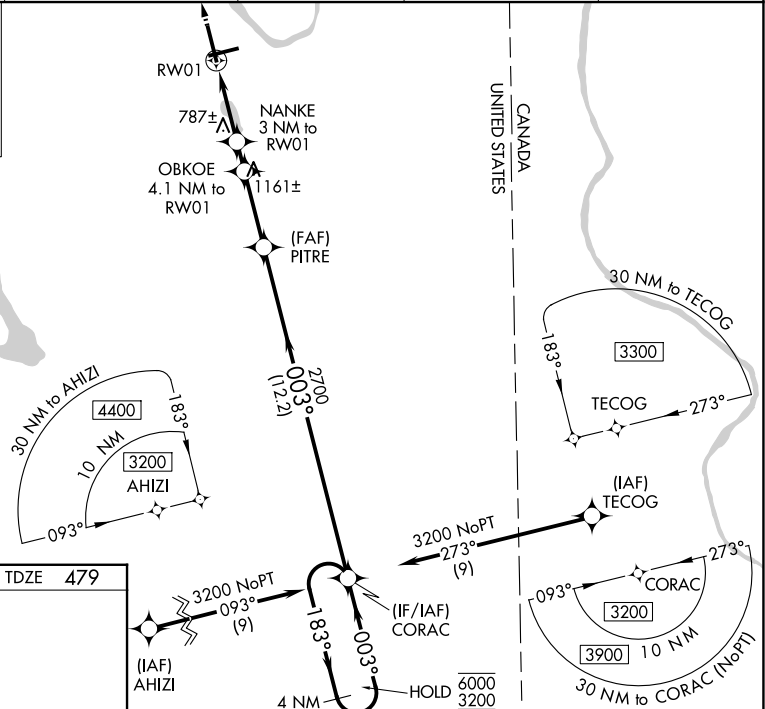
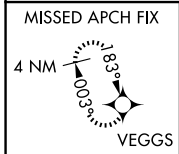
PRESQUE ISLE INTL (PQI)

RNP APCH - GPS.

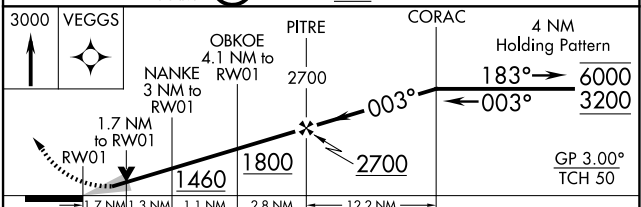
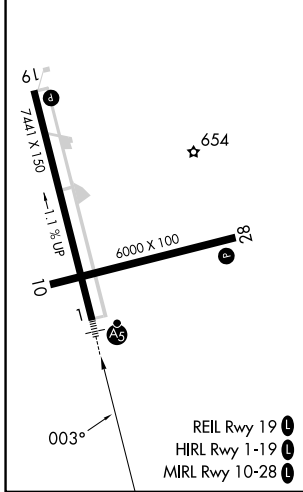
**⚠** For uncompensated Baro-VNAV systems, LNAV/VNAV NA below -16°C or above 54°C. For inop ALS, increase LNAV/VNAV all Cats visibility to 1½ SM and LNAV Cats C and D to 1½ SM. Circling Rwy 10 NA at night. When local altimeter setting not received, use HUL altimeter setting: increase LPV DA to 769 feet; increase LNAV/VNAV DA to 1062 feet and all visibilities ¼ SM; increase all MDAs 100 feet and LNAV visibility Cats C and D ¼ SM, and Circling visibility Cat C ½ SM and Cat D ¼ SM. Baro-VNAV and VDP NA when using HUL altimeter setting. For inop ALS when using HUL altimeter setting, increase LPV all Cats visibility to ¾ SM, and LNAV Cats C and D to 1 ½ SM.

**MALSR**  
**A5**  
MISSED APPROACH:  
Climb to 3000 direct  
VEGGS and hold.

AWOS-3PT <b>118.025</b>	BOSTON CENTER <b>124.75 239.05</b>	CLNC DEL <b>121.6</b>	UNICOM <b>122.8 (CTAF)</b>	<b>122.6</b>
----------------------------	---------------------------------------	--------------------------	-------------------------------	--------------



ELEV 534	<b>D</b>	TDZE 479
----------	----------	----------



VEGGS	OBKOE 4.1 NM to RW01	PITRE 2700	CORAC	4 NM Holding Pattern
	NANKE 3 NM to RW01			6000 3200
				GP 3.00° TCH 50
CATEGORY	A	B	C	D
LPV DA		679-½	200 (200-½)	
LNAV/VNAV DA		972-1	493 (500-1)	
LNAV MDA	1040-½	561 (600-½)	1040-1¼	561 (600-1¼)
CIRCLING	1180-1	646 (700-1)	1320-2¼	1380-2¾
			786 (800-2¼)	846 (900-2¾)

NE-1, 14 MAY 2026 to 11 JUN 2026

NE-1, 14 MAY 2026 to 11 JUN 2026