

WAAS CH 99712 W19A	APP CRS 183°	Rwy Ldg TDZE Apt Elev	7441 534 534
--	------------------------	-----------------------------	---

RNAV (GPS) RWY 19

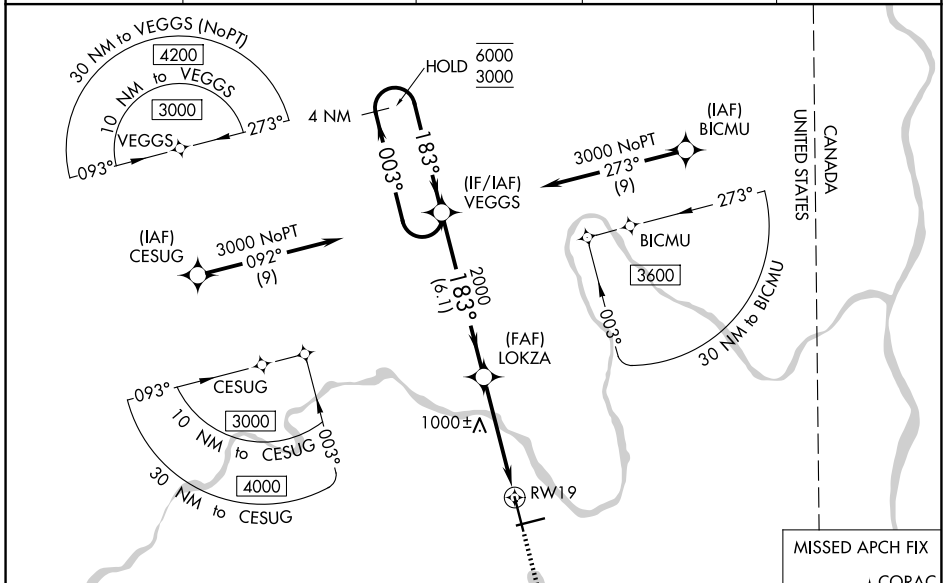
PRESQUE ISLE INTL (PQI)

RNP APCH - GPS.

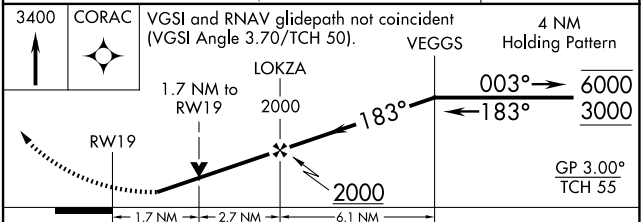
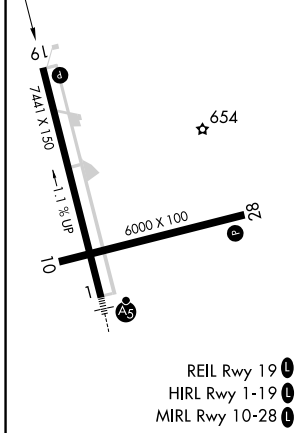
Rwy 19 helicopter visibility reduction below 3/4 SM NA. For uncompensated Baro-VNAV systems, LNAV/VNAV NA below -16°C or above 54°C. Circling Rwy 10 NA at night. When local altimeter setting not received, use HUL altimeter setting: increase LPV DA to 1019 feet and all visibilities 1/4 SM; increase LNAV/VNAV DA to 1205 feet and all visibilities 1/8 SM; increase all MDAs 100 feet and LNAV visibility Cats B, C, and D 1/2 SM, and Circling visibility Cats B and C 1/2 SM and Cat D 1/4 SM. Baro-VNAV and VDP NA when using HUL altimeter setting.

MISSED APPROACH: Climb to 3400 direct CORAC and hold.

AWOS-3PT 118.025	BOSTON CENTER 124.75 239.05	CLNC DEL 121.6	UNICOM 122.8 (CTAF)	122.6
----------------------------	---------------------------------------	--------------------------	-------------------------------	--------------



ELEV 534	D	TDZE 534
----------	----------	----------



CATEGORY	A	B	C	D
LPV DA	929-1 1/8		395 (400-1 1/8)	
LNAV/VNAV DA	1115-1 3/4		581 (600-1 3/4)	
LNAV MDA	1240-1 706 (800-1)		1240-2 706 (800-2)	
CIRCLING	1240-1 706 (800-1)		1320-2 1/4 786 (800-2 1/4) 1380-2 3/4 846 (900-2 3/4)	

NE-1, 14 MAY 2026 to 11 JUN 2026

NE-1, 14 MAY 2026 to 11 JUN 2026