

LOC/DME I-ARJ <b>109.3</b> Chan 30	APP CRS <b>227°</b>	Rwy Ldg <b>8700</b> TDZE <b>50</b> Apt Elev <b>54</b>
--	------------------------	---

# ILS RWY 23 (SA CAT I & II)

RHODE ISLAND TF GREEN INTL (PVD)

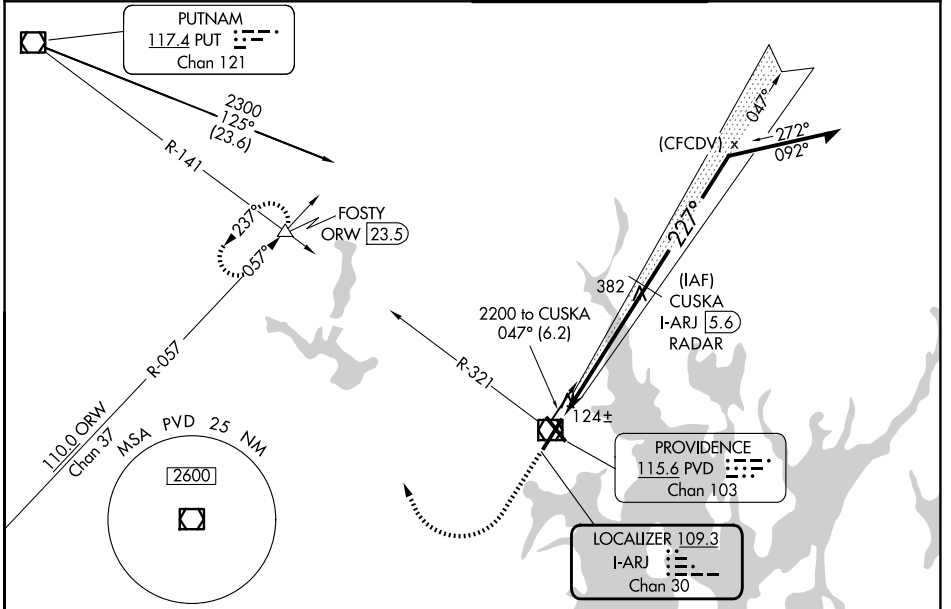
DME or RADAR required for procedure entry.

SA Cat I: Requires specific OPSPEC, MSPEC, or LOA approval and use of HUD to DH.  
SA CAT II: Reduced Lighting: Requires specific OPSPEC, MSPEC, or LOA approval and use of Autoland or HUD to touchdown.  
Procedure NA when tower closed.

MALSR  
AS

MISSED APPROACH: Climb to 700 then climbing right turn to 2500 on heading 350° and PVD VOR/DME R-321 to FOSTY INT/ ORW 23.5 DME and hold.

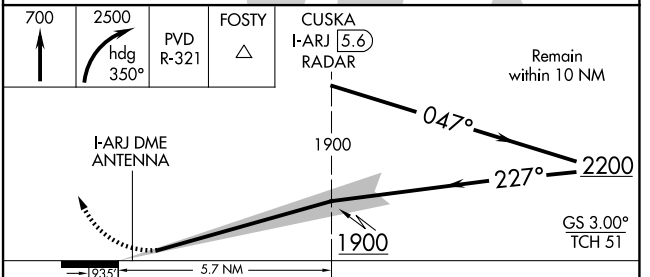
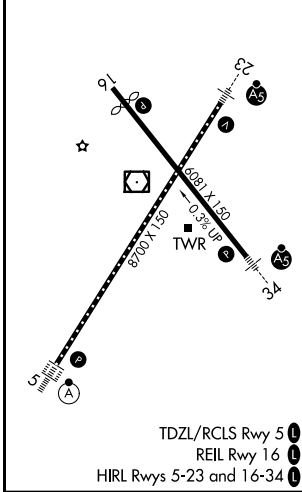
D-ATIS <b>124.2</b>	PROVIDENCE APP CON * <b>123.675 244.875</b>	PROVIDENCE TOWER * <b>120.7 (CTAF) 257.8</b>	GND CON <b>121.9 348.6</b>
------------------------	--	---	-------------------------------



NE-1, 14 MAY 2026 to 11 JUN 2026

NE-1, 14 MAY 2026 to 11 JUN 2026

ELEV 54	<b>D</b>	TDZE 50
---------	----------	---------



CATEGORY	A	B	C	D
S-ILS 23	SA CAT I	RA 163/14	150 DA 200	
S-ILS 23	SA CAT II	RA 103/12	100 DA 150	

## SA CATEGORY I & II ILS - SPECIAL AIRCREW & AIRCRAFT CERTIFICATION REQUIRED