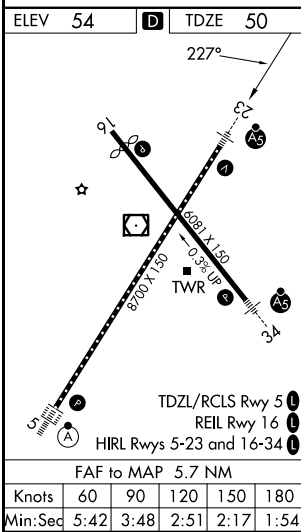
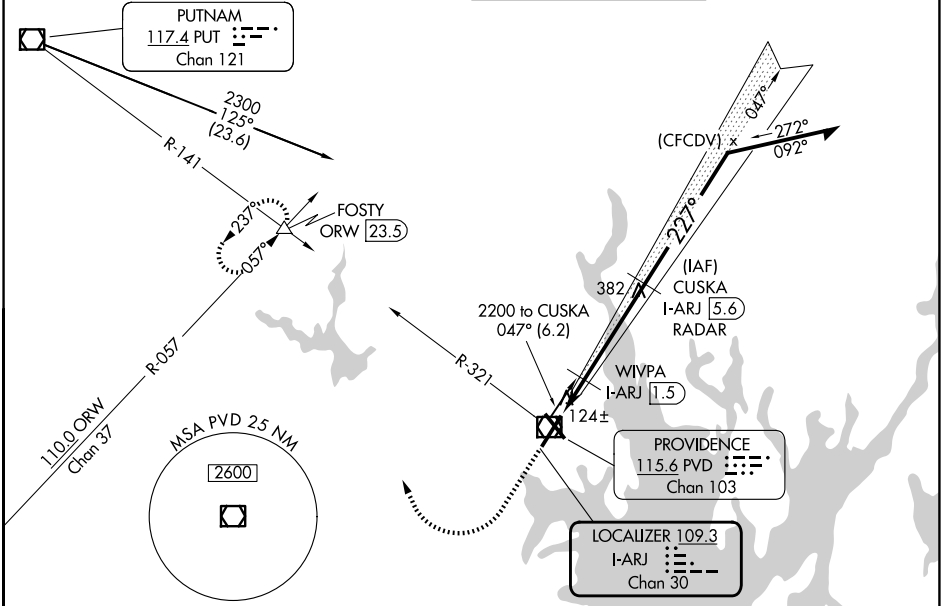


LOC/DME I-ARJ 109.3 Chan 30	APP CRS 227°	Rwy Ldg 8700 TDZE 50 Apt Elev 54
--	------------------------	---

ILS or LOC RWY 23

RHODE ISLAND TF GREEN INTL (PVD)

DME or RADAR required for procedure entry.		MALSR	MISSED APPROACH: Climb to 700 then climbing right turn to 2500 on heading 350° and PVD VOR/DME R-321 to FOSTY INT/ORW 23.5 DME and hold.
**RVR 1800 authorized with use of FD or AP or HUD to DA.			
D-ATIS 124.2	PROVIDENCE APP CON * 123.675 244.875	PROVIDENCE TOWER * 120.7 (CTAF) 0 257.8	GND CON 121.9 348.6



VGSI and ILS glidepath not coincident (VGSI Angle 3.00/TCH 41).

CUSKA I-ARJ 5.6 RADAR

WIVPA I-ARJ 1.5

I-ARJ 0.1, *I-ARJ 0.8

1900, 2200, 047°, 227°

GS 3.00° TCH 51

CATEGORY	A	B	C	D
S-ILS 23**	250/24 200 (200-½)			
S-LOC 23	600/24	550 (600-½)	600/60	550 (600-1¼)
CIRCLING	600-1 546 (600-1)	640-1 586 (600-1)	640-1½ 586 (600-1½)	860-2½ 806 (900-2½)
WIVPA FIX MINIMUMS				
S-LOC 23	380/24	330 (400-½)	380/26	330 (400-½)
CIRCLING	560-1 506 (600-1)	640-1 586 (600-1)	640-1½ 586 (600-1½)	860-2½ 806 (900-2½)

FAF to MAP 5.7 NM

Knots	60	90	120	150	180
Min:Sec	5:42	3:48	2:51	2:17	1:54

NE-1, 14 MAY 2026 to 11 JUN 2026

NE-1, 14 MAY 2026 to 11 JUN 2026