

LOC/DME I-PVD <b>109.3</b> Chan 30	APP CRS <b>047°</b>	Rwy Ldg <b>8700</b> TDZE <b>53</b> Apt Elev <b>54</b>
--	------------------------	---

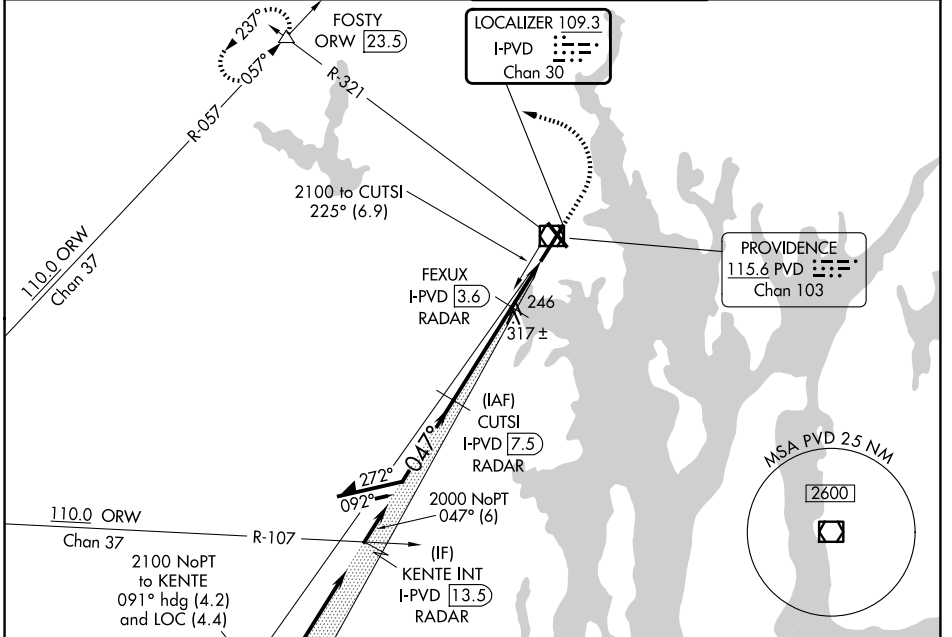
# ILS or LOC RWY 5

RHODE ISLAND TF GREEN INTL (PVD)

▼ When tower closed: increase S-ILS 5 all Cats and S-LOC 5 Cats A and B visibilities to ¾ SM, and S-LOC 5 Cats C and D visibility to 1 SM.  
 ▲ When control tower closed, for inop ALS, increase S-LOC 5 Cats C and D visibility to 1½ SM. RADAR or DME required for localizer minimums.

ALS-F-2 MISSED APPROACH: Climb to 800 then climbing left turn to 2500 on heading 270° and PVD VOR/DME R-321 to FOSTY INT/ORW 23.5 DME and hold.

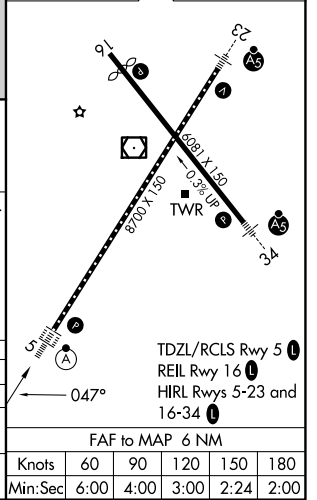
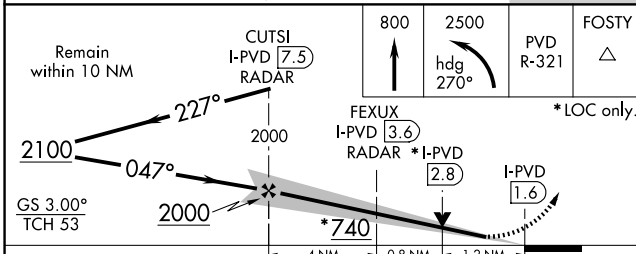
D-ATIS <b>124.2</b>	PROVIDENCE APP CON * <b>123.675 244.875</b>	PROVIDENCE TOWER * <b>120.7 (CTAF) 257.8</b>	GND CON <b>121.9 348.6</b>
------------------------	--	---	-------------------------------



NE-1, 14 MAY 2026 to 11 JUN 2026

NE-1, 14 MAY 2026 to 11 JUN 2026

ELEV 54	D	TDZE 53
---------	---	---------



CATEGORY	A	B	C	D
S-ILS 5	253/18		200 (200-½)	
S-LOC 5	500/24	447 (500-½)	500/45	447 (500-¾)
CIRCLING	560-1 506 (600-1)	640-1 586 (600-1)	640-1½ 586 (600-½)	860-2½ 806 (900-2½)