

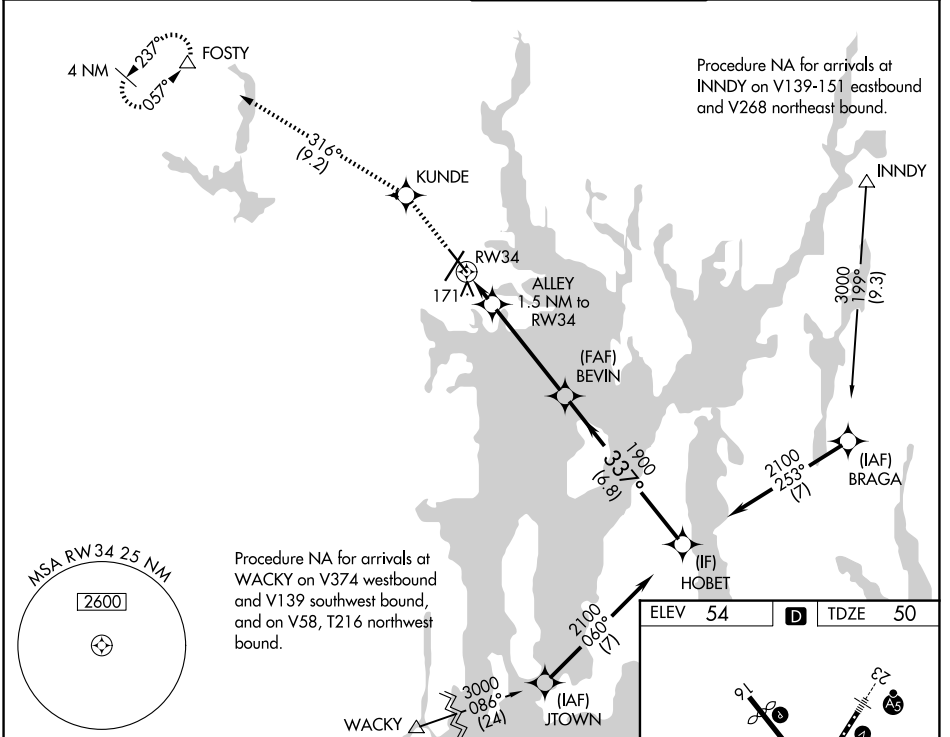
WAAS CH <b>58023</b> <b>W34A</b>	APP CRS <b>337°</b>	Rwy Ldg TDZE Apt Elev	<b>6081</b> <b>50</b> <b>54</b>
--	------------------------	-----------------------------	---------------------------------------

# RNAV (GPS) RWY 34

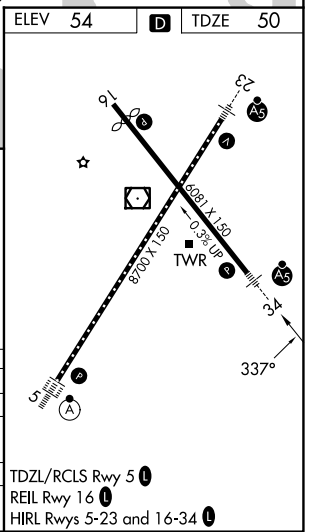
RHODE ISLAND TF GREEN INTL (PVD)

RNP APCH ▼ ▲ For uncompensated Baro-VNAV systems, LNAV/VNAV NA below -16°C or above 54°C. For inop MALS, increase LNAV/VNAV all Cats visibility to RVR 5000. For inop MALS, increase LNAV Cat A/B visibility to RVR 5500, and Cat C/D visibility to RVR 6000. Rwy 34 helicopter visibility reduction below RVR 4000 NA.	MALS AS	MISSED APPROACH: Climb to 2500 direct KUNDE and on track 316° to FOSTY and hold.
---	------------	---

D-ATIS <b>124.2</b>	PROVIDENCE APP CON * <b>123.675 244.875</b>	PROVIDENCE TOWER * <b>120.7 (CTAF) 0 257.8</b>	GND CON <b>121.9 348.6</b>
------------------------	--	---	-------------------------------



2500 ↑	KUNDE ◆	tr 316°	FOSTY △	VGSI and RNAV glidepath not coincident (VGSI Angle 3.00/TCH 60.)	HOBET
*LNAV only.	ALLEY 1.5 NM to RW34	1900	337°	2100	GP 3.00° TCH 53
RW34	1.5 NM	4.2 NM	6.8 NM		
CATEGORY	A	B	C	D	
LPV DA		330/40	280 (300-¾)		
LNAV/VNAV DA		349/40	299 (300-¾)		
LNAV MDA		440/40	390 (400-¾)		
CIRCLING	560-1 506 (600-1)	640-1 586 (600-1)	640-1½ 586 (600-1½)	860-2½ 806 (900-2½)	



NE-1, 14 MAY 2026 to 11 JUN 2026

NE-1, 14 MAY 2026 to 11 JUN 2026