

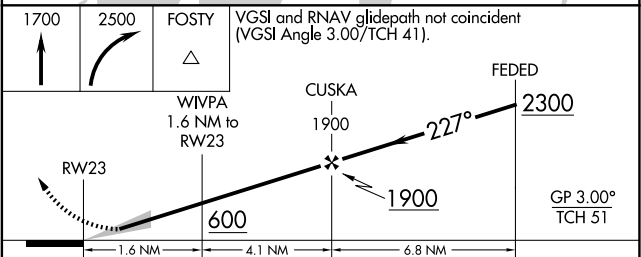
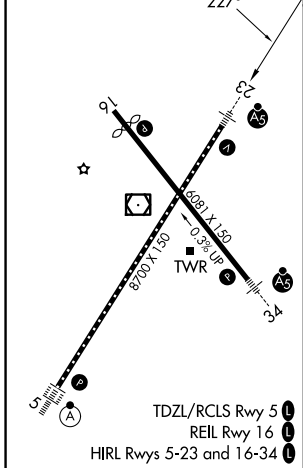
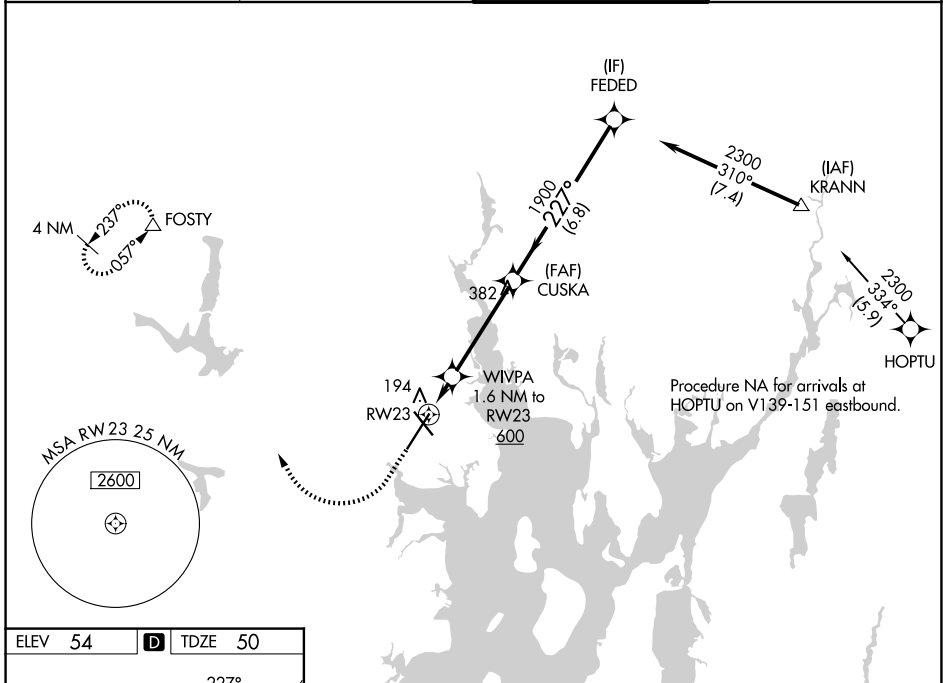
WAAS CH 93823 W23A	APP CRS 227°	Rwy Ldg TDZE Apt Elev	8700 50 54
--	------------------------	-----------------------------	---------------------------------------

RNAV (GPS) Y RWY 23

RHODE ISLAND TF GREEN INTL (PVD)

RNP APCH - GPS.	MALSR 	MISSED APPROACH: Climb to 1700 then climbing right turn to 2500 direct FOSTY and hold.
<p>▼ For uncompensated Baro-VNAV systems, LNAV/VNAV NA below -1.6°C or above 54°C. Inop ALS, increase LNAV Cats C/D visibility to RVR 6000. * RVR 1800 authorized with use of FD or AP or HUD to DA.</p>		

D-ATIS 124.2	PROVIDENCE APP CON * 123.675 244.875	PROVIDENCE TOWER * 120.7 (CTAF) 0 257.8	GND CON 121.9 348.6
------------------------	--	---	-------------------------------



CATEGORY	A	B	C	D
LPV DA *		250/24	200 (200-1/2)	
LNAV/VNAV DA		355/24	305 (400-1/2)	
LNAV MDA	460/24	410 (500-1/2)	460/40	410 (500-3/4)
CIRCLING	560-1 506 (600-1)	640-1 586 (600-1)	640-1 1/2 586 (600-1 1/2)	860-2 1/2 806 (900-2 1/2)

NE-1, 14 MAY 2026 to 11 JUN 2026

NE-1, 14 MAY 2026 to 11 JUN 2026