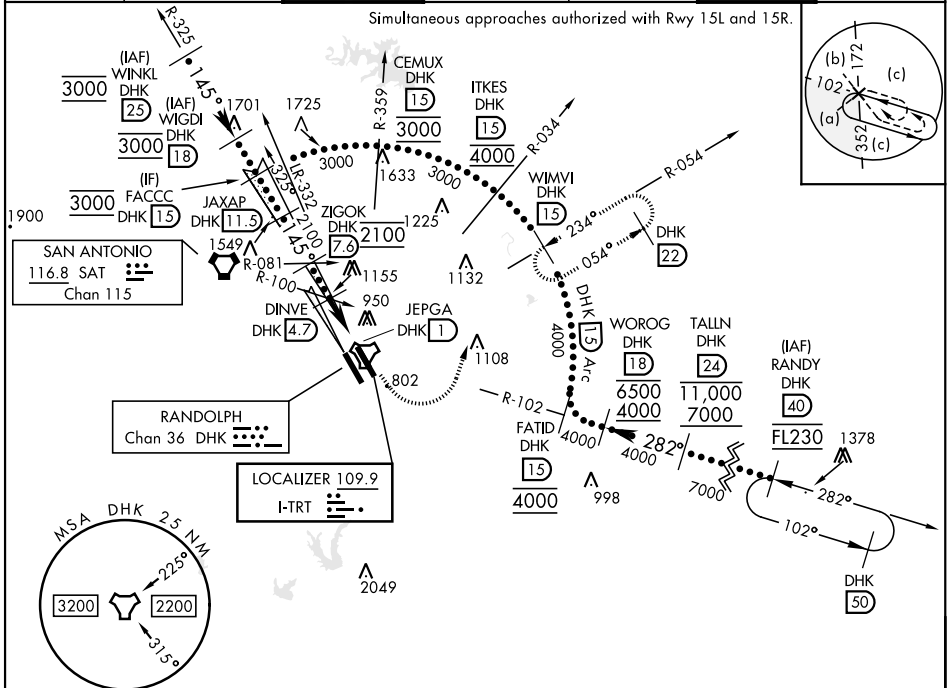


HI-ILS or LOC Z RWY 15L

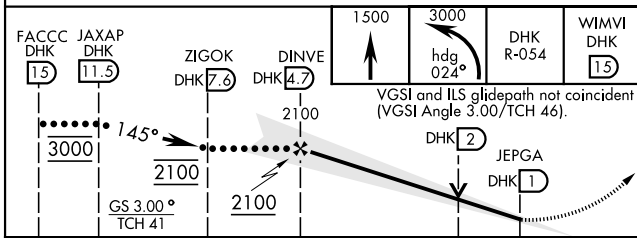
LOC I-TRT 109.9	APCH CRS 145°	Rwy ldg TDZE Arprt Elev 8351 742 761	[USAF]	RANDOLPH AFB (KRND)
---------------------------	-------------------------	--	--------	---------------------

RADAR or DME required		ALSIF-1 	MISSED APPROACH: Climb to 1500, then climbing left turn heading 024° to 3000, intercept DHK R-054 to WIMVI and hold.		
* When ALS inop, increase CAT CDE vis to 1 1/2 miles. ** Circling NA SW of Rwy 15L-33R.					

ATIS ★ 290.525	SAN ANTONIO APP CON 128.05 318.1	TOWER ★ 128.25 294.7	GND CON 119.65 275.8	HANGOVER ATIS ★ 327.8	HANGOVER TOWER ★ 120.5 291.1	HANGOVER GND CON 124.75 353.75
--------------------------	--	--------------------------------	--------------------------------	---------------------------------	--	--



EMERG SAFE ALT 100 NM 4100



ELEV 761	TDZE 742
HIRL all rwys ALS Rwy 15L nstd len 2100'	
FAF to MAP 3.7 NM	
Knots	120 140 160 180 200
Min:Sec	1:51 1:35 1:23 1:14 1:07

HI-ILS or LOC Z RWY 15L

SC-3, 14 MAY 2026 to 11 JUN 2026

SC-3, 14 MAY 2026 to 11 JUN 2026